

Spatial Data Infrastructure – Asia and the Pacific (SDI-AP) is a free electronic newsletter from the [Global Spatial Data Infrastructure Association \(GSDI\)](#). The newsletter is produced for people interested in Spatial Data Infrastructure, GIS, remote sensing, and geospatial data issues in Asia and the Pacific. It aims to raise awareness and provide useful information to strengthen SDI initiatives and support the synchronisation of activities across the region. Support for the newsletter is also provided by the [Permanent Committee on Geographic Information for Asia and the Pacific \(PCGIAP\)](#), a regional forum to enhance cooperation in the development of a regional geographic information infrastructure. The newsletter is currently being produced for GSDI by the [Centre for Spatial Data Infrastructures and Land Administration](#) at the University of Melbourne.



To [subscribe](#) to SDI-AP. Back issues of the newsletter are at the [GSDI website](#). You can also sign up for [GSDI News List](#) to receive alerts of special news and announcements as well as notification of new issues of the SDI-AP newsletter. To subscribe to, and access archives of, thematic or regional discussion lists [please visit](#).

Contents

Message from the editor	1
Contributions	2
SDI News, Links, Papers, Presentations	2
SDI Spotlight	3
GIS Tools, Software, Data	4
News from abroad	5
Articles	8
Books and Journals	8
Just for Fun !	10
Training Opportunities	11
Funding Opportunities, Awards, Grants	13
Employment Opportunities	14
Conferences, Events	15

Message from the editor

Welcome to the May edition of the newsletter.

This month the SDI spotlight is an overview of technology being developed to Integrate Spatial Mapping with Collaborative Virtual Environments. The article was prepared by Dr Christian Stock, Research Fellow at the University of Melbourne.

If you have news or information related to SDI, GIS, RS or spatial data that you would like to share with the community (e.g. workshop announcements, publications, reports, websites of interest etc.), [kindly send us the materials by the 25th of the each month](#) for your contribution to be included in the next newsletter.

Malcolm Park and Serryn Eagleson ([Editors](#)), at the [Centre for Spatial Data Infrastructures and Land Administration](#), The University of Melbourne.

Contributions

Thank you to the following people and organisations for their contributions to this issue: Paul Box, Kate Lance, and Baek Wonkug for news feeds, the staff of the Ministry of the Interior, Taiwan for the Chinese translation, and Shivani Lal, *GIS Development* and *Asia Surveying Mapping Magazine* for directly feeding into the newsletter.

[Back to contents](#)

SDI News, Links, Papers, Presentations

[Estimating the Value of Spatial Information to the New Zealand Economy](#)

Editors Note - The new Zealand government is commissioning a report estimating the value of spatial information to the New Zealand Economy. The report is intended to frame thinking on the government's role in spatial information. By describing how spatial information is used in different sectors of the economy, describing the value of spatial data to the economy, estimating the gains from removing barriers to spatial information and describing the value of greater use of spatial information to innovation and product markets.

Source: New Zealand Geospatial Office

[A prototype Development for the Forest Spatial Data Warehouse – A Case Study for Korea Forest Research](#)

This poster produced by KyoungMin Kim and CheolMin Kim at the Korea Forest Research Institute has three main objectives:

- To setup sharing infrastructure for the spatial data and field survey data about forests.
- To connect with the 3rd National GIS (NGIS) master plan of which the main issue is common spatial information infrastructure and;
- To boost up an effective quality control for spatial data by loading data filtered with standard into Forest Spatial Data Warehouse (FSDW).

Source: < <http://www.fire.uni-freiburg.de/GlobalNetworks/Northeast-Asia/Posters-PDF/%5BP2-12%5D.pdf> >

[The Evolution of Geospatial Technology Calls for Changes in Geospatial Research, Education and Government Management](#)

By [Prof. Mike Jackson, David Schell and Prof. D.R. Fraser Taylor](#)

Geospatial technology is advancing at a rapid across multiple domains of research, education and government. *"The authors believe that new research centers must be created and existing mathematics, computer science, geography and human factor departments must create new subspecialties or new programs to explore and invent new information systems focused on terrestrial features and phenomena, space, and time."*

Source: Directions Magazine (06.04.09)

[Australia - Update On Geophysical Data Releases](#)

The current status of Geoscience Australia's geophysical survey data acquisition is available in [a comprehensive table](#) from the Geoscience Australia website.

The Esperance, Balladonia and Cooper Basin North airborne magnetic and radiometric surveys were released via [Geophysical Archive Data Delivery Systems](#) on 26 March 2009.

For further information: [email](#); or phone +61 2 6249 9229.

[MapmyIndia's digital maps to help Indian voters](#)

MapmyIndia has launched a public service [Website](#) to help voters in India to make an informed choice during the forthcoming Lok Sabha elections. Combining its India maps with data on constituencies, like population, literacy ratio, area amongst others and information on parties, candidates and their track record, the Website places good amount of information and analysis for voters to refer to.

SOURCE: [IndiaPRwire](#) < > and [GIS Development Weekly](#)



[Back to contents](#)

[Geospatial is backbone for country's security](#)

After opening to a packed auditorium and beating all expectations at the exhibition, Map Malaysia witnessed two informative and enlightening seminars.

Geospatial information is the first step in a country's efforts in protecting its infrastructure, property and people. The seminar on Geointelligence discussed and deliberated how important it is for a country to use cutting-edge geospatial technologies for defence, emergency and security applications.

The second half of the seminar saw presentations of case studies and live examples of how various agencies are using geospatial technologies for security and defence. There was a case study to show how Hotspot mapping can prevent increase in urban crimes. Also how the public and civilian agencies can benefit from a tailored data specific to their mission. There was also a presentation, which touched upon how efficient monitoring of cargo using GPS technology can not only provide real time data but also provide cargo security. The seminar also discussed how prevalent geo products like Google Earth pose a threat to a nation's security.

Source: GIS News

[Back to contents](#)

SDI Spotlight

This month the SDI spotlight is from [Dr Christian Stock](#), Research Fellow at the University of Melbourne

[Integrating Spatial Mapping with Collaborative Virtual Environments](#)

The Cooperative Research Centre for Spatial Information together with the University of Melbourne has built a software platform called SIEVE (Spatial Information Exploration & Visualisation Environment) which allows users to explore virtual environments in a collaborative 3D space (similar to Second Life) based on spatial mapping data. Together with our partners the Victorian Departments of Primary Industries (DPI) and Sustainability and Environments (DSE), local Victorian Catchment Management Authorities (CMAs) and the University of New England (UNE), we are exploring SIEVE as a rural and peri-urban environment planning tool. Together with the Defence Science and Technology (DSTO) and Defence Imagery and Geospatial Organisations (DIGO), we are using SIEVE in security and emergency scenarios.

SIEVE is using multiple components including SIEVE Builder Local, SIEVE Builder Net, SIEVE Viewer and SIEVE Direct. SIEVE Builder Local is a plug-in for ESRI ArcMap written in Visual Basic and takes a DTM, aerial image and spatial mapping data to automatically build a 3D environment including a realistic vegetation distribution and man-made objects. SIEVE Builder Net gives users access to the same functionality via a web mapping interface built using ESRI ArcServer. SIEVE Builder allows users to build a geotypical rural environment anywhere in Australia within minutes. SIEVE Builder Net allows users to download such environments over the Internet from a web server.

DSE is currently installing a SIEVE Builder Net installation for trial. SIEVE Builder also has an interface to eFarmer (a software used by CMAs and DPI), which allows farmers to manage their land via a web interface. With SIEVE Builder farmers can view their existing land and future plans in an immersive 3D environment.

SIEVE Viewer is built on Garagegames' Torque Game Engine and allows users to interactively and collaboratively explore 3D environments in real-time. Users can view existing scenarios and compare them to predicted futures. We have collaborated with DPI to develop climate change scenarios in the rural Hamilton area. These scenarios are built on precipitation and temperature predictions in the year 2050 and compare alternative management and land use regimes.

SIEVE Viewer allows users to not only see surface data, but also look underground to view ground water tables matching existing surface growth. Users can also view 2D graphs, in the case of our climate change work these were land suitability graphs. In our work with UNE in the field of precision agriculture, we can also show scientific surface data such as EM-38 (electromagnetic inductivity) data and how it relates to productivity. SIEVE Viewer also allows us to display iconic representations of land use, for example milk bottles at different densities to display different productivity levels of dairy cattle.

[Back to contents](#)

SIEVE Direct allows users to link the GIS directly with the 3D environment (namely ArcGIS with SIEVE Viewer). This allows tracking of users in the 3D space on the 2D GIS. We can furthermore edit objects in the 3D and simultaneously update the GIS database, or make changes to the 2D GIS and see those changes live in the 3D. We can also animate the 3D from the GIS, for example to show progressive changes in the vegetation and connected changes in the ground water tables.

SIEVE Viewer can be used collaboratively, which means that multiple users can join the same virtual space via the Internet. This could, for example, be used as an advisory system where land managers can meet scientists and policy makers to discuss issues at hand and visually explore alternatives. One recent addition to our system is the functionality to exchange images via the Internet connection. One person can upload a georeferenced photograph (this could be showing soil erosion) to a server and other users can see it in the 3D environment at the location the photo was taken.

We are currently working on integrating mashup technologies into our SIEVE framework. This will allow us to integrate live data feeds from the Internet into SIEVE where we can visualise this data. This could be live weather, time of day and current vehicle traffic. This will be especially useful in security applications where current data like traffic conditions can be vital to make good decisions.

To view SIEVE in action, you can view 2 videos on youtube: <http://www.youtube.com/watch?v=Pm4Yg5Cv64> & <http://www.youtube.com/watch?v=xilKWYubI58>

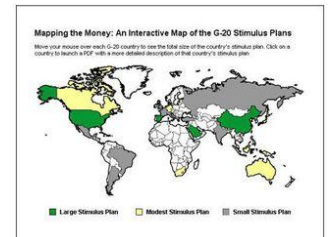
The editors are actively soliciting contributions to the monthly “SDI Spotlight” feature for the June and subsequent issues.

GIS Tools, Software, Data

[Understanding the G-20 Economic Stimulus Plans](#)

Editor's Note: Almost all of the G-20 countries have announced some type of fiscal stimulus plan to get their economies back on track the distribution of the plans are illustrated using an interactive mapping

Source: Brookings



[Local early quake warning system created](#)

A researcher in Taiwan has successfully developed a [computer software system](#) and a low-cost palm-sized device that could give an early warning of up to 30 seconds before a major earthquake strikes. Prof. Wu Yih-min at National Taiwan University's Department of Geosciences has dedicated more than 10 years to developing the system, which has aroused keen interest in many nations.

Source: Asia Daily News Online (13.04.09)

[Malaria Atlas Project](#)

Spatial medical intelligence is central to the effective planning of malaria control. Forty years have passed since the cartography of malaria worldwide was taken seriously. The Malaria Atlas Project (MAP) was founded in 2005 to fill this niche for the malaria control community at a global scale.

The [MAP team](#) have assembled a unique spatial database of linked information based on medical intelligence and satellite-derived climate data to constrain the limits of malaria transmission and the largest ever archive of community-based estimates of parasite prevalence. To-date we have collated 14,710 parasite rate surveys (*P.f.* 14,393; *P.v.* 4618) from an aggregated sample of 2,979,627 slides in 84 countries. These data have been assembled and analysed by a group of geographers, statisticians, epidemiologists, biologists and public health specialists.

Source: <http://www.map.ox.ac.uk/>



[Climate Change Vulnerability Mapping for Southeast Asia \(January 2009\)](#)

This paper provides information on the sub-national areas (regions/districts/provinces) most vulnerable to climate change impacts in Southeast Asia. This assessment was carried out by overlaying climate hazard maps, sensitivity maps, and adaptive capacity maps following the vulnerability assessment framework of the United Nations **Inter-governmental Panel on Climate Change (IPCC)**. The study used data on the spatial

[Back to contents](#)

distribution of various climate-related hazards in 530 sub-national areas of Indonesia, Thailand, Vietnam, Lao PDR, Cambodia, Malaysia, and the Philippines. Based on this mapping assessment, all the regions of the Philippines; the Mekong River Delta in Vietnam; almost all the regions of Cambodia; North and East Lao PDR; the Bangkok region of Thailand; and West Sumatra, South Sumatra, West Java, and East Java of Indonesia are among the most vulnerable regions in Southeast Asia.

Source: thanks to KL.

[Observing Crustal Movement in China](#)

Trimble has been selected by the China Earthquake Administration to supply GNSS continuous operating reference station receivers for a project to build a crustal movement observation network in China. The formation of the network comes after the Sichuan Earthquake reminded Chinese authorities of the dangers presented by crustal movement.

Source: *Asian Surveying & Mapping*

[The Map World Forum 2009 proceedings are now available](#)

[Chinese Satellites Begin Disaster Monitoring](#)

China's first two satellites dedicated to environment and disaster monitoring began official operations on 30 March, according to Chinese state media.

Source: Asian Surveying & Mapping and [ChinaView News](#).

[ExpressMaps for Emergency Response](#)

Spot Image and Infoterra are launching an online service to deliver detailed basemaps covering 75 per cent of the Earth's land surfaces. This service creates basemaps at a scale of 1:50 000, which can be delivered electronically to users within 6 hours. It is aimed at first responders in crisis management situations.

Source: Asian Surveying & Mapping

[CDC develops Disease Control GIS](#)

Center for Disease Control (CDC), Taiwan has developed a GIS system to monitor and control diseases and offer information to all medical organisations and the public.

Source: [PRLog.org](#) and [GIS News](#)

[Japan Plans As Many As 100 Mini-Satellites](#)

Part of Japan's \$150 billion stimulus plan calls for a new domestic industry for small satellites. A science ministry spokesperson indicates that the smaller satellites (each 50 cm long and weighing 50 kg) can be deployed quickly and cheaply for such tasks as monitoring natural disasters and traffic jams. Japan plans to build 50 to 100 satellites for \$3 million to \$4 million each to be launched into a low-Earth orbit by an inexpensive Russian rocket.

Source: V1 Magazine & [U.S. News and World Report](#)

[Green Map project to survey lakes, dams in Jakarta](#)

Volunteers from the Jakarta Green Map project are planning to map lakes and dams in Jakarta and surrounding areas and record their conditions in the wake of the Situ Gintung disaster last month when the man-made earthen wall of the reservoir in Tangerang burst last month, sending a deadly torrent of muddy water to nearby villages. More than 90 people were killed and hundreds of homes destroyed.

Source: [Jakarta Post](#) and GIS Development Weekly

[Back to contents](#)

News from abroad

"This section has been included to highlight some of the developments happening outside the region which demonstrate SDI in action."

[Satellite data depict effects of climate change in Antarctica](#)

Antarctica's glaciers are melting more rapidly than previously known because of climate change, according to a new U.S. Geological Survey report prepared in close collaboration with the British Antarctic Survey. The report is based on the historical and recent satellite imagery, aerial photography and other data, as well as the newest

[Back to contents](#)

mapping techniques. The study has released maps of recent glacier retreat along Antarctica's Larsen and Wordie Ice Shelves.

Source : US Geological Survey and [GIS News](#)

[Snow maps from space aid reindeer herders](#)

Arctic reindeer herders in northern Scandinavia are getting a view from space to help them look after their herds as the region copes with climate change. Using satellite-based snow melt maps supplied by the European Space Agency (ESA) backed program Polar View, herders are able to view the depth of snow and judge where the best foraging spots are to take their reindeer

Source: [CNN](#) and GIS News (*who provided the headline !*)

[Aerial photograph archives resolve land ownership disputes](#)

Aerial survey firm Bluesky has launched a new Web service designed to help resolve boundary, rights of way, and other land related disputes in Britain. Visitors to < www.oldaerialphotos.com > can now identify and acquire photographic evidence from the past to support their claim and in addition to the historical aerial photomaps a range of professional services are also available including Letters of Authenticity, Statutory Declaration and even appearance in court by a professional photographic interpreter. With prices starting from £20 the Old Aerial Photos Legal Service can save time and money, even helping to resolve disputes before they escalate.

Visitors can search through the millions of aerial images dating back as far as the 1917 by simply entering a postcode, address or grid reference. Detailed search results, including the age and ground coverage, of every image that matches the search criteria are displayed and the visitor can choose to purchase either a hard copy print or digital image file.

Images that are available for sale on the Website include some of the earliest commercial aerial survey images, military photography from World War II and many national archives, including oblique aerial photographs.

Source : [Assoc for Geo Information](#) and [GIS News](#)

[Russia Keeps Eye On Arctic](#)

Russia recently announced it was watching the extent of militarization in the Arctic as global warming makes potentially valuable resources in the polar region more accessible and would plan its strategy accordingly. Russia has already staked its claim to a majority of the Arctic waters, which it shares with four NATO countries, and planted a Russian flag on the seabed under the North Pole 18 months ago to reinforce its position.

Source: St Petersburg Times & [V1 Newsletter](#).

hear also the BBC radio *Discovery* programme, "[Oceans: what lies beneath?](#)" [episode 3](#) where the mineral and biomedical riches available for utilization are discussed.

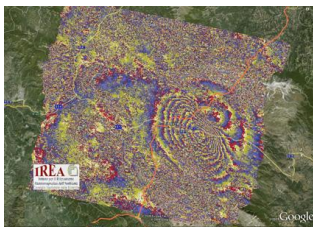
[High-Tech Kayak Used to Map Tennessee River](#)

Researchers at the University of Tennessee have equipped a kayak with video cameras both above and below water, a GPS receiver, a sonar depth finder and underwater laser to map the Big South Fork National River and the Obed Wild and Scenic River for the National Park Service.

Data collected from the high-tech kayak will be imported into a geographic information system (GIS) for study and map making. The purpose of the project is to identify habitat for endangered freshwater muscels and endangered fish. The project will cover 77 miles of the Big South Fork River and 470 miles of tributaries.

You can read more on this project, and view a short video, on [this coverage](#) from Knox News.

Source: V1 Media and KnoxNews to [view video](#).



[Satellites Document Earth Movement During Italy Quake](#)

The [European Space Agency](#) just released details about how the Envisat Advanced Synthetic Aperture Radar (ASAR) instrument was able to document the movement of the earth over the L'Aquila area of central Italy during this month's seismic events. The interferogram above shows the deformation pattern, with each fringe equivalent to surface displacement of 2.8 cm.

Source: V1 Media

[Largest disease association database ever](#)

USA: A team of researchers from Northeastern University and Harvard University has created a map summarising disease associations expressed in a population of more than 30 million people. Using a database of insurance claims, the researchers have created the largest disease network database ever built.

[Back to contents](#)

Source: Newswise Science News and [GIS Development Weekly](#)

Washington police's mapping system protects public K-12 schools

The Washington Association of Sheriffs and Police Chiefs (WASPC) announced that the statewide Critical Incident Planning and Mapping System (CIPMS) is now protecting nearly 2,000 public K-12 schools in the State of Washington. The CIPMS is also protecting 18 of the state's 35 community colleges. The statewide system provides police, fire, school officials and other first responders with secure and instant access to critical campus information including site and floor plans, aerial and geospatial (GIS) imagery, hazardous material locations, emergency response plans, digital images both inside and outside the school, and evacuation routes via a computer.

Source: [PR Newswire](#) and [GIS Development Weekly](#)

[GIS Used to Link Pesticides to Parkinson's Risk](#)

A report ([abstract](#), article requires subscription) in the April 15 issue of the *American Journal of Epidemiology* by Beate Ritz, professor of epidemiology at the UCLA School of Public Health, and Sadie Costello, a former doctoral student at UCLA who is now at the University of California, Berkeley, found that Central Valley California residents who lived within 500 meters of fields sprayed between 1974 and 1999 had a 75-percent increased risk for Parkinson's Disease.

The pair, with input from other researchers, developed a GIS model to estimate human exposure to pesticides that used land-use maps and state pesticide-use reporting data.

Source: Directions Magazine blog

[From Directions Magazine blog "GIS in the News"](#)

Two young geographers from the University of St. Thomas are helping an Edina, MN resident trace property confiscated from his family by the Nazis using GIS. [Minneapolis Star Tribune](#)

Two Georgia Southern University geographers, Brian Bossak and Mark Welford, are using GIS to map data about the Black Death and perhaps show that it was not caused by bubonic plague, but instead was a virus spread by person-to-person contact along trade routes used mainly in warm weather. [Augusta Chronicle](#)

[Swine 'flu Pandemic preparedness](#)

How quickly can our governments respond to the Swine Flu if it does become a pandemic? How quickly do they need to respond?

Source: V1 Media blog

[Swine Flu: Map it and track it with Google Maps mashups](#)

[NAVTEQ reveals results of a research study on environmental impact](#)

In a three pronged study which evaluated drivers without a navigation system, drivers with a navigation system, and drivers with a navigation system that included traffic, the results revealed that drivers using navigation devices 1) drove shorter distances and 2) spent less time driving. Conducted in two metropolitan areas of Germany – Dusseldorf and Munich – the study also showed that drivers with navigation devices had a 12% increase in fuel efficiency, as measured by liters of fuel consumed per 100 kms. Fuel consumption among those drivers using navigation fell from 8.3 to 7.3 l/100kms.

This increase in fuel economy translates to an estimated .91 tons (metric) decrease in carbon dioxide emissions every year per driver, or a 24% decrease over the amount that the average non-navigation user emits per year.

Source: GIS News & [Navtec press release](#).

[NOAA brings Great Lakes to Google Earth](#)

NOAA (National Oceanic & Atmospheric Administration) is helping Americans peer beneath the surfaces of the five Great Lakes by providing Google Earth with data that now includes detailed three-dimensional mapping of Lakes Huron, Ontario, Erie, Superior and Michigan.

"NOAA's data opens up the fascinating world underneath the planet's largest fresh water system," said Richard W. Spinrad, NOAA assistant administrator for oceanic and atmospheric research and a member of Google's Ocean Advisory Council. "As an oceanographer, I find this an exciting use of scientific data to serve society."

Source: GIS News and [NOAA News](#)

[Back to contents](#)

[LiDAR data reveals historic landslides](#)

The Oregon Department of Geology and Mineral Industries (DOGAMI) has released two maps showing historic and pre-historic landslides in the West Bull Mountain area of Washington County and the northwest portion of Oregon City in Clackamas County.

Using LiDAR, DOGAMI geologists are working with local governments across Oregon to create a new generation of landslide inventory maps that are more accurate and comprehensive than any in the past.

Source: [Salem-News.com](#) & GIS News

[Back to contents](#)

Articles

Editorial by Dr. Hrishikesh Samant < hrishikesh@gisdevelopment.net > questions the need to “censor” maps and suggests that such censoring may draw attention to sensitive terrorism targets

Source: GIS Development

[The Elephant is Ready to Race: Geospatial Data Initiatives and Perspectives from India - Part 1](#)

by Murali Krishna Gurram, Nooka Ratnam Kinthada and Gilbert H. Castle

India encompasses one-third of the world's population, has a ubiquitous cultural commitment to education and achievement, and is on the cusp of being an economic superpower. This article summarizes the remarkable growth of India's geospatial technology industry with respect to its economic growth, in two parts. This first part addresses the background and history of geospatial information in India, and includes a look at existing map policies and constraints.

[The Elephant is Ready to Race: Geospatial Data Initiatives and Perspectives from India - Part 2](#)

Part II - Evolutionary changes, and conclusions.

Source: Directions Magazine

[InfoCode publishes paper on GIS in emergency](#)

USA: InfoCode Corporation, a provider of GIS data, announced the release of a new report entitled “Top 3 Considerations for GIS in Emergency Notification.” The paper provides practical ideas for implementing notification-oriented GIS based on the company's years of experience. The content is geared toward emergency notification system managers of all backgrounds and experience levels.

Source: [InfoCode Press release](#) and [GIS Development Weekly](#)

New Zealand prefers federated information to SDI interview of Sharon Cottrel, General Manager, Customer Services, Land Information New Zealand

SOURCE: [GIS Development Weekly](#)

[SDI Developments in the World's Currently Existing Mega Cities \(April 2009\)](#)

Ms. Silke BOOS and Prof. Hartmut MUELLER, Germany - FIG Commission 3 Working Group WG3.2 Spatial Data Infrastructures in Mega Cities.

The objective of this paper is to discuss the results of an internet search concerning the use of Spatial Information Technology in the world's currently existing mega cities. The search starts from a nationwide view on the execution and the progression status of SDIs in the home countries of mega cities and zooms in to the specific aspects of spatial data management in the metropolitan areas of special interest. As a result, the authors come to the conclusion that current SDI development in mega cities covers the whole range from first stage conceptual ideas up to an almost complete operational SDI availability.

< http://www.fig.net/pub/monthly_articles/april_2009/april_2009_boos_mueller.html >

[Back to contents](#)

Books and Journals

[Open Geospatial Consortium News](#)

To subscribe [send mail](#) with "subscribe" (no quotes) in the subject

[Back to contents](#)

[Next Generation Geospatial Information: From Digital Image Analysis to SpatioTemporal Databases](#)

With a growing ability to collect and store geospatial information leading to increasing amounts of heterogeneous geospatial data, Next Generation Geospatial Information confronts these new challenges through a collection of contributions from leading experts. This book addresses the distributed nature of currently available spatial data infrastructure. It discusses image-based geospatial information management and modeling, covering such topics as semi-automated feature extraction. It presents indexing techniques and query processing methods including indexing for location-based services. This text also explores the role of ontology and semantics in geospatial data processing. From Taylor & Francis, 2009. (Kindle edition also available.)

[Submissions open for The Cartography Design Annual #2](#)

Following the success of the first Cartography Design Annual, submissions are now being accepted for the second edition of the book. The Cartography Design Annual is a collection of maps from some of the top cartographers in the world which clearly shows that the craft of cartography is very much alive and well.



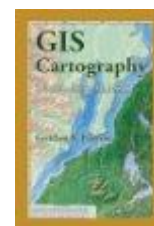
Compiled and edited by Nick Springer, the Cartography Design Annual #2 will collect a select group of maps published in the calendar year 2008. The book, published in full-color with an overview and detail view of each map, is beautiful as well as informative. **To submit a map for consideration in Annual #2, or**

to purchase a copy of Annual #1, [visit](#). For additional information [email](#).

Source: Springer press release

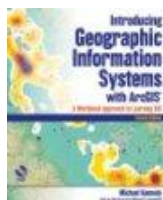
[GIS Cartography: A Guide to Effective Map Design](#)

Maps, either printed or digital, can create effective communication with bosses, clients, other scientists, and the public. However, entry level GISers often find that map design was given short shrift in their pre-professional life. It is time for the GIS field, which is maturing in other ways, to improve its skills in this area. Based on the author's more than 10 years of research and practice in map design, *GIS Cartography: A Guide to Effective Map Design* provides the tools to create truly sophisticated maps. From CRC, 2009.



[Introducing Geographic Information Systems with ArcGIS: A Workbook Approach to Learning GIS, Second Edition](#)

Introducing Geographic Information Systems with ArcGIS, Second Edition serves as both an easy-to-understand introduction to GIS and a hands-on manual for the ArcGIS 9.3 software. This combination theory-workbook approach is designed to quickly bring the reader from GIS neophyte to well-informed GIS user from both a general knowledge and practical viewpoint. Replacing the traditional separate texts on theory and application, the book integrates a broad introduction to GIS with a software-specific workbook for ESRI's ArcGIS in a single comprehensive volume. Easy to read, interesting, and at times quite amusing, the new edition is even more accessible to a wide variety of readers. From Wiley, 2009.



The Global Spatial Data Infrastructure Association (GSDI) has published [the GSDI Cookbook](#) in a wiki environment and would like to invite contributions to this resource from a broad community of geographic data providers and users. The GSDI Cookbook wiki provides the necessary background information to evaluate and implement existing components of SDI. The GSDI Cookbook includes topics on data development, visualization, discovery, standards, legal and economic issues, community building, and case studies. In light of the rapidly evolving technological environment that SDI operates within, we would especially encourage contributions and updates to the GSDI Cookbook in the areas of service interoperability, data discovery, and data visualization.

The Cookbook wiki may be accessed at: < <http://gsdidocs.org/GSDIWiki/> >

[Handbook on Geospatial Infrastructure in Support of Census Activities](#)

The recently published *Handbook on Geospatial Infrastructure in Support of Census Activities* takes into account technological developments in the geographic information area. An official copy of the Handbook is available on-line and set to be published in print form soon. Technological developments in the geographic information area have been reflected in the recently adopted United Nations Principles and Recommendations for Population and Housing Censuses, Revision 2, and puts into the hands of census planners and related personnel this technical guide on the contemporary methods, tools, and best practices that can support census mapping operations more efficiently.

[Back to contents](#)

< http://unstats.un.org/unsd/demographic/sources/census/2010_PHC/Publications/Series_F103_more.htm >

[Back to contents](#)

Just for Fun !

[Highest crime rate in L.A.? No, just an LAPD map glitch](#)

The department's online map incorrectly showed many crimes downtown -- near City Hall and the police station -- when its 'geocoding' software couldn't interpret the true address.

Since the inception of the LAPD's online crime map three years ago, the 200 block of West 1st Street has consistently shown up as the most likely place in Los Angeles to be victimized by crime.

But don't believe everything you read on the Internet. The spot, directly in front of the Los Angeles Times and a block from the new LAPD headquarters, is actually quite lawful.

Behind the apparent enigma is a case of virtual unreality. The crimes reported there were real, but they actually happened somewhere else. The only thing they had in common was an address that proved impossible for a computer to find.

The distortion -- which the LAPD was not aware of until alerted by The Times -- illustrates pitfalls in the growing number of products that depend on a computer process known as geocoding to convert written addresses into points on electronic maps.

In this instance, <http://www.lapdcrimemaps.org> is offered to the public as a way to track crimes near specific addresses in the city of Los Angeles. Most of the time that process worked fine. But when it failed, crimes were often shown miles from where they actually occurred.

Unable to parse the intersection of Paloma Street and Adams Boulevard, for instance, the computer used a default point for Los Angeles, roughly 1st and Spring streets.

Mistakes could have the effect of masking real crime spikes as well as creating false ones.

Source: LA Times

[The Geography of "BUZZ"](#)

Apologies to residents of the Lower East Side; Williamsburg, Brooklyn; and other hipster-centric neighborhoods. You are not as cool as you think, at least according to a new study that seeks to measure what it calls "the geography of buzz."

The research, presented in late March at the annual meeting of the Association of American Geographers, locates hot spots based on the frequency and draw of cultural happenings: film and television screenings, concerts, fashion shows, gallery and theater openings.

Source: NY Times

See also [GIS Development Weekly "Image of the Week"](#) (April 20) taken from the [NY Times](#).

[New Scientist World Maps](#) – Some interesting maps

This feature is presented as an online gallery, with 10 separate images that take you through the analysis and visualization of different map-based views.

- Want to see where the most remote location is?
- Want to see a beautiful image of the world's busiest shipping lanes?

This features illustrates how effective a slideshow can be to display map analysis. This one starts from the finished product and reveals different layers and data sources to deconstruct the final map outcome.

Thanks to our Source: [V1 Media blog](#)

[Four corners mapping mistake boosts tourism](#)

A mapping mistake is creating a big boost in tourism at the Four Corners National Monument (USA). Last week, officials with the National Geodetic Survey announced there was a slight miscalculation in where the four corners meet.

Park officials believe the mapping mistake will not deter tourists who photograph each other sprawled across four states. In fact, park manager DeWayne Johnson says tourism has increased since recent media coverage exposed the surveying error.

The National Geodetic Survey says the four corners marker is 1,807 feet east of where it should be placed.

Park officials say the marker's current location for the intersection of Arizona, Colorado, New Mexico and Utah is now accepted.

Comment by Nicholas S, on 4/29/2009

[Back to contents](#)

The monument has no error. Just a bunch of bad assumptions leading to misreporting. The monument has always been accepted it's in the correct place and always has been. There was no miscalculation no matter what the NGS says. And who are they to comment on boundary lines anyway. Thank god clowns with GPS units reading GIS maps don't get to locate boundary lines.

Source: [Kold Channel 13 News](#) & GIS News

[Back to contents](#)

Training Opportunities

[Pre-Conference WORKSHOPS at the 2nd International Conference on Earth Observation for Global Changes \(EOGC2009\)](#) 25-29 May 2009, Chengdu, China

Pre-Conference workshops include:

W1: Satellite Observation of Biomass Burning

W2: Remote Sensing of the Coastal Ecosystems

W3: Land-cover Classification using High-resolution Satellite Images

[Fourth International Workshop on "Geographical Analysis, Urban Modeling, Spatial Statistics" \(GEOG-AN-MOD 09\)](#)

<http://www.lisut.org/workshop/GEOG-AN-MOD09/> in conjunction with

[The 2009 International Conference on Computational Science and its Applications \(ICCSA 2009\)](#)

"NEW" June 29th to July 2rd, 2009

Kyung Hee University-Global Campus, Yongin (Korea)

Important dates

June 29 - July 2, 2009: ICCSA 2009 Conference.

[Association of American Geographers offers membership at reduced rate for eligible professionals](#)

Geographers and others whose work involves Spatial Data Infrastructure, GIS, remote sensing, and geospatial data issues in Asia and the Pacific may be eligible to join the Association of American Geographers (AAG) for \$20 per year. This new reduced dues rate is open to professionals who earn less than US\$25,000 per year and are both citizens of and residents in certain countries throughout Asia and the Pacific. [A full list of these countries is available.](#)

The AAG developing regions membership category offers all regular AAG member benefits, with the exception that publications are provided only in digital format.

For more [information on this membership program](#), or [contact Matthew Hamilton](#).

For more information on the [Association of American Geographers](#).

[Advanced Training in Remote Sensing & GIS](#)

Inter-Islamic Networks on Space Sciences and Technology (ISNET) is an inter-state, non political and non profit making agency. It is an independent, autonomous and self governing institution under the umbrella of the OIC (Organisation of Islamic Conference) Standing Committee on Scientific and Technological Cooperation (COMSTECH). SUPARCO is the host organisation of ISNET.

Institute: National Center for Remote Sensing and Geo-Informatics (NCRG), Karachi, Pakistan

[Application deadline & Form](#): 1 June 2009

Starting Date: 13 July 2009 (2 weeks)

The course aims at providing knowledge and skills in state-of-the-art remote sensing technologies and their applications. It will also focus on concepts of digital image processing techniques, development of image processing algorithms to achieve various image processing tasks. It will also attempt to explore functionalities of various off-the-shelf commercial systems and their comparison. Hands-on training will be imparted to develop practical skills in image processing. The course will touch upon latest developments in remote sensing both in space and ground segments.

ISNET will sponsor participants on the basis of evaluation of the course organising committee and also consider the criteria of first come first served basis. Usually only 4-5 participants can be accommodated in each Course.

Sponsorship for workshop will depend on the availability of sponsorship funds for that particular workshop.

Thanks to Kate Lance for bringing this to our attention.

[Back to contents](#)

WMO/RCUWM/UNW-DPC Training Workshop on Integrated Flood Management

The Training Workshop on Integrated Flood Management (IFM), to be held on 11-14 May 2009 in Tehran, Iran, is being developed by the World Meteorological Organization in cooperation with the Regional Centre on Urban Water Management-Tehran and UN-Water Decade Programme on Capacity Development (UNW-DPC) for flood-prone countries, cities, and communities, with the aim of scaling-up action on integrated flood management to contribute to a minimization of losses of life from flooding and to an efficient use of flood plain resources. The course will provide participants an in depth exposure to the social, economic, environmental and institutional dimensions of flood management and allow them to develop an integrated perspective on floods, floodplains and the development process in their own country.

This three-day workshop has been designed for top and mid-level managers/professionals in water resources management, disaster management, land use management and spatial planning, from several countries in Western Asia and Arab region including Iran, Iraq, Pakistan, Afghanistan, India, Bangladesh, Oman, Tajikistan, Kyrgyzstan and Yemen.

[Contact](#) or [visit](#) for further information.

Thanks to Kate Lance for bringing this to our attention.

United Nations University – ITC - School for Disaster Geo-information Management Capacity Building for Disaster Geo-Information Management



Worldwide we are faced with a rapidly growing impact of disasters, due to increased vulnerability and climatic extremes. There is an urgent need to include the concepts of disaster risk management into planning, sustainable development and environmental impact assessment. The evaluation of the expected losses due to hazardous events requires a spatial analysis, as all components differ in space and time, using tools that handle spatial

information, such as geographic information systems (GIS).

One of the important requirements to carry out an effective disaster risk management is capacity building and training of disaster management experts and professionals.

For 2009 the following courses are scheduled:

§ [Short course GIS for Disaster Risk Management](#)

In collaboration with: Asian Disaster Preparedness Center (ADPC) and Geoinformatics Center of the Asian Institute of Technology (AIT), Thailand;

§ [Distance Education course Multi-Hazard Risk Assessment](#)

§ [Master of Science degree course in Geo-information for Spatial Planning and Risk Management](#), with the University Gadjah Mada, Indonesia

§ [MSc and Postgraduate diploma course in Applied Earth Sciences](#) – Geo-hazards stream

§ [MSc and Postgraduate diploma course in Geo-hazards](#), with IIRS, Dehra Dun, India.

For more information go to [Website](#).

Workshop on quality, scale and analysis aspects of city models

Lund, Sweden, December 3-4, 2009

Topics

- Multiple representation modelling, storage and analysis of city models
- Integration of 2d and/or 3d-models, as well as image data
- Quality-based generalization: control and evaluation
- Semantic generalization of data models
- Understanding uncertainties in spatial data
- Presentation of quality information by metadata in GIS
- Use of images in quality assurance
- Spatial reasoning process
- Quality of spatio-temporal data and models in urban environment
- All other topics that relates to the theme and the urban context

Important dates

30 June 2009: submission of extended abstracts.

31 August 2009: Notification of acceptance.

1 October 2009: Last day for registration.

1 November: Submission of full papers.

3-4 December: Workshop.

Submission guidelines

[Back to contents](#)

Papers must be written in English and must be formatted strictly according to the [ISPRS guidelines](#). The maximum length of the extended abstract is restricted to 5 pages, including all figures and references. The submission of papers is in ms-word format only.

Publications

All accepted full papers will be published on a workshop CD.

Selected papers will be reviewed for publication in a special issue of ISPRS journal, which is planned to be published in early 2011.

[Workshop website](#)

At this website you can register and submit abstract/papers. [Questions](#)

About Lund

Lund is an old city in Southern Sweden. The city is believed to have been founded around 990, when the Scanian lands belonged to Denmark. It soon became the Christian center of Northern Europe with an archbishop and with the towering Lund Cathedral, built in 1103.

The atmosphere of Lund is much formed by Lund University, one of the largest universities in Scandinavia. Lund University, established in 1666, has around 42,000 full or part-time students. As late as the 1940s, Lund was a relatively small city with few large-scale industries, covering only about a fourth of the current urban area and was dominated by the cathedral and the university. Since then, the student population has increased about twelvefold, many industrial companies in the chemical, medical or electronics branches and, more recently, within information management, have set up establishments in the city, and the town's population, architecture and pulse has been transformed.

Contact: Lars Harrie, GIS Centre, Department of Physical Geography and Ecosystems Analysis, Lund University

Sölvegatan 12, SE-223 62 Lund, Sweden, Tel: +46 46 222 01 55, [Email](#)

[Pitney Bowes online Webinars \[Web Seminars\] archive](#) available at [Map Extreme](#) and [MapInfo](#).

[Back to contents](#)

Funding Opportunities, Awards, Grants

[The 8th Geospatial Solutions Applications Contest](#)

Enter the Geospatial Solutions Applications Contest for your chance to win GeoExpress Tools software from LizardTech, a GPS Bluelogger with XMap 5.2 Professional software from DeLorme, or an ERDAS TITAN GeoHub!

Plus, top entries will be published on the *Geospatial Solutions* Web site. To

enter submit a 500-word (approx) description of your innovative or cost-effective application of geospatial technologies, use the form and instructions available from the website.

(Source: Geospatial Solutions)



[China Scholarship at UNSW](#)

The China Scholarship Council will award an unspecified number of post doctoral scholarships at the University of New South Wales. The scholarships are for study under Dr Linlin Ge, a world renowned expert in the use of space-based interferometric synthetic aperture radar

Source: [Asia Survey Magazine](#)

[PhD Scholarships in China](#)

Professor Xu Aigong is seeking PhD students to study under him at Liaoning Technical University in Fuxin, China. His subjects of interest include geodesy and geomatics, GNSS, GIS and intelligent transportation systems. Students may be eligible for support under the 2009 Liaoning Provincial Government Scholarship Program. Email [Prof. Xu](#).

Note: Closing date for intending 2009 students is April 30. Professor Xu welcomes enquiries from students seeking information for later years.

Source: Asian Survey & Mapping

[Back to contents](#)

Intergraph Opens Nominations for 2009 Carl Pulfrich Award

Award to Honor Outstanding Achievement in Photogrammetry, Remote Sensing and Earth Imaging

Intergraph is now accepting nominations for its biennial Carl Pulfrich Award to recognize significant design and manufacturing contributions to the industries of photogrammetry, remote sensing and earth imaging. The award is dedicated to honorees in memory of Dr. Carl Pulfrich, a key member of the scientific team at Carl Zeiss, Inc., who from 1890 to 1927 oversaw the design of the company's first stereo photogrammetric and surveying instruments. Carl Zeiss, Inc. later teamed with Intergraph to create Intergraph's Z/I Imaging photogrammetry division.

Professionals in the photogrammetry, remote sensing and earth imaging industries may nominate candidates for the Carl Pulfrich Award, which will be presented during the 52nd annual Photogrammetric Week, Sept. 7-11, 2009, in Stuttgart, Germany. The recipient will be granted a monetary reward of up to \$7,500.

"Intergraph has been presenting the Carl Pulfrich award to deserving earth imaging and remote sensing experts since 2001," said Dr. Mostafa Madani, chief photogrammetrist at Intergraph and chairman of the Carl Pulfrich Award Council. "We are thankful to be able to continue offering the award this year. It is very motivating for Intergraph and our peers in the community to simultaneously honor the memory of a true earth imaging pioneer while recognizing the top contributors of this generation."

Nominations for the Carl Pulfrich Award must be received by 5 p.m. (CST) on July 1, 2009. For more detailed information on nomination guidelines and procedures, [please visit](#) .

UPEACE-IDRC Doctoral Research Award and UPEACE-IDRC PhD Fellowships

The UPEACE Africa Programme has secured funding from The Canadian International Development Research Centre (IDRC). This funding will be strictly allocated to African students pursuing their PhD studies at Universities in Sub Saharan Africa and in particular for those, who are in the final stage of their PhD studies. The award is intended to support PhD candidates in their field research, data analysis, associated travel, and production costs. In addition, part of the award may be used to access updated scholarly materials and disseminate research findings through publications and conference presentations. The maximum award is US \$10,000 per eligible student. Deadline: 31 May 2009.

The UPEACE Africa Programme has secured funding from The Canadian International Development Research Centre (IDRC) to offer a limited number of scholarships to African students in PhD programmes focused in peace and conflict studies. The scholarship will cover tuition, living expenses, communications, access to scholarly materials, and disseminate research findings through publications and conference presentations. In addition, part of the award may be used to cover expenses related to a semester abroad at a Canadian university. The maximum award is US \$15,000 per eligible candidate per year. The programme is seeking applications from candidates who are currently enrolled in a PhD programme or who can offer proof of acceptance into a PhD Programme at a University in Sub Saharan Africa for the 2009-2010 Academic Year. Deadline: 31 May 2009.

Thanks to KL for these announcements.

Travel Grant Opportunity to attend AfricaGIS 2009

The ISPRS Foundation is seeking applications from individuals wishing to obtain travel assistance from the "Trust Fund Amsterdam 2000" (administered by the ISPRS Foundation) to participate in [the AfricaGIS International Conference](#), which will be held in Kampala, Uganda, from 26 to 30 October 2009

Deadline for receipt of applications: 10 July 2009. Applicants should read [the preamble and complete the application form](#) which can be downloaded from [the ISPRS website](#).

Thanks to KL for this announcement.

[Back to contents](#)

Employment Opportunities

Spatial Jobs Online (Australia) Because of tight application closing dates the editors provide these websites for employment seekers to access directly: < <http://www.spatialjobs.com.au/> > and < <http://www.GISjobs.com.au> >

Spatial Data Manager

Job Location(s): Australia, Queensland - Brisbane

[Back to contents](#)

Reference: SJE543013
Division: iDivision
Salary: AUD \$77,601 - \$85,161pa (plus 14% superannuation)
Work Type: Permanent full-time
Closing Date: 3 May 2009

[Lecturer/Junior Lecturer in Geographical Information Technology \(2 posts\)](#)

South Africa, Matieland

[Associate Professor/Senior Lecturer in Geographical Information Technology \(2 posts\)](#)

South Africa, Matieland

CLOSING DATES: 15 May, 2009

[International Consultant / Establishment of Early Warning System, Tajikistan](#)

Deadline: 5 May 2009

In order to ensure preparedness and timely response to possible compound crisis by the Government as well as the international community in Tajikistan, United Nations Development Program (UNDP) is seeking for a qualified candidate for the position of International Consultant.

The International Consultant will assist the UN Country Team with a range of tasks related to research and mapping of early warning indicators. Most importantly, the International Consultant will support the development and implementation of analytical tools related to relevant vulnerability factors linked with the early warning indicators.

[Back to contents](#)

Conferences, Events

[Call for Papers for GSDI 11](#)

Rotterdam, The Netherlands, 15-19 June 2009

- all FULL PAPERS submitted to this joint conference arriving on or before **1 December 2008** will be considered for inclusion in a refereed BOOK to be distributed at the conference or in a refereed SPECIAL ISSUE of the International Journal of Spatial Data Infrastructure Research (IJS DIR) to be published after the conference. Additional full papers received by **1 April 2009** also will be considered for the Special Issue of IJS DIR.

Source:

For upcoming events of global or major international interest, please visit the [upcoming conference list](#) on the GSDI website.

The editors welcome news of conferences & events from the newsletter subscribers

Date	Location	Event
May 2009		
3-8 May	Eilat, Israel	FIG Working Week and XXXII General Assembly – New Horizons across the Red Sea – Surveyors Key Role in Accelerated Development Contact
4-6 May	Khobar, Saudi Arabia	The Fourth National GIS Symposium in Saudi Arabia
4-6 May	Denver, Colorado, USA	ESRI Business GIS Summit
4-8 May	Stresa, Lago Maggiore, Northern Italy	33rd ISRSE (The 33rd International Symposium on ‘Remote Sensing of the Environment’)
08-11, May	Riyadh, Saudi Arabia	Remote Sensing Arabia
14 May 2009 “NEW”	Taipei, Taiwan	2009 Conference of Taiwan Geospatial One Stop. Contact
May 21-22	Ibaraki, Japan	GEOSS Sensor Web Workshop
25-29 May	Chengdu, China	EOGC2009 (the Second International Conference on Earth

[Back to contents](#)

		<p>Observation for Global Changes The deadline for abstracts closed on 31 December, 2008. Contact: Xianfeng Zhang, Ph.D., Conference Secretariat, EOGC2009 Institute of Remote Sensing & GIS, Peking University Beijing 100871, China Tel: 86-10-62759123</p>
May 28-30	Molde, Norway	ISO/TC211 28th Plenary
June 2009		
01 – 04 June	Vancouver, BC, Canada	GeoTec Event 2009 E-mail
2-5 June	Hannover, Germany	<p>Call for Papers for the 12th AGILE International Conference Deadline of pre-conference workshop proposals: November 30, 2008; Deadline for full paper submissions: December 12, 2008; Deadline for short paper and poster submissions: January 16, 2009</p>
15-16 June “NEW”	Canberra, Australia	<p>spatial@gov Conference 2009 Abstract submission deadline: 16 March 2009 The 2009 spatial@gov Conference is a new event for the spatial community and will focus on the importance of spatial information in enhancing the business of all tiers of government. This conference will focus on the benefits of using “place” or “location” as a powerful enabler to support policy development, service delivery and internal business processes. The program will cover government spatial activities in the areas of national priority including Social Inclusion, Climate Change and a range of other government activities.</p>
15-19 June Theme: Spatial Data Infrastructure Convergence - Building SDI Bridges to address Global Challenges	Rotterdam, The Netherlands Information: (English) and (Dutch)	<p>11th International Conference on Global Spatial Data Infrastructure (GSDI 11) The first call for papers is published at http://www.gsdi.org/gsd11/papers.html. If you want to secure your participation in the GSDI 11 World Conference, it is now possible to register here as well! DEADLINES: 1 December, 2008 and 1 April, 2009 Contact information: PCO agency GSDI 11 (BlomBerg Instituut/Geonovum) Esther Stukker, tel. +31 (0)73 - 684 25 25</p>
17-19 June	Newport Pagnell, UK	The British Cartographic Society’s Annual Symposium , Mapping At Work. This 3-day event is an opportunity for mapmakers, users, librarians and enthusiasts to share information about recent mapping projects, research and know-how.
22 June 2009	Nottingham, UK	<p>CFP - FIRST OPEN SOURCE GIS UK CONFERENCE 2009 The Centre for Geospatial Science of University of Nottingham, Open Source Geospatial Foundation (UK Chapter), ICA Working Group on Open Source Geospatial Technologies, SOSoRNET and Open Knowledge Foundation are organizing the First Open Source GIS UK Conference Abstracts (max 500 words) can be submitted before 15 March 2009. IMPORTANT DATES: * Final papers delivered by: 15 May 2009 * OSGeo UK Live Software demo submission deadline: 30 April 2009 * Notification of acceptance: 15th May 2009</p>
June 29-30, “NEW”	Ulaanbaatar , Mongolia	<p>The National University of Mongolia will be holding the 3rd International and National workshop “Applications of Geoinformatics for Mongolian Natural Resource and Environment” Participants are invited to electronically submit their abstracts and interest of attendance. The abstracts should be submitted as an email attachment to or alternatively to.</p>

		<p>Abstracts must include title, authors (first name, surname), indicating the presenter by underlining their name, and providing lead author's contact details: affiliations, department, full address (street, city, state/province, and country), telephone, fax, and email. Student paper session will be held during the workshop.</p> <p>Important Dates: Abstract Deadline: April 26, 2009 Full paper Deadline: June 5, 2009 Registration Deadline: June 26, 2009 Conference Dates: June 29-30, 2009</p>
29 June – 2 July	Yongin, Korea	<p><u>Fourth International Workshop on "Geographical Analysis, Urban Modeling, Spatial Statistics" (GEOG-AN-MOD 09)</u> in conjunction with <u>The 2009 International Conference on Computational Science and its Applications (ICCSA 2009)</u> June 29th to July 2nd, 2009 Kyung Hee University-Global Campus, Yongin (Korea)</p> <p>*Important dates *16 February 2009: Deadline for full paper submission *24 March 2009: Notification of acceptance *12 April 2009: Deadline for Camera Ready Papers *June 29 - July 2, 2009: ICCSA 2009 Conference.</p>
June 29-July 10	Florence (Firenze), Italy	<u>Vespucci summer institute 2009: 7th Annual Summer Institute on Geographic Information Science</u>
July 2009		
7-10 July "NEW"	Salzburg, Austria	<u>GI Forum 09</u>
7-11 July	Cape Town, South Africa	<u>2009 IEEE International Geoscience & Remote Sensing Symposium (IGARSS)</u>
13-14 July	Oxford, UK	<p><u>GEOSENSOR NETWORKS 2009</u> Sponsored by: University of Oxford Papers to be published by Springer</p> <p>IMPORTANT DATES: Paper Submission: 3 April 2009 Notification of Acceptance: 27 April 2009 Camera Ready Papers Due: 5 May 2009 Conference: 13-14 July 2009</p>
13-17 July	San Diego, CA, USA	<p><u>29th ESRI International User Conference</u> The deadline for abstract submissions has CLOSED</p>
13-17 July	Cairns, Australia	<p><u>18th IMACS WORLD CONGRESS</u> <u>MODSIM09</u> International Congress on Modelling & Simulation "Interfacing Modelling and Simulation with Mathematical and Computational Sciences" Early Bird Registration closes Friday 13 March 2009 Submission and Acceptance of Abstracts has CLOSED Final papers submitted Friday 13 March 2009</p>
24-6 July "NEW"	Hyderabad, India	<p><u>3rd International Conference on HealthGIS 2009</u> Email Call for papers:</p> <ul style="list-style-type: none"> • Abstract Deadline 10th April 2009 • Full Paper Deadline 10th May 2009 • Early Registration 19 th June 2009

July 27-31	Vancouver, Canada	<p>GeoWeb2009 GeoWeb 2009 organizers are currently seeking submissions for presentations and workshops. Details: All abstracts must be less than 200 words and be submitted via the online form no later than February 27, 2009. For all questions regarding the submission of abstracts and agendas please contact Julie Eckhart. Complete information on the call for papers process and conference may be obtained at http://www.geowebconference.org.</p>
August 2009		
4 - 6 August "NEW"	Fairbanks, Alaska	<p>The GeoNorth 2009 conference is a unique opportunity to discuss issues and present current research related to geospatial activities in the arctic environment. This conference provides an opportunity to present results associated with the International Polar Year (IPY), environment and climate change monitoring and geographic analysis, geospatial standards and their application, and the construction of virtual collaborative networks including Arctic mapping and the virtual Arctic Spatial Data Infrastructure (ASDI). The conference is coordinated by the USGS, the University of Alaska Fairbanks, and the IPY Program Committee. Sessions are planned for the following themes with a focus on the development, publication, and application of interdisciplinary data for analysis and re-use in the Arctic context:</p> <ul style="list-style-type: none"> * Societal, cultural, and indigenous mapping of local and traditional knowledge * Imagery, remote sensing, and sensor networks for the arctic landscape * Virtual globes, geo-browsers, and spatio-temporal data exploration * Ocean data access and analysis * Natural resource assessment in the Arctic * Understanding and assessing changes on land and ice * Climate and atmospheric data, trends, and analysis * Forum on arctic mapping and the Arctic Spatial Data Infrastructure * Geosphere and hydrosphere modeling * Understanding geospatial standards and their application <p>The following website includes information on the conference, the Call for Papers, and registration details. We look forward to your participation!</p>
4 - 7 August	Bali - Indonesia	<p>10th South East Asian Survey Congress (SEASC '09) Hosted by Bakosurtanal (Indonesia's land information agency) Contact Website: < http://www.seasc2009.org/ ></p>
3-14 August	Rio de Janeiro, Brazil	<p>XXVII General Assembly of the International Astronomical Union</p>
7 – 8 August "NEW"	Darwin, Australia	<p>2009 IMTA Asia Pacific Conference Call for Papers The International Map Trade Association is hosting an Asia Pacific conference and trade show. The theme is 'Connecting the Business of Maps in Australia's Top End'. The organisers have issued a call for presentations. Presentations may address any topic closely related to the geospatial industry. The deadline for applications is 24 April. International Map Trade Association contact Damien Demaj</p>
August 12-14, 2009	Fairfax, Virginia, USA	<p>The 17th International Conference of Geoinformatics (Geoinformatics 2009) George Mason University,</p>
August 13-14	Perth, Australia	<p>2009 Australasian Mine Surveying Conference</p>

[Back to contents](#)

"NEW"		The event will bring together mining industry surveyors and spatial professionals from Australia, South East Asia and the South Pacific. It is a joint venture between the Australian Institute of Mine Surveyors and the Spatial Sciences Institute. Email
August 16-19	Hong Kong	10th Asian Urbanisation Conference Email
24-9 August "NEW"	Dresden, Germany	1st International Conference on 3-D Maps http://kartographie.geo.tu-dresden.de/true3Dincartography09/
27-8 August	Bishnek, Kyrgyzstan	GISCA '09 Conference (3rd Central Asia GIS) Call for Papers announced for GISCA'09 Conference Contact Submission of contributions: May 1 - Submission of abstracts (min 500 words) June 1 - Notification of acceptance July 1 – Camera-ready copy of full papers (see authoring instructions!) Aug 1 – Registration for poster exhibit Pre-conference events: Aug 14-16 Joint ICA-UNIGIS summer school in Kashgar Aug 17-23 ICA-led field trip Kashgar-Lhasa return Aug 24-26 pre-conference summer school and various workshops in Bishkek
28-9 August	Bangalore, India	The iGeoMap 2009 conference on urban infrastructure and geoinformatics. The Indian Institute of Science and GIS Consultancy Sky Group are calling for paper submissions. The conference will address urban infrastructure issues and GIS practices.
September 2009		
2 - 5 September "NEW"	Baška, Krk Island, Croatia	The Royal Institute of Navigation, London, UK, and the Institute of Engineering Surveying and Space Geodesy, University of Nottingham, UK have a pleasure in inviting you to participate to the 2nd GNSS Vulnerabilities and Solutions Conference to be held on 2 - 5 September 2009 in Baška, Krk Island, Croatia. Extended abstracts should be submitted to Dr Renato Filjar , FRIN by e-mail no later than 1 May, 2009. Final decision regarding the paper acceptance will be reached by 1 June, 2009, when the authors of accepted articles will be notified of abstract acceptance and kindly invited to submit their papers (up to 10 pages recommended, in the Journal of Navigation-style format) by 15 July, 2009.
8 September "NEW"	Jena, Germany	The workshop "Performance Evaluation of Pattern Recognition in Remote Sensing" of the ISPRS Intercommission Working Group III/VII "Pattern Recognition in Remote Sensing" will be held in Jena, Germany, on 08th September 2009 in conjunction with the DAGM Symposium 2009 . Date for Submission of Papers – 1 June, 2009 Author notification – 20 July Camera ready manuscript – 3 August Workshop – 8 September
8-10 September "NEW"	Tsukuba, Japan	International Workshop on the Revision of Specifications for Global Map Version 2 The details will be informed on the ISCGM Website as soon as determined.
9-12 September	Beijing, China	6th International Symposium on Digital Earth E-mail The deadline for abstract submissions for the 6th International Symposium on Digital Earth (9-12 September, Beijing) has been extended to 30 April

[Back to contents](#)

		Secretariat, The 6 th International Symposium on Digital Earth 14F, Kedian Tower, No.9 Beiyitia Road, Zhongguancun, Beijing, 100190, China Tel: 86-10-58887298, Fax:86-10-58887406 Email for ISDE ISDE WEBSITE
14-16 September	Beijing	Emergency Management Conference The international conference on Geospatial Solutions for Emergency Management (GSEM 2009) is being held in conjunction with the 50th anniversary of the Chinese Academy of Surveying and Mapping. The organisers are calling for papers on themes including data and image fusion, disaster management and new sensors. The deadline for abstracts is 31 March.
21-25 September	Venice, Italy	OceanObs '09
October 2009		
4-8 October, "NEW"	Cleveland, Ohio, USA	NSGIC(National States Geographic Information Council) 2009 Annual Conference
5-7 October	Westminster, Colorado	More information will be forthcoming but we ask you to "save the date" for the Location Intelligence Conference 2009 . We'll be at the Westin Westminster Hotel in Westminster, Colorado, just outside of Denver toward Boulder from Oct. 5-7
7 - 9 October 2009 "NEW"	Taipei, Taiwan	GIS in the Humanities and Social Sciences 2009 International Conference . This significant international Geographical Information Science event aims to bring together an eclectic mix of humanists and social scientists who have used GIS in their work. With a view to the development of GIS as an effective tool and approach for disciplines in the humanities and social sciences, scholars considering using GIS and doctoral students are welcomed as well. Alternative URL Abstract deadline: June 15, 2009.
15 October 2009 "NEW"	Taichung, Taiwan	2009 Urban Geographical Information System Forum Contact
19-22 October "UPDATED"	Hanoi, Vietnam	7th FIG Regional Conference <i>awaiting Timeline for registration and submission of abstracts, papers, and presentations</i> Conference Website Electronic submission of papers by 10 June 2009
20-23 October "NEW"	Sydney, Australia	FOSS4G 2009 Call for Abstracts Email The Organising Committee would like to welcome all interested participants to submit abstracts for presentations for the Free and Open Source Software for Geospatial conference (FOSS4G) , being held in Sydney, Australia October 20-23. FOSS4G offers participants an opportunity to learn from and share your knowledge, experience and ideas with a group of like minded individuals representing a wide array of industries, governments, technologies and nationalities. Presentations are open to all those interested and will comprise a 30 minute slot which includes hand-over, introductions and 5 minutes for questions. Presentations will be selected which have a strong "Open Geospatial" theme to them. The committee is looking for a mixture of technical and non-technical presentations. Email2
25 October "NEW"	Bangkok, Thailand	16th Meeting of ISCGM (International Steering Committee for Global Mapping)
26-30 October "NEW"	Bangkok, Thailand	18th UNRCC AP/15th PCGIAP Meeting

26-29 October	Kampala Uganda	AFRICAGIS 2009; International Conference Theme of the conference "GEO-SPATIAL INFORMATION AND SUSTAINABLE DEVELOPMENT IN AFRICA; FACING CHALLENGES OF GLOBAL CHANGE"
November 2009		
10-12 November	St Petersburg, Florida, USA	Fifth National GIS in Transit Conference This biennial conference will focus on the growing role of GIS in supporting planning, service delivery, and decision making in public transit. The Programme Committee will organise an educational programme based upon the abstracts submitted through the Call for Participation. All abstract submissions, received by February 27, 2009, will be reviewed and considered for this conference. The Program Committee encourages abstract submissions in one or more of these four general categories - Applications, Tools, Data, and Management & Policy. Website: http://www.urisa.org/gis_transit
15-22 November	Santiago, Chile	XXIV International Cartographic Conference First call for papers Deadline for Abstracts: 16 January, 2009
17-20 November	Denver, USA	7th William T. Pecora Memorial Remote Sensing Symposium E-mail
30 November - 2 December	Sydney, Australia (Univ NSW)	GeoComputation 2009 Call for Papers The 10th International Conference on GeoComputation Contributors are invited to submit extended abstracts, which will be reviewed for inclusion in the conference program. The abstracts should be sent as either Word documents or pdf files to geocomputation@unsw.edu.au Files larger than 1Mb should be sent as zipped archives. The submission deadline is 30 June 2009 . Authors will be notified of acceptance/rejection in the end of August 2009. Any questions regarding the submission and publication process should be addressed to geocomputation@unsw.edu.au
December 2009		
1 – 3 December "NEW"	Gold Coast, Australia	Organisers of the International Global Navigation Satellite Systems Society's (IGNSS) 2009 symposium and exhibition (1-3 December, Gold Coast, Australia) are calling for papers. Abstracts should be submitted by 17 July 2009. The Society will present three award plaques on the last day of the symposium for the best papers and exhibition booth. IGNSS 2009
1 – 3 December "NEW"	Moscow, Russia	Scanex 4th International Conference "Earth from Digital Space – the most effective solutions" Email
April 2010		
11-16 April	Sydney, Australia	International Federation of Surveyors (FIG) Congress 2010 Contact email The deadline for submission of abstracts is 22 September 2009. Alternative URL:
Date to be announced	Taipei	ASIA GIS 2010 Conference further details to be announced

[Back to contents](#)

[Back to contents](#)



Spatial Data Infrastructure Asia & the Pacific Newsletter

To subscribe to SDI-AP, please do so [online](#). To contact please [email](#) the editors. [Global Spatial Data Infrastructure Association](#).

Please mention SDI-AP as a source of information in correspondence you may have about items in this issue.
DISCLAIMER: The Editor and Web Host will not be held liable for any errors, mistakes, misprints or incorrect information.

Copyright © 2009. All rights reserved.