

Spatial Data Infrastructure – Asia and the Pacific (SDI-AP) is a free electronic newsletter from the [Global Spatial Data Infrastructure Association \(GSDI\)](#) which is available in both English and Chinese language versions. The newsletter is produced for people interested in Spatial Data Infrastructure, GIS, remote sensing and geospatial data issues in Asia and the Pacific. It aims to raise awareness and provide useful information to strengthen SDI initiatives and support synchronising these activities across the region. Support for the newsletter is also provided by the [Permanent Committee on Geographic Information for Asia and the Pacific \(PCGIAP\)](#), a regional forum to enhance cooperation in the development of a regional geographic information infrastructure. The newsletter is currently being produced for GSDI by the [Centre for Spatial Data Infrastructures and Land Administration](#) at the University of Melbourne.



To subscribe to SDI-AP use [this link](#). Back issues of the newsletter are at the [GSDI website](#). You can also sign up for [GSDI News List](#) to receive alerts of special news and announcements as well as notification of new issues of the SDI-AP newsletter. To subscribe and access archives of thematic or regional discussion lists [please visit](#).

Contents

Message from the editors.....	1
Contributions	1
GSDI News.....	2
SDI News, Links, Papers, Presentations	2
SDI Spotlight.....	3
GIS Tools, Software, Data.....	4
News from abroad.....	7
Articles	8
Books and Journals (including Videos and Web publications).....	9
Just for Fun!.....	10
Training Opportunities.....	11
Funding Opportunities, Awards, Grants.....	12
Employment Opportunities.....	14
Conference Proceedings.....	14
Conferences, Events.....	15

Message from the editors

Welcome to the October issue of the newsletter for the year 2012.

If you have news or information related to SDI, GIS, RS or spatial data that you would like to share with the community (e.g. workshop announcements, publications, reports, websites of interest etc.), kindly [send us](#) the materials by the 25th of the each month for your contribution to be included in the next newsletter.

Malcolm Park and Serryn Eagleson ([Editors](#)), at the [Centre for Spatial Data Infrastructures and Land Administration](#), The University of Melbourne.

Contributions

Thank you to the following people and organisations for their contributions to this issue: Baek Wonkug for news feeds, Sean Lin and colleagues for the Chinese translation as well as Shivani Lal, *GIS Development*, *GeoSpatial World* and *Asia Surveying & Mapping* magazine for directly contributing to the newsletter.

[Back to contents](#)

GSDI News**[International Geospatial Society \(IGS\) Free Memberships](#)**

At its recent meeting, the GSDI Board of Directors passed a motion that allows individuals in low and very low income nations to join the International Geospatial Society (IGS) by providing specific information of value to the global community in lieu of annual cash dues. To join, simply add your professional profile to the growing interconnected network of geospatial specialists across the globe. Benefits of membership in IGS are listed at <http://www.igeoss.org/benefits>. For further information, contact [Harlan Onsrud](#), Executive Director, GSDI Association.

[Back to contents](#)

SDI News, Links, Papers, Presentations**[Sri Lanka, UN to improve disaster management through Open Data](#)**

The Survey Department of Sri Lanka and the United Nations Office for the Coordination of Humanitarian Affairs (UNOCHA) signed an agreement for digital data dissemination, the first of its kind between the Government and the UN, which will allow organisations to freely use Government geographic data for disaster management purposes.

The initiative stemmed from the need to address challenges posed by the lack of access to essential information needed to make well-informed decisions during critical situations.

According to Mahesh Fernando, the Surveyor General of the Survey Department of Sri Lanka, the agreement will assist in addressing information gaps in disaster management by improving how disaster related information is analysed.

The agreement ensures that national authorities and as well as other humanitarian partners are able to access, share and use geographic data to make disaster preparedness and response activities more efficient and effective.

Meanwhile, Brendan McDonald, Head of UNOCHA Sri Lanka, said that the agreement was a practical example of the Government's commitment to the implementation of the *Hyogo Framework for Action* which was adopted by the Government in 2005 at the World Conference on Disaster Reduction, Japan.

Based on UNOCHA's reports, the economic cost of disasters over the last ten years in Sri Lanka has exceeded 257 billion rupees (USD 1.95 billion dollars). McDonald noted that with the partnership in place, the government and other humanitarian organisations will be able to work together to reduce the impact of disasters on people's lives, as well as the Sri Lankan economy and environment.

[Azerbaijan SDI](#)**[A. Technical Committee on Standardisation created in Azerbaijan for effective land evaluation](#)**

A technical committee on standardisation TC-11 has been created in Azerbaijan in order to effectively assess land and develop national standards for state, municipal and private forms of land ownership in Azerbaijan, the chairman of the State Land and Cartography Committee of Azerbaijan Republic Garib Mammadov said at a presentation of the technical committee on standardisation, Evaluation of land and geographic information and geometrics.

"The structure of the TC-11 will include the secretariat and six sub-committees, such as means to improve the quality of the land, land evaluation, geospace services, images, management of inventory data and the information society and Geodesy and Cartography, Mammadov said.

Mammadov noted that a list of 20 member companies sitting on the technical committee has also been approved.

The committee has been created based on the joint order of the State Committee on Standardisation, Metrology and Patent, and the State Committee for Land and Cartography.

The committee is created to assess the land cadastre, geodesy and cartography, geographic information systems, organisation and implementation of national, regional and international standardisation activities in the field of national spatial data infrastructure.

The list of member organisations includes the central executive authorities engaged in relevant activities, state agencies, research institutes of the National Academy of Sciences of Azerbaijan as well as a number of universities and companies.

[Back to contents](#)

[B. Azerbaijan to set up a national standard for spatial data infrastructure](#)

[The State Committee on Standardization, Metrology & Patents of Azerbaijan](#) established a new Technical Committee for Evaluation of Land & Geographic Information Science/Geomatics.

The Committee reports that among its functions is to provide land valuation, land survey, land cadastre, geodesy and cartography, geographic information systems (GIS), as well as the basic territorial security of information and navigation services. "In addition, the Technical Committee will develop a plan of standardization of national spatial data infrastructure, in particular development of state standards in this direction, clarification of existing standards".

[C. The National Spatial Data Infrastructure in Azerbaijan](#) (PDF)

This collection has been made on the basis of materials related to the International Theoretical and Practical Conference on the subject of The Role of the Unified Cadastre of Real Estate and National Spatial Data Infrastructure in Property Administration which was held in Baku on October 6-7, 2011 and organized by the State Committee on Property Issues of the Republic of Azerbaijan and the World Bank.

[Back to contents](#)

SDI Spotlight



This month's "Spotlight" feature is from Nilofer Tambuwala who is a PhD candidate at the Centre for Spatial Data Infrastructures and Land Administration within the Department of Infrastructure Engineering at the University of Melbourne. Nilofer's research is multi-disciplinary, looking at land administration for macroeconomic policy and sustainable development; with a focus on federated countries. Her research is part of an ARC Linkage project titled: A National Infrastructure for Management Land Information (NIMLI). This article is an update on the Spotlight feature published in the December 2011 issue of this newsletter. The editors note that this contribution from Nilofer is likely to be her last as a post grad student as she is scheduled to submit her thesis in the near future and we wish her well in her post doc career.



Nature as a land infrastructure design tool

The dominant focus of how we live and operate in society has changed over the last decade, to the economic reality of scarce natural resources and a shared vision for sustainable development. New markets are emerging as a way to manage scarce resources as new land interests are recognised. Land administration provides the infrastructure for secure land market transactions, and government macroeconomic policies work to manage the economy as a whole. As new land markets develop, there is an increasing need for better, more reliable information for improved economic management of land and its resources.

This need is most evident in many federated market economies where land administration is undertaken by state, provincial, or local governments; while macroeconomic policies to manage land markets occur at central level. In these countries, the capacity of independent, state-based land administration agencies to meet increasingly national drivers, particularly national economic policy, is challenging. This stems from an information asymmetry often caused by inadequate information flows between state and central governments. State based laws and processes make it difficult for central policy departments to access integrated land information, to manage markets that are increasingly national in focus.

Past, traditional approaches to improve land information access have achieved varying levels of success. However new markets are threatened by information asymmetries in the land sector that still remain unchecked, and there is an increasing need for an unencumbered, innovate approach. In particular, the increasing focus on sustainable development, natural systems and 'green' economies has shown the utility of *biomimicry*.

Biomimicry forms part of a radical new way of thinking, namely, *natural capitalism* that values natural resources as an internal asset rather than an externality. It encourages a shift in business practices to biologically inspired models that place higher value on solution-based systems and the flow of services. This innovative approach is

[Back to contents](#)

ideal for the evaluation and improvement of current land administration systems for future sustainability. As Albert Einstein said, "We can't solve problems by using the same kind of thinking we used when we created them."

Nature can deliver the best architecture having evolved over 3.8 billion years of what can effectively be called trial-and-error or *research*. Biomimicry uses nature as a model, to study and design real-world systems that emulate the efficiency and sustainability of processes in nature. It allows for a new, modern approach to unify land administration and macroeconomic policy for sustainable development.

The UN Conference on Environment and Development, RIO 1992, can be considered the first global innovation summit. Twenty years on, innovation, particularly 'green growth' is still a key feature of RIO+20, the UN Conference on Sustainable Development. Green growth encourages, among other principles, innovative business models for sustainable growth that minimise waste. Minimising waste in systems design is a defining principle of biomimicry.

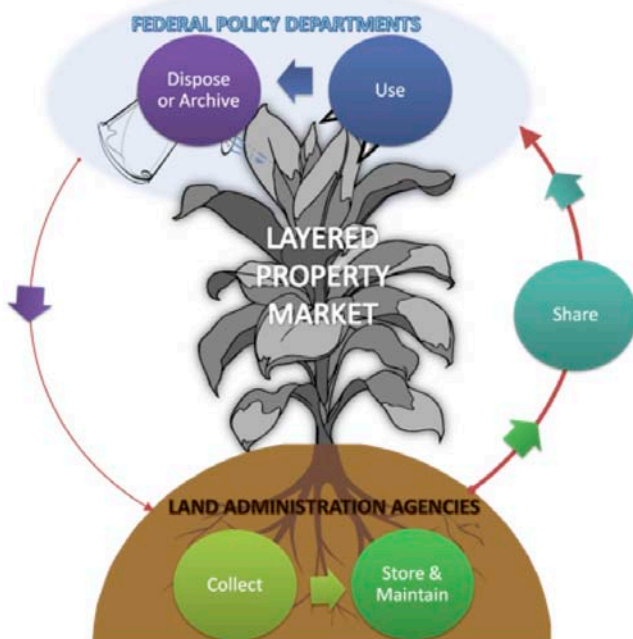


Figure 1: A national land information flow lifecycle

A lifecycle approach

Closed-loop cycles in nature work to eliminate waste. In the context of land administration systems, waste occurs in the form of duplication, redundant processes and issues of timeliness, relevance and authority that bring the reliability of information into question. Emulating natural processes, or biomimicry, to improve current land administration can help to minimise or eliminate wasteful processes and resources, resulting in increased sustainability of current systems.

The Property Market Tree (presented in the Spotlight section of the December 2011 edition of the SDI-AP newsletter) illustrates the need for adequate information flows between the government land administration and policy departments, in order to sustain a healthy land market. Figure 1 adds an information flow *lifecycle* to this model, drawing on cradle-to-grave cyclical processes in nature, for a nation-wide approach to authoritative land information access and delivery at higher levels of

government. This model is proposed as the ideal situation for achieving a national land information infrastructure to sustainably manage land markets. Establishing an operational link between land administration agencies and central macroeconomic policy departments via an information flow lifecycle design, will enable better national economic policy and sustainable development.

The editors remind our subscribers and readers that we welcome contributions for the *Spotlight* feature.

[Back to contents](#)

GIS Tools, Software, Data

Apple's Map debacle

The decision by Apple to replace Google Maps with its own Map app with the recently released iPhone 5 and the latest iteration of its iOS 6 operating system was premature and perhaps disastrous. Even after Apple fixes the problem(s), its reputation for infallibility will have been lost.

Sources: [The Age](#), [9to5Mac website](#),

Dr. Mike Dobson, an expert in cartography and owner of local search and mapping consulting company TeleMapics, [recently published a lengthy post](#) on his company's blog to explain the problems with Apple's new Maps app.

[Apple and Google map services compared - interactive](#) (Source: The Guardian)

For a more sober assessment see Matt Ducksm & Stephan Winter, [Is Apple Maps on a road to nowhere?](#)

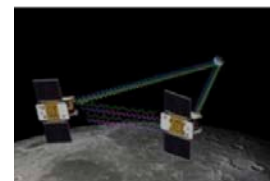
Source: The Conversation website

[Back to contents](#)

[Tandem Satellite Mission Reveals a Thinner Lunar Crust](#)

The first results from the GRAIL gravity-mapping mission suggest that the crust's average thickness is only 30 kilometers, not twice that as Apollo seismometers estimated

Source: Scientific American and [Nature](#)



[The Philippines Begin 3D Mapping of the Entire Country](#) by Matt Ball

Later this month, scientists and researchers in the Philippines will begin mapping the entire country's topography in 3D using LIDAR equipment from Canada-based Optech. The P200 million project will create a high-resolution map of the country in a project dubbed the Nationwide Operational Assessment of Hazard or NOAH. While the primary purpose is mapping for flood disasters, the data will be useful for a number of purposes.

Source: Asian Surveying & Mapping



[Geo-Wiki Project](#)

The [Geo-Wiki Project](#) is a global network of volunteers who wish to help improve the quality of global land cover maps. Since large differences occur between existing global land cover maps, current ecosystem and land-use science lacks crucial accurate data (e.g. to determine the potential of additional agricultural land available to grow crops in Africa).

[Register for the Geo-Wiki Project](#)

Source: Scientific American "Citizen Science"

[Remote Controlled High-Definition Octocopter](#)

New Zealand-based aerial imaging company Sycamore is harnessing the power of remote-controlled flying vehicles to capture high-resolution imagery from unique angles. The company used a octocopter controlled by a licensed pilot and assisted by a camera operator, all overseen by a nonflying supervisor. The unique flexibility of the device and the stunning imagery are being harnessed for a wide variety of applications.

[Watch the video](#)

Source: Asian Surveying & Mapping

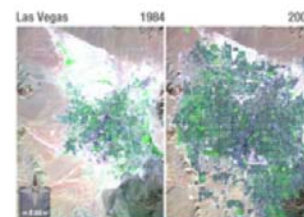
[Global Map Pakistan version 2](#)

The Secretariat of the International Steering Committee for Global Mapping (ISCGM) has released Global Map Pakistan version 2. It is a collaborative effort of [Survey of Pakistan](#) () and ISCGM.

[Gigalopolises: Urban Land Area May Triple by 2030](#)

Suburbs, slums and city centers may grow by more than a million square kilometres — much of it now home to wildlife

Source: Scientific American



[Mumbai Enlists Public Participation to Map and Monitor Land Use](#)

Efforts are underway and ongoing across cities in India to document current land use patterns in order to formulate the next development plan.

Source: Asian Surveying & Mapping



[Google's 360-degree tour of the deep blue sea](#)

Australia's Great Barrier Reef has been opened to an audience of more than one billion people worldwide as Google launches a virtual tour of one of the seven natural wonders of the world.

Users can log on to Street View on Google Maps and Google Earth and explore high-resolution, 360-degree images of the reef that are being gathered as part of the Catlin

Seaview Survey, which documents the health of coral reefs around the world.

Source: The Sydney Morning Herald

[Back to contents](#)



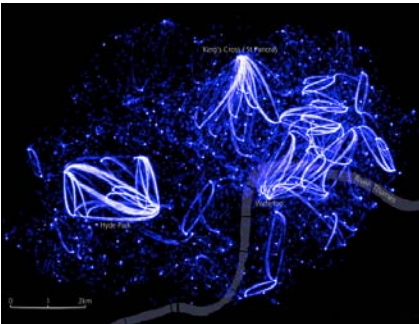
[This Vest May Well Be the Future of Indoor Mapping](#)

According to MIT, the future of indoor mapping could be a new prototype they've developed. It's a wearable vest equipped with a stripped down camera from the Microsoft Kinect video game system that can scan a 270-degree arc as it moves through an environment. The setup is also outfitted with accelerometers, gyroscopes and a barometer to track the shape and form of the mappable space as the walker moves around.

This video explains further, and shows how a 3D map of an indoor area can instantly develop as a person wanders through a building.

Source: Atlantic "Cities" and [MIT](#)

[Tron-like map of bike journeys reveals London's hubs](#)



It's a snapshot of 5 million bicycle journeys - and a handy map of London's commuter hotspots.

This image is a still from an animation created by visualisation specialist Jo Wood at City University in London. He based it on data from the first 5 million journeys pedalled in the Barclays Cycle Hire scheme since its launch in July 2010.

Visual analytics allow transport planners and organisations such as Transport for London to make better informed decisions to support the movement of people around our cities. The next level is to add anonymised user profiles to the data. This would give more information about people's use of the bicycles over time, which could lead to better placement of new

docking stations and help balance load across the network.

Source: New Scientist

[Take a Field Trip With Google Field Trip for Android](#)

A new mobile app from Google – Field Trip. Field Trip can help you learn about everything from local history to the latest and best places to shop, eat, and have fun. You select the local feeds you like and the information pops up on your phone automatically, as you walk next to those places.

Source: Anything Geospatial GISuser Blog by @gletham

[Effort Underway to Map Global Waste](#)

The Foundation for Sustainable WasteResources, a global non-profit that is focused on efficient waste management, is pulling together a global map of waste disposal practices. The organization counts Esri as a major partner. The goal is to combat the most prevalent waste management practice of open dumping that has a negative impact on human health and the environment, particularly in developing regions.

Source: Asian Surveying & Mapping

[How Google Builds Its Maps—and What It Means for the Future of Everything](#)

Behind every Google Map, there is a much more complex map that's the key to your queries but hidden from your view. The deep map contains the logic of places: their no left turns and freeway onramps, speed limits and traffic conditions. This is the data that you're drawing from when you ask Google to navigate you from point A to point B and last week, Google showed me the internal map and demonstrated how it was built. It's the first time the company has let anyone watch how the project it calls GT, or "Ground Truth," actually works.

Source: The Atlantic

[The dark side of digital mapping](#)

Over the last few years, at the kinds of conferences where the world's technological elite gathers to mainline caffeine and determine the course of history, Google has entertained the crowds with a contraption it calls Liquid Galaxy. It consists of eight large LCD screens, turned on their ends and arranged in a circle, with a joystick at the centre. The screens display vivid satellite imagery from Google Earth, and the joystick permits three-dimensional "flight", so that stepping inside Liquid Galaxy feels like boarding your own personal UFO, in which you can zoom from the darkness of space down to the ocean's surface, cruising low over deserts, or inspecting the tops of skyscrapers. (The illusion of real movement is powerful; your legs may tremble.) You can swoop down to street-level in Cape Town, spot ships in the Mekong river, or lose yourself in the whiteness of Antarctica.

Source: The Guardian and the [SMH](#)

[Back to contents](#)

Data sources in New Zealand – posted in the Thematic Mapping blog. [Getting free data in New Zealand](#)

So far on my travels through New Zealand I've been a bit frustrated with the the slow and costly WiFi services. Access to publicly funded data about the country is a totally different story. It's fast, easy, and free! Countries who lock up their publicly funded data (including my own country, Norway) should definitely look to New Zealand.

So where can you get free data about New Zealand? As I've just been in the country for two weeks, I'm not the best person to answer this question. But I've done some research and the natives were happy to tell me when I asked this question on my blog a few weeks ago.

[Koordinates](#)

This great Auckland-based company has created a portal which allows you to search, sort, bookmark and share geographic data sets. Download in the the format, projection and area you need, connect with web services using industry standard services or developer friendly APIs, or explore data within the browser. It's a success story in how geodata should be distributed.

[LINZ Data Service](#)

Land Information New Zealand (LINZ) is the national provider and administrator of a wide range of geographical information. Here you can download hydrographic and topographic data (up to 1:50,000 scale), in the same easy to use Koordinates-fueled interface.

[LRIS Portal](#)

The Land Resource Information Systems (LRIS) Portal is hosted by Landcare Research, an Environmental research organisation specialising in sustainable management of land resources. Here you can find a 25 meter Digital Elevation Model (DEM) of the North and South Island, - and a lot of data about the environment in New Zealand. Some of the data from Landcare Research is also [available as a web service](#) (WMS, WMS-C).

[The National Land Resource Centre \(NLRC\)](#)

A science center coordinated by Landcare Research in collaboration with other science organisations, government and businesses. They've created an extensive list of datasets provided by different organisations related to land resources.

[geodata.govt.nz](#)

A catalogue of publicly-funded geospatial data, and part of New Zealand's developing national spatial data infrastructure (NSDI).

[data.govt.nz](#)

A directory of publicly-available, non-personal New Zealand government held datasets. This site does not host data, instead it links to datasets held on other government websites.

[DigitalNZ](#)

An initiative led by the National Library of New Zealand helping people to use digital material from libraries, museums, government departments, publicly funded organisations, the private sector, and community groups.

Other resources:

- [New Zealand Bathymetry \(NIWA\)](#)
- [GNS Science](#)

[Back to contents](#)

News from abroad

"This section has been included to highlight some of the developments happening outside the region which demonstrate SDI in action."

[In Search of a Uniform Way to Define the City](#)

The edges of a city's defined borders don't really mean all that much when they bleed into yet more urbanity. The stereotype of sprawling Greater Los Angeles, for example, shows hardly any discernible distinction when crossing over the border from Los Angeles proper to neighboring Inglewood or El Segundo or Long Beach.

So when the city is more than a single city – a metropolis – how do we compare one city or urban agglomeration to the next? For now, we do it very imprecisely, by say, comparing the distinctly dense Hong Kong with radiating London. But a new set of metropolitan definitions is hoping to make city-to-city comparison a lot more sensible in an age of urban agglomerations indifferent to borderlines.

A [report from the OECD](#) proposes a new way of looking at and comparing the world's urban areas by crafting a formalized approach to defining them. In "Redefining 'Urban': A New Way to Measure Metropolitan Areas," authors Monica Brezzi, Mario Piacentini, Konstantin Rosina, Daniel Sanchez-Serra propose the concept of

[Back to contents](#)

"functional urban areas" that are based on population density and travel-to-work flows. Basically, it's a measurement of population and interconnected economies.

Source: Atlantic "Cities"

[French Winemakers Get Help from Above](#)

Satellite images are helping French winemakers harvest grapes at the peak of ripeness, leading to a better glass of wine.

Source: Scientific American

[Back to contents](#)

Articles

[Should we still use the term geospatial or Is it time to go back to maps and mapping?](#) by Matt Ball

We've all had difficulty describing geospatial technology to non-industry insiders, but there is a universal term that everyone recognizes, and that's maps and mapping. Many have amended computer-based to mapping, and thus given a distinction of a transition, but now we're all making maps with computers. At this point of computer software tool evolution and digital data capture dominance over paper, what about going back to the simpler, more universal, and better established terms?

Source: Sensors & Systems

[Location Intelligence and Emergency Management: Prevent, Prepare, Respond and Recover with Confidence](#) by Sean Richards and Ashley Crane

Location Intelligence is empowering emergency managers to be better prepared, to respond in a more informed manner, and undertake recovery operations guided by a clear understanding of the situation. Applications providing location intelligence are indispensable to emergency workers as they provide the ability to display a large amount of information shown via an intuitive medium and location-enabled perspective. The end result is faster collaboration and interoperability between emergency management systems, providing confidence in the decision making process. Let's review the role of location intelligence during different phases of an event.

Source: Asian Surveying & Mapping

[How California Legislated Its Way to Smarter Growth](#)

A thorough new report developed by my colleagues at the Natural Resources Defense Council, together with Move LA, a transportation and smart development partnership in southern California, documents the impressive progress made over the last four years to ensure that our nation's most populous state will absorb future growth in a sensible way. Called [Bold Plans for California Communities](#), the report traces the history and implementation of the state's landmark planning framework, adopted by the state legislature and in 2008.

Source: Atlantic "Cities"

[Metrics to Measure Open Geospatial Data Quality](#)

Published in *Issues in Science and Technology Librarianship* (Winter 2012)

Abstract:

This paper explores measurement standards on the quality of open geospatial data with the purpose of optimizing data curation and enhancing information systems in support of scientific research and related activities. A set of dimensions for data quality measurement is proposed in order to develop appropriate metrics. This paper will explore the standards of measurement on the quality assessment of open geospatial data with the purpose of improving information infrastructure in support of scientific inquiries. It will examine some of the existing metrics created for the measurement of geospatial and other types of data, based on which new content and structure have been developed to adjust to the unique features of open geospatial data creation, acquisition, management and use. A well-defined standard on data quality may be applicable to the measurement of other stages and types of open data development, although minor variations may exist.

[What treasure can be uncovered with today's maps?](#) by Matt Ball

The treasure map is the most iconic image when it comes to uncovering wealth through map use. Finding the way to hidden treasure buried in the ground or cached in a mine has a strong romantic appeal, and while a real pirate treasure map has never been documented, the idea of finding hidden wealth with a map will forever endure.

[Back to contents](#)

Source: Sensors & Systems

[Back to contents](#)

Books and Journals (including Videos and Web publications)

[The Fiscal Conservative's Case Against Sprawl](#) – Kaid_Benfield reviews [Thoughts on Building Strong Towns](#) by Charles Marohn

The author believes that urban sprawl is a Ponzi scheme and we the taxpayers are the ones left holding the empty bags.

In fact, the lead chapters of the book are devoted to the Ponzi thesis, whereby municipalities chase outward growth to find new tax revenue that proves insufficient when the infrastructure needs repair; so they chase even more new growth to pay for the previous round, over and over, until the pattern chokes the economic life out of the place.

Source: The Atlantic Monthly "Cities"

[Next Generation Digital Earth](#)

A paper entitled "Next-Generation Digital Earth" was published in the Proceedings of the National Academy of Sciences of the United States of America (PNAS) on 21 June 2012. The paper, meant to be an update of the Digital Earth vision given by Al Gore over ten years ago, reviews progress in Digital Earth scientific discovery, analyses current work, and forecasts future developments.

[Mapping London blog](#)

[Call for Papers: A special issue on geospatial analysis of volunteered geographic information with Computers, Environment and Urban Systems](#)

Volunteered geographic information (VGI)

Submission

Original papers with a length of 6000-7000 words are welcome. To submit your paper, please follow the [journal's](#) Guide for Authors. We encourage authors to consider the option of supplementary data including raw data, derived data and source codes; we particularly encourage authors to pack your supplementary data in such a manner that interested readers can easily replicate your results. Authors must select "Special Issue" while they reach the "Article Type" step in the submission process, and identify the "geospatial analysis of VGI" special issue in their cover letter. First-time users must register themselves as Author.

Important dates:

Paper submission due: 30 December 2012

Acceptance notification: 30 May 2013

Publication: 30 August 2013

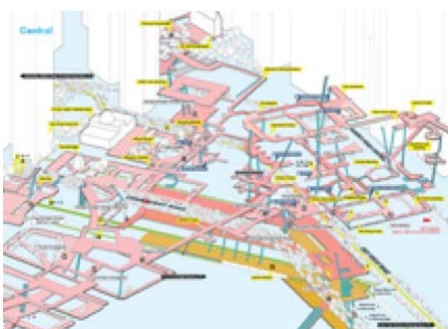
Editors for the special issue:

[Bin Jiang](#), Department of Technology and Built Environment, Division of Geomatics, University of Gävle, Sweden

[Jean-Claude Thill](#), Department of Geography and Earth Sciences, University of North Carolina at Charlotte, USA

[FIG Publication No. 58: Spatially Enabled Society](#)

Joint publication of FIG-Task Force on Spatially Enabled Society in cooperation with GSDI Association and with the support of Working Group 3 of the PCGIAP.



[Cities Without Ground: A Hong Kong Guidebook](#)

Out in September from ORO Editions, considers the city through the lens of these above- and below-ground walkways, creating the first-ever maps showing the extent and variety of these networks.

Co-authored by Adam Frampton, Jonathan D. Solomon and Clara Wong, architects and academics who spent time living and working in Hong Kong, the book comprehensively documents the walkways through highly detailed drawings and 3D models. Mostly visual, it presents a different kind of city guide, showing both how to get around



within these networks and how they've developed and grown despite any formal planning or blueprint.

[Borderlines blog from the New York Times](#)

Countries are defined by the lines that divide them. But how are those lines decided — and why are some of them so strange? Borderlines explores the stories behind the global map, one line at a time.

by Frank Jacobs

Frank Jacobs is a London-based author and blogger. He writes about cartography, but only the interesting bits. His other blog is [Strange Maps](#)

[Thematic Mapping blog](#)

Terrain mapping with Mapnik

Blog of [Ragnvald Larsen, geographer](#)

Geographer working with maps at the Norwegian Directorate for Nature Management. Part of his job is to contribute to development aid projects.

[International Society for Digital Earth](#) - August, 2012 [Newsletter](#)

[Thoughts on the Geospatial industry, Open Standards and Open Source](#) Cameron Shorter's blog

[New Zealand - SDI Cookbook Chapter 6 – Government and Industry, moving forward.](#)

[Carnival Of The Geospatialists #3 - Musings and Down-Right Cool Things Shared by the Geo Faithful](#)

[Open Planet 5, the magazine published for the International gvSIG Conference is now available in electronic format](#)

[SDI Magazine](#)

[Mother Pelican: A Journal of Sustainable Human Development](#)

The January 2012 issue has been posted:

[LiDAR News, Vol 2, No 19](#) (September 2012)

[Think Quarterly](#) – Google's new on-line magazine

[Coordinates](#) monthly magazine - **PDF** (June 2012)

[SERVIR-Africa community news](#)

[GISuser - GIS and Geospatial Technology News](#)

[National Geographic website](#)

[The Atlantic Cities website](#) including [Maps](#)

[Professional Surveyor](#) magazine

[The American Surveyor](#) newsletter (August 29)

[Back to contents](#)

Just for Fun!

[A Map of New York City's Moods](#)

Source: Atlantic "Cities"



[Back to contents](#)



[Nicaragua: No man's land?](#) by David Allen Norris

Two central American nations almost went to war in 1937, over the usual points of conflict. You know: national pride, disputed territory, postage stamps...

Source: Stamp Magazine

[The Legend of the Tsar's Finger](#)

Unable to agree on the best route of the future railway line, they test the patience of the Russian autocrat until it snaps. In exasperation, Tsar Nicholas snatches the map from the dithering technicians, grabs a ruler and draws a straight line between both cities: *Gentlemen, there's your route!* ... The anomaly is also known as the *Tsar's Finger*, because the story goes that Nicholas I stuck out a finger over the ruler, and in his furious impatience, simply drew around it. Since nobody dares to correct a Tsar, especially not an angry one, the railway was built exactly like Nicholas had demanded, bypass included.

Source: "Strange Maps" blog

[Real time map shows planes in the air now](#)

Flightradar24's air maps are updated every couple of seconds. They allow you to track a specific flight across the globe and you can even see the plane's altitude and speed.

Source: Herald Sun and [Flightradar24](#)



[How the Center of the Earth Got a Little Off Kilter](#)

Source: NY Times

[If you thought Apple's maps were weird, look at these](#)

Source: The Guardian



[Back to contents](#)

Training Opportunities

[Course Spotlight: Master of Spatial Information Science](#)

The University of Melbourne [Course Spotlight: Master of Spatial Information Science](#)

Spatial information is an essential and indispensable part of any economy's infrastructure. It is needed in all walks of life and on many scales, with applications in land tenure systems, environmental modelling, food production, disaster management, climate change modelling, engineering, architecture and urban planning. Current industry shortfalls in spatial information practitioners combined with a growing demand in Australia and internationally, ensure graduates a range of well-paid job opportunities.

Find out more about the [Master of Spatial Information Science](#), as well as our [scholarship opportunities](#).

[Learn to Use HTML5 with Esri ArcGIS](#)

Get a brief introduction to HTML5 and learn how to use HTML5 technologies with the ArcGIS API for JavaScript and ArcGIS Online.

Source: GIS User and [ESRI](#)

[Large-Scale 3D Laser Scanning: The Complete Process](#)

Don't worry if you missed the live webinar, "Large-Scale 3D Laser Scanning: The Complete Process". It's now available online for you to watch any time!

[e-Learning for the Open Geospatial Community](#)

We are pleased to inform that the course repository for the ELOGeo (An e-Learning Framework for Using Geospatial Open Data, Open Source and Open Standards) project is ready.

ELOGeo is a JISC-funded project based at the Centre for Geospatial Science, the University of Nottingham in partnership with the Mimas Centre of Excellence at the University of Manchester. ELOGeo main collaborators are Open Source Geospatial Foundation, Open Geospatial Consortium (OGC), Ordnance Survey, Open Nottingham, International Cartographic Association (ICA) and gvSIG Association.

[More details of ELOGeo.](#)

[Back to contents](#)

[gvSIG Training platform opens with a first course for gvSIG users](#)

The gvSIG Association tries to increase its learning offer through online courses, publishing a new learning platform: gvSIG Training. In parallel, the gvSIG Association launches its official certification program. It's a step forward in the training processes in free geomatic, creating an online training centre, that contributes to the spreading as well as to the sustainability of the gvSIG project. Training without geographic barriers, and with the best professionals.

In this platform, you will find courses in several languages to learn to use the different applications of the gvSIG project, in a user level as well as in a developer one. The courses list will be extended gradually with different gvSIG and free geomatic specialization courses (databases, map servers...), with the objective of covering the different needs of the Community.

The courses offered by gvSIG Training are part of the training routes that are required to obtain the gvSIG official certification.

For further information:

- gvSIG Training: <<http://gvSIG-training.com/>>
- gvSIG Certifications: <<http://www.gvsig.com/services/certification>>

GIS Courses by Distance Education

NSW Riverina Tafe

The courses listed below are all full Geographic Information Systems courses which can be studied over a number of semesters by distance study pathways.

[Certificate III in Spatial Information Services \(GIS\)](#)

[Certificate IV in Spatial Information Services \(GIS\)](#)

[Diploma of Spatial Information Services \(GIS\)](#)

Source: [NSW River](#)

[Participatory Spatial Information Management and Communication Training Kit now available on-line](#)

Co-published by CTA and IFAD in English and Spanish, the Training Kit is a unique product that can be tailored to meet user needs, ensuring that employees get the best training available on Participatory Spatial Information Management and Communication.

The online version was launched at the beginning of March 2011. The DVD version was launched in December 2010. The Training Kit contains 15 Modules, each presented through a series of Units. Modules cover the entire spectrum of good developmental practice – from mobilising communities to developing a communication strategy based on the outcome of participatory mapping activities. The Modules touch on topics such as the fundamentals of training, ethics and community groundwork and processes as well as the more technical low-, mid- and high-tech participatory mapping methods.

Users decide what they want to cover and when. The product has been developed using the Multimedia Training Kit (MMTK) approach – which allows you to pick and choose those Modules, Units and components that best suit your particular requirements and develop a curriculum to suit your specific needs.

Publishers: Technical Centre for Agricultural and Rural Co-operation ACP-EU (CTA), Wageningen, The Netherlands and International Fund for Agricultural Development (IFAD), Rome, Italy

Source: [The Centre for Agricultural and Rural Cooperation](#)

[Back to contents](#)

Funding Opportunities, Awards, Grants

[Ideas Challenge](#)

The Ideas Challenge is at the core of the GMES Masters competition. It invites students, entrepreneurs, start-up companies and SMEs to submit their ideas for an innovative commercial use of GMES to a secure online database on the GMES Masters website. The best idea for a commercially viable business idea using GMES data will be rewarded. The winner will be rewarded with a cash prize of EUR 10,000 as well as the chance to get his idea further developed in one of the six ESA Business Incubation Centres (BICs). The incubation package has a value of up to EUR 60,000.

[ESA App Challenge](#)

The European Space Agency (ESA) will award the ESA App Challenge to the best application idea for the usage of GMES on mobile phones. Proposals shall address one or more GMES main thematic areas (land,

[Back to contents](#)

marine environment, atmosphere, climate change, emergency management). ESA is looking for ideas that can be implemented quickly into a profitable business. The application should consist of a base app containing info and news on GMES, as well as one or more specific content modules that provide relevant location-based data to users in real time. The winner will be considered for support by one of the six European Space Agency's Business Incubation Centres (ESA BICs) across Europe (value up to EUR 60,000).

[European Space Imaging High-Res Challenge](#)

European Space Imaging (EUSI) is Europe's leading provider of Very High-Resolution (VHR) satellite data. EUSI will award the best application idea using the most advanced VHR satellite data. Application ideas which are easily implementable, sustainable, cut costs and create efficiencies are of high interest. Participants are required to submit detailed application ideas including business concepts. The winner will be awarded a data package of EUSI satellite data worth up to EUR 20,000 for use in further developing the winning application.

[DLR Environmental Challenge](#)

DLR is looking for new applications in Earth observation, especially proposals addressing the mapping of the environment and climate. Ideas for using Earth observation to manage sustainable supplies of energy are also welcome. In addition to any kind of non-satellite geoinformation, proposals should be based on existing or imminent Earth observation satellite data that is available either for free or under commercial terms. The product or service generated from the idea should support either professionals from organisations and companies in environmental assessment, or the general public and consumer-oriented markets. Both regional and global applications and services are possible. Innovative ways to link the service with users are especially encouraged. The ideas should also describe a realistic scenario for their implementation involving either the general public or commercial benefits. The winner(s) will receive a voucher for a workshop or initial coaching according to what further realisation of the idea requires.

[Best Service Challenge](#)

The Best Service Challenge invites service providers to upload profiles of their existing services within the main thematic areas of GMES to the GMES Masters competition website. The Best Service Challenge aims at increasing the awareness of existing Earth Monitoring Services and their benefits to European citizens. The winner of the Best Service Challenge will benefit from a substantial satellite data quota made available with financial support by the European Commission.

[T-Systems Cloud Computing Challenge](#)

T-Systems will award the prize for its Cloud Computing Challenge to the best GMES application or service idea that will make use of the cloud computing model Infrastructure-as-a-Service (IaaS) to provide Earth observation data on demand via user-oriented web portal or mobile devices. T-Systems will assist the winner in getting the awarded project off the ground. They will support the winner to realise an innovation project, which could lead to a long-term partnership.

[Challenge to spur the geospatial industry](#)

The Singapore Land Authority has launched OneMap Challenge that seeks to promote the development of innovative map-based desktop and mobile applications by businesses and the community.

The OneMap Challenge provides a platform for application developers to showcase their creativity through the apps they develop to an increasingly tech-savvy population and enterprises, including those represented by the Association of Small and Medium Enterprises (ASME) which is one of the competition promotion partners. The Challenge also aims to facilitate collaborations between potential business partners for creating location-based apps that are useful for business enterprises and the general community.

With two top prizes of \$20,000 cash each and other attractive prizes up for grabs, the OneMap Challenge is divided into two categories – Web Applications for applications that run on web browsers and Mobile Applications for those that run on smart phones, tablets and other portable devices.

Visit <http://www.sla.gov.sg/OneMapChallenge> to learn more about OneMap Challenge and check out the OneMap Facebook page at www.facebook.com/OneMap.

Source: Geospatial World and [SLA press release](#)

Employment Opportunities

'Surveyors are getting lucrative offers in Vietnam'

Viet Nam government is investing approximately USD 60 million in cadastral mapping. Prof. Dr. Dang Hung Vo explains what it means for surveyors.

Source: Geospatial Wworld

GIS Job Board Launches New Website: www.gisjobboard.com

New Site Provides Employers and Job Seekers Tools to Post and Search Jobs and Resumes in the GIS and Geospatial Disciplines

GIS Job Board has launched a new website specifically dedicated to GIS and other geospatial disciplines. The new site makes it simple for employers and job seekers to post and search for jobs and resumes. The site was created to serve the growing needs of the GIS community and help with recruiting and job seeking efforts. Visitors also have the option to view the site in a different language if they choose, making it easier for them to have access to the content

Registered users can receive jobs or resumes by email. They can also flag jobs and resumes as well as save searches, setup resume alerts, and save resumes and jobs. Users have the capability of private messaging other users in case they ever want to communicate with someone.

For more information about GIS Job Board, please visit their website at www.gisjobboard.com

[Back to contents](#)

Conference Proceedings

The 4th Digital Earth Summit Concludes in Wellington, New Zealand

The fourth bi-annual Digital Earth Summit was held in Wellington, New Zealand from Sept. 2-4, as one in a series of summits organized by the International Society for Digital Earth (ISDE). The summit with the theme "Digital Earth and Technology" was co-hosted by Wellington City Council and Land Information New Zealand. There were three streams that included the digital environment, resilient cities, and growing up digital. There were 15 keynote speeches and 75 presentations, attracting around 200 delegates from more than 20 countries.



FIG Working Week 2012 Rome May 6 – 10, 2012
[Technical Program and Proceedings](#)

GSDI 13 QUEBEC CONFERENCE A HUGE SUCCESS **May 14 – 7, 2012**

A limited-edition book of selected papers "Spatially Enabling Government, Industry and Citizens: Research and Development Perspectives" was provided free of charge to all conference registrants. Abstracts and Papers from the Conference may also be downloaded from the [GSDI Association's website](#).

7th International Conference on 3D Geoinformation, 16–17 May 2012, Québec, Canada

Report on GI Science and Remote Sensing for Climate Change Studies Workshop

Kumaun University SSJ Campus Almora, India from 1-3 March 2012.

Malaysia Geospatial Forum 2012

[Day 1](#) (March 6), [Day 2](#) (March 7), [Plenary showcases g-tech in nation building](#)

Open Planet 5, the magazine published for the [International gvSIG Conference](#) is now available in electronic format

[Back to contents](#)

Conferences, Events

For upcoming events of global or major international interest, please visit the [upcoming conference list](#) on the GSDI website – as this conference list will be reserved for conferences within or with specific interest to the Asia Pacific Region.

The editors welcome news of conferences & events from the newsletter subscribers

[Call for Expression of Interest to host AARSE 2014 and future Conferences](#)


Call for Expression of Interest to host the 10th biennial International Conference of the African Association of Remote Sensing of the Environment (AARSE) in October 2014 and future Conferences. The 9th conference will be held in Morocco in October 2012.

Date	Location	Event
October 2012		
2-4 October –	Gauteng, South Africa	<p>Call for papers for the peer-reviewed academic track of GISSA Ukubuzana 2012</p> <p>Conference theme: 'An African Dialogue: Geomatics for Infrastructure Development and Service Delivery'</p> <p>Authors are invited to submit full-text academic papers, approximately 5000 words in length and relevant to the themes and subject matter of the conference, for the peer-reviewed academic track at the GISSA Ukubuzana 2012 conference.</p> <p>Important dates</p> <ul style="list-style-type: none"> • 30 June 2012: Submission of full papers for peer-review for academic track • 13 August 2012: Notification of acceptance of papers for academic track • 10 September 2012: Submission of revised peer-reviewed full papers for academic track • 17 September 2012: Registration of presenters of accepted papers for academic track • 25 September 2012: Submission of PowerPoint presentations for conference CD • 2-4 October 2012: GISSA Ukubuzana 2012 in Kempton Park, Gauteng, South Africa <p>Instructions to authors of peer-reviewed academic papers.</p> <p>Conference brochure (1 MB pdf)</p>
16-20 October	Ho Chi Minh City, Vietnam	<p>GIS-IDEAS 2012 International Conference, 2012</p> <p>The International Conference on GeoInformatics for Spatial-Infrastructure Development in Earth & Allied Sciences (GIS-IDEAS) is jointly organized by Japan-Vietnam Geoinformatics Consortium (JVGC), Ho Chi Minh City University of Technology (HCMUT) and Ho Chi Minh City Institute of Resources Geography (HCMIRG), and will be held at HCMUT.</p>
24-26 October	Beijing	<p>The 4th International Conference on Remote Sensing in Archaeology (ICRSA4) with the theme: "New Era of Earth Observation on Natural and Cultural Heritage".</p>
29 October – 2 November	El Jadida, Morocco	<p>10th biennial International Conference of the African Association of Remote Sensing of the Environment (AARSE)</p>
29 October – 2 November	El Jadida, Morocco	<p>AARSE 2012 Conference: Call for Side-event Workshops</p> <p>As you might be aware the AARSE 2012 Conference will take place from October 29 to November 2, 2012 in El Jadida, Morocco. This 9th holding of the AARSE Conference represents a major event in the long series of internationally recognized AARSE conferences.</p> <p>Note: Please be aware that the following policy of the AARSE</p>


[Back to contents](#)

		<p>Executive Council on workshops organized by other parties applies:</p> <ul style="list-style-type: none"> - Organizers of a pre-/concurrent-/post-conference workshop must pay a fixed amount of €3000 to cover expenses for projector, venue, writing materials and microphone. Anything extra is to be borne by the workshop organizer. However, organizers of a pre-/concurrent-/post-conference workshop who pay the conference registration fee for 8 of their participants, 2 months prior to the conference date, pay a fixed amount of €1500 to cover costs of projector, venue, writing materials and microphone. <p>Abstract submission CLOSED 30 April 2012</p> <p>.....</p> <p>AARSE AWARDS - All presenters are invited and encouraged to enter the AARSE award-winning competition for best paper presentation and best poster.</p> <p>IEEE GRSS/AARSE TRAVEL FELLOWSHIPS - To support travel costs, accommodation and registration fees to attend conferences of the two societies in the field of Earth observation by remote sensing. The beneficiaries of these conference fellowships shall be African scientists or students who have their paper accepted for oral or poster presentation at the AARSE biennial conference.</p>
29 October – 2 November	Bangkok, Thailand	<p><u>19th United Nations Regional Cartographic Conference for Asia and the Pacific</u></p> <p>The primary objective of the Conference is to provide a regional forum where government officials, scientists and experts from Asia and the Pacific and other regions meet to address the common needs, problems and experiences in the interrelated fields of surveying, geography, cartography and mapping, hydrography, remote sensing, land/sea and geographical information systems and environmental protection, including educational and training aspects, scientific and technological requirements, implementation issues and benefits.</p>
November 2012		
13–5 November “NEW”	UNSW, Sydney, Australia	<p><u>3rd International Conference on Indoor Positioning and Indoor Navigation (IPIN)</u></p> <p style="text-align: right;"><u>Contact</u></p>
19–22 November “NEW”	London, UK	<p><u>World Congress on Sustainable Technologies (WCST-2012)</u></p> <p>Technical Co-Sponsored by IEEE UK/RI Section Paper Submission: To submit a paper, <u>please visit</u>.</p> <p>Important Dates: Full Paper Submission Date: September 20, 2012 Extended Abstract (Work in Progress) Submission Date: September 30, 2012 Proposal for Workshops and Tutorials: August 31, Notification of Workshop and Tutorial Acceptance: September 10, Proposal for Industrial Presentation / Special Track: August 31, Notification of Abstract Acceptance/Rejection: October 10, Notification of Industrial Presentation / Special Track Acceptance: September 10, Notification of Paper Acceptance/Rejection: October 01, Camera Ready Extended Abstract Due: October 19, Camera Ready Paper Due: October 19, Early Registration Deadline: August 01, 2012 - October 15, 2012 Late Registration Deadline: October 16, 2012 - November 01, 2012 Conference Dates: November 19-22, 2012.</p>
20-3 November	Canberra, Australia	<p><u>spatial@gov® Conference and Exhibition 2012</u></p> <p>Call for Papers - Deadline for Submissions: 5pm Tuesday 7th August 2012 - <u>Contact</u></p>

[Back to contents](#)

27-30 November "NEW"	Suva, Fiji	<p>2012 Pacific GIS & RS Conference Abstract deadline: September 30, 2012 Flyer</p> <p>The theme for this year is "Mapping Pacific Resources", which is timely as the recently concluded Rio +20 United Nations conference noted the relevance of global mapping and recognised the value of reliable geospatial information for sustainable development and decision-making. The global conference further recognised the need to support developing countries in their efforts to collect resource and environmental data.</p> <p>As with previous Pacific GIS & RS conferences, there are no fees levied for those wishing to attend, and the conference is funded entirely by donations from regional organisations, technology vendors and international agencies. This year, Deutsche Gesellschaft für Internationale Zusammenarbeit (GIZ) GmbH will support the Conference. GIZ will sponsor selected presenters from Tonga, Vanuatu and Solomon Islands to participate in the conference. To qualify, the presented topic should be related to forestry, agriculture or environmental application of GIS/RS, which is automatically linked to climate Change thematic. The deadline for abstract submission is 30th September, and final selection would require additional submission of the actual presentation upon request. For further information and registration.</p>
28-30 November	Valencia, Spain	<p>8th International gvSIG Conference "Making the Future: Technology, Solidarity and Business". Call for papers is now open. As of today communication proposals can be sent to the email address; they will be evaluated by the scientific committee as to their inclusion in the conference program. There are two types of communication: paper or poster. Information regarding to regulations on communication presentations can be found in the Communications section. Abstracts will be accepted until September 28th. Organizations interested in collaborating in the event can find information in the section: How to collaborate.</p>
December 2012		
9-10 December "NEW"	Kuala Lumpur, Malaysia	<p>Asia Oceania Regional Workshop on GNSS</p> <p style="text-align: right;">Contact</p>
February 2013		
11-3 February	Denver, USA	<p>International LiDAR Mapping Forum (ILMF) Call for Papers and invites any interested parties to submit their abstracts by September 28, 2012 online. Contact</p>
March 2013		
18-9 March "NEW"	Singapore	<p>1st Annual International Conference on ACE: Call For Papers 2013 IMPORTANT DATES Full Paper Submission Deadline: 23rd November 2012 Author Notification: 7th December 2012 Final Paper (Camera-Ready) Submission Deadline: 31st December 2012 Early Bird Registration Deadline: 18th January 2013 Late Registration Deadline: 13th February Contact</p>
April 2013		
15-9 April "NEW"	Canberra, Australia 	<p>Surveying & Spatial Sciences Conference 2013 <i>Call for Papers extended to 6 October 2012</i></p>
22-26 April	Beijing, China	<p>35th International Symposium on Remote Sensing of Environment (ISRSE35)</p>

[Back to contents](#)

<p>“AMENDED”</p>		<p>The papers included in the 35th International Symposium on Remote Sensing of Environment proceedings will be published by IOP Publishing Ltd., UK. The proceedings are available through the IOP Conference Series: Earth and Environmental Science. All published papers will be indexed by EI Compendex. Authors interested in the themes and topics of ISRSE35 are welcome to submit their original manuscripts. Submissions to ISRSE35 will be peer-reviewed to ensure high-quality scientific content and well-written English, in accordance with the Peer Review Policy for the IOP Conference Series.</p> <p>ABSTRACT SUBMISSION</p> <p>Interested contributors should submit a summary of the paper they propose for presentation.</p> <ul style="list-style-type: none"> • All submissions should be in English. • Abstracts should reach the Technical Programme Committee no later than 30 September 2012. • Notification of paper acceptance will be made by 10 December 2012. • Each presenting author will be required to register and pay by the author registration deadline on Monday, 25 February 2013, to ensure their abstract is included in the final programme. • Please submit abstracts through the Abstract Submission link at http://www.isrse35.org • All abstracts must be submitted online. <p>IMPORTANT DATES:</p> <p>Registration Opens: Monday, 10 September 2012 Abstract Submission Deadline: Sunday, 30 September 2012 Workshop Submission Deadline: Tuesday, 30 October 2012 Acceptance Notification Monday, 10 December 2012 Early-bird Registration Deadline: Friday, 25 January 2013 Final Paper Deadline: Friday, 15 February 2013 Author Registration Deadline: Monday, 25 February 2013 Standard Registration Deadline Monday, 15 April 2013</p> <p>Contact detail: ISRSE35 Secretariat E-Mail: isrse35@ceode.ac.cn Tel: +86 10 8217 8969 Fax: +86 10 8217 8968 Website: www.isrse35.org Address: Center for Earth Observation and Digital Earth, CAS No. 9 Dengzhuang South Road, Haidian District, Beijing 100094, P.R. China</p>
May 2013		
<p>6-10 May</p> <p>“NEW”</p>	<p>Abuja, Nigeria</p>	<p><u>The FIG Working Week</u></p> <p>The Working Week will bring surveyors and land professionals from all over the world together to meet while specific focus will be given to Africa. The conference is organised jointly by FIG and the Nigerian Institution of Surveyors, NIS, one of the three FIG member associations in Nigeria.</p>
<p>13-6 May</p>	<p>Rotterdam, The Netherlands</p>	<p><u>Geospatial World Forum</u> is a conference cum exhibition which has always invoked the geospatial community with its relevant and thought-provoking themes. This year, the conference which is scheduled from 13-16 May 2013 at Beurs World Trade Center, Rotterdam, The Netherlands aims at increasing our understanding of the concept of Monetising the value added by geospatial industry so far with its theme “Monetising Geospatial Value and Practices”. Please submit your abstracts. For queries.</p>

[Back to contents](#)

		Important Dates - <table border="1" style="width: 100%;"> <tr> <td>Abstract Submission</td> <td>15 October 2012</td> </tr> <tr> <td>Abstract Acceptance/Non Acceptance Notification</td> <td>04 November 2012</td> </tr> <tr> <td>Speaker Registration</td> <td>15 December 2012</td> </tr> </table>	Abstract Submission	15 October 2012	Abstract Acceptance/Non Acceptance Notification	04 November 2012	Speaker Registration	15 December 2012
Abstract Submission	15 October 2012							
Abstract Acceptance/Non Acceptance Notification	04 November 2012							
Speaker Registration	15 December 2012							
August 2013								
26-29 August	Kuching, Sarawak, Malaysia	<u>The 8th International Symposium on Digital Earth (ISDE8)</u> with the theme of "Transforming Knowledge into Sustainable Practice" will be held in Kuching, Sarawak, Malaysia.						
November 2013								
4-8 November "NEW"	Addis Ababa, Ethiopia	<u>GSDI 14 and AfricaGIS 2013:</u> The GSDI Association, EIS-Africa, the International Geospatial Society, and the United Nations Economic Commission for Africa (UNECA) are pleased to announce a close partnership in offering the joint GSDI 14 World Conference and AfricaGIS 2013 Conference. The theme of the conference is Spatially Enabling Africa in Support of Economic Development and Poverty Reduction.						
2014								
	Malaysia	Malaysia will be hosting the (International Federation of Surveyors) FIG Congress in 2014. The decision was taken at the recently concluded FIG Congress 2010 in Sydney, Australia.						

To subscribe to SDI-AP, please do so [online](#). To contact please [email](#) the editors. [Global Spatial Data Infrastructure Association](#).

Please mention SDI-AP as a source of information in any correspondence you may have about items in this issue.

DISCLAIMER: The Editor and Web Host will not be held liable for any errors, mistakes, misprints or incorrect information.

Copyright © 2011. All rights reserved.

