

Global Spatial Data Infrastructure Latin America and the Caribbean Newsletter

SDI-LAC

August

2013

Vol. 10, No.8

Spatial Data Infrastructure-Latin America and the Caribbean (SDI-LAC) is a regional, monthly, and free, electronic newsletter from the [Global Spatial Data Infrastructure Association](#) (GSDI). It focuses on aspects related with Spatial Data Infrastructure, and on GIS, remote sensing, and data management issues, related with SDI in Latin America and the Caribbean. It aims to raise awareness, provide useful information to strengthen national SDI initiatives, and support synchronization of regional efforts.



[GSDI Definition](#)

The [Pan-American Institute of Geography and History](#) (PAIGH), member organization of GSDI, and the [Permanent Committee on Geospatial Data Infrastructure for the Americas](#) (PC-IDEA), promote SDI development in the region. The newsletter is prepared by PAIGH for GSDI.

[Message from the Editor](#)

[Input to this Issue](#)

[Global and Regional SDI, News, Presentations](#)

[IGS News, Links, Publications](#)

[National SDI, News, Links, Presentations](#)

[Articles and Publications of the Month](#)

[Geospatial Research, Applications, Software, Data](#)

[Training and Funding Opportunities, Awards](#)

[Employment Opportunities](#)

[Other](#)

[Americas: Conferences, SDI Events](#) (Year [2013](#) and [2014](#))



Message from the Editor

This SDI-LAC number highlights the following contributions: The **Global and Regional SDI** section comprises updates on the GSDI 14 / AfricaGIS 2013 Conference; the G8 leaders' signature of Open Data Charter; the 10th United Nations Regional Cartographic Conference for the Americas; the OGC ILAF Corner; and relevant Conferences taking place worldwide. The **IGS section** includes comments on IGS Membership Renewal. The **National SDI** segment informs on the 8th IDERA Conference, Argentina; and The National Report of Mexico, and Country Report of Suriname, both submitted to the 10th UN Regional Cartographic Conference for the Americas. **Articles and Publications** of the month include an article on the update to the US NSDI Strategic Plan; The COBRA Project new multimedia resources and publications; and Call for abstracts to Andean communities in the face of global change at the Resilience 2014 Conference. **Geospatial Research and Applications** underline the launching of GIS for Human Settlements (SIGAH) of Mexico (Querétaro); A Mobile Mapping initiative to create a Road Map of Brazil; An application of Climate Forecasts to Warn of Crop Failures; GPS Revealing Hurricane Wind Speeds; The First Atlas on Oceanic Plankton; Nature as best defense against catastrophic storms; and gvSIG 2.0 new extension for automatic creation of map series. The **Training and Funding Opportunities** section encompasses calls for national and international initiatives, among them, the International Course on Management and Applied Techniques in Cartography to be held in Spain; and a Webinar

Demonstration of Marine Valuation Databases. Finally, several **Events taking place in the Americas** are listed in the last section.

Translation of SDI-LAC Portuguese is possible thanks to undergrad students from UNESP **Mateus de Barros Manhani** and **Esrom A. Rissate Júnior**, from UFPE **Caroline Martins** and the cartographic engineers: **Alexandre Scussel**, editorial assistant MundoGEO. **Annette Pic**, MSc in Remote Sensing; **Camila Bassetto Guedes**, advisor of the Operations Department of the DECEA; **Edilce Figueiredo Burity**, Technologist of IBGE/PE Geographic Information and Statistics; **Edmilson Martinho Volpi**, Natural Resources Secretary in SP; **Eduardo Freitas**, editor of the MundoGEO portal and magazine; **Flávio Porfírio**, UGP-Dam of the ITEP; **Juan Carlos Gironda Mamani**, a consultant in Geotechnology and IT solutions for Geoinformation; **Rodrigo Quirino** Technologist of IBGE/RJ Geographic Information and Statistics; **Silvana Camboim** Professor at UFPR; **Silvane Paixão**, PhD in Land Administration and Land Information Management. Under the general coordination of Silvane Paixão and review of Eduardo Freitas.

Back issues of the newsletter are at the GSDI website: <http://www.gsdi.org/newsletters.asp>
Editor, **Nancy Aguirre**, Pan-American Institute of Geography and History (PAIGH), <http://www.ipgh.org>, cnaguirre@ipgh.org

[\(Back to top\)](#)

Global Spatial Data Infrastructure Latin America and the Caribbean Newsletter

Input to this Issue

Thanks for their contributions to this SDI-LAC Newsletter issue to:

Santiago Borrero	Secretary General, Pan-American Institute of Geography and History, PAIGH, Mexico
Arturo Brun-Martinez	Architect, Colombia
Joan Capdevila-Subirana	Regional Service of the National Geographic Institute in Catalunya, Spain
Sarah Carr	Network Coordinator, Ecosystem-Based Management Tools Network, NatureServe, Arlington, USA
Kate Lance	GSDI listserv moderator, USA
Roger Longhorne	Communications Director, GSDI Association
Jay Mistry	Coordinator of COBRA, Senior Lecturer in Geography, Department of Geography, Royal Holloway, University of London, UK
Doug Nebert	Information Architect and Lead Technologist, FGDC, USA
Joshua Newell	Assistant Professor, School of Natural Resources and Environment, University of Michigan, USA
Maribel Yasmina Santos	External Officer for AGILE Secretary, Association of Geographic Information Laboratories in Europe
Imma Serra	National Geographic Information Center, National Geographic Institute, Spain
Raquel Serrano-Calvo	Coordinator IC_Cartotechnology, Spain
Diana Sietz	Geo-Ecologist, Rural Development Sociology, Wageningen University and Research Centre, Wageningen, The Netherlands
Claudia Stormoen	FIG Office and Events Coordinator, International Federation of Surveyors, Copenhagen, Denmark

[\(Back to top\)](#)

Global and Regional SDI, News, Presentations

AfricaGIS 2013

GSDI 14



UNECA Conference Center, Addis Ababa, Ethiopia
November 4-8, 2013

GSDI 14 / AfricaGIS 2013 Conference Update

Source: GSDI and IGS Global News, Volume 3 Number 6 for 2013

(This news in PDF format is available under <http://www.gsdi.org/newsletters#GSDI> or directly at http://memberservices.gsdi.org/files/?artifact_id=1296)

The Global Geospatial Conference 2013 - the joint GSDI 14 World Conference and AfricaGIS 2013 Conference - is being held in Addis Ababa, Ethiopia, at the UN Economic Commission for Africa (UN ECA) Conference Center, 4-8 November 2013. Organizers and hosts of the conference include the GSDI Association, EIS-Africa, the UN ECA, EiABC - Addis

Global Spatial Data Infrastructure Latin America and the Caribbean Newsletter

Ababa University, and the International Geospatial Society. The conference theme is “Spatial Enablement in Support of Economic Development and Poverty Reduction”.

The Conference organizers are pleased to announce that there will be an official launch session for the AfriGEOSS initiative on the second day of the conference, Tuesday, 5 November, at a special plenary session, with a cocktail reception to follow that evening at the UNECA. Watch the conference website at www.gsdi.org/gsdi14/ for more information!

Abstracts for Oral Presentations

All abstracts submitted for oral presentations have now been reviewed by the committee, as well as those papers submitted for consideration in the published book that will follow the conference, and results were notified to the authors on 2 July. We look forward to a very full and interesting round of presentations on a wide range of topics relating to GIS, geomatics and SDI implementation in Africa and across the globe. In all, 252 submissions have been selected for presentation, from 53 countries. The geographic coverage is as follows:

Africa – 22 countries – 138 abstracts
Asia-Pacific – 8 countries – 19 abstracts
Europe – 16 countries – 60 abstracts
Middle East – 1 country – 1 abstract
North America – 2 countries – 29 abstracts
South America and the Caribbean – 4 countries – 5 abstracts

Conference registration is now open on the conference website at www.gsdi.org/gsdiconf/gsdi14/register.html. The early-bird registration period ends on **15 September**. A substantial reduction in registration fees is available for local participants, members of EIS-Africa and members of the International Geospatial Society (IGS) who are from low income per capita nations. It is not too late to become a member of the IGS – visit <http://www.igeoss.org/join> to join today!

Important Conference Links

- Conference Website: <http://www.gsdi.org/gsdi14>
- Conference Registration: <http://www.gsdi.org/gsdi14/register.html>
- Past GSDI World Conference Proceedings: <http://www.gsdi.org/gsdiConferences>
- Past open access Books affiliated with the conference: <http://www.gsdi.org/openaccessbooks>
- Other Important Dates: <http://www.gsdi.org/gsdiconf/gsdi14/dates.html>

G8 Leaders Signed the Open Data Charter

Source: Roger Longhorne

The Open Data Charter sets out 5 strategic principles that all G8 members will act on. These include an expectation that all government data will be published openly by default, alongside principles to increase the quality, quantity and re-use of the data that is released. G8 members have also identified 14 high-value areas – from education to transport, and from health to crime and justice – from which they will release data. These will help unlock the economic potential of open data, support innovation and provide greater accountability. Get the documents here: <https://www.gov.uk/government/publications/open-data-charter>



Global Spatial Data Infrastructure Latin America and the Caribbean Newsletter

10th United Nations Regional Cartographic Conference for the Americas

Source: Kate Lance



The United Nations Regional Cartographic Conference for the Americas (UNRCC-A) provides a regional forum where government officials, planners, scientists and experts from the Americas and other regions meet to address their common needs, problems and experiences in the field of surveying and mapping, cartography, hydrography, remote sensing, land and geospatial information systems. The 10th Conference is being held from August 19 to 23, 2013 at the UN headquarters in New York under the theme United Nations initiative on Global Geospatial Information Management (UN-GGIM) and the Americas, addressing global challenges through geospatial information. Specific conference objectives are:

- To receive reports on the work being done to advance geospatial information management and assess the status of the resolutions adopted at the Ninth United Nations Regional Cartographic Conference for the Americas.
- For conference delegates to share experiences, knowledge and best practices on geospatial information management (GIM) at all levels;
- For representatives from Member States to gain greater understanding of the relevance and work of the UN-GGIM Committee of Experts, GIM issues being addressed in addition to the strategic direction and related program of work;
- To elect and welcome the new members of the governing body for the Americas and
- For Member States and supporting stakeholders to identify existing and new opportunities for increased regional and global collaborations aimed at advancing GIM for sustained economic development of the Americas.

Technical papers and Country Reports may be found in the Conference webpage at: <http://unstats.un.org/unsd/geoinfo/RCC/unrcca10.html>. The conference will begin on Monday 19th August, 2013 with an opening session followed by administrative formalities. This will be followed by the delivery of reports on the Resolutions of the 9th UNRCC-A and Permanent Committee for Geospatial Data Infrastructure of the Americas (PC-IDEA). The technical conference begins in the afternoon with an important session on UN-GGIM and the Americas.

OGC ILAF Corner - July 2013

Source: Imma Serra and Joan Capdevila- Subirana

Did you know ...

The Web Processing Service (WPS) standard allows to define geoprocessing utilities, that is, any algorithm, calculation or model that operates on referenced data. With the WPS interface it is possible to define the input and output data, the execution mode of the process, and how to access the information being processed. A WPS may offer calculations services as simple as subtracting one set of georeferenced numbers (eg. Determining the difference in influenza cases between two different seasons) or as complicated as a calculation of remote sensing image processing. And just like other web service standard, WPS service is defined by the following operations:

- *GetCapabilities*: Service description and list of available operations.
- *DescribeProcess*: Describes the input and output parameters of available operations and processes
- *Execute*: A request that allows execution of a process.

The following link is a description of the [WPS specification version 1.0](#) with some examples.



Global Spatial Data Infrastructure Latin America and the Caribbean Newsletter

OGC News

27/06: OGC published the discussion paper WaterML 2.0 Part 2: Ratings, Gaugings and Sections [link](#)

09/07: OGC requests comments on the OWS Context Encoding standard [link](#)

15/07: OGC Calls for Participation in Major Interoperability Testbed [link](#)

17/07: The OGC requests comments on proposed working group to develop Earth Observation extension to OpenSearch [link](#)

23/07: The OGC requests comment on the Processing Extension to the OGC Web Coverage Service Interface Standard [link](#)

More on OGC at the OGC Iberian and Latin American Forum [Webpage!](#)

iConference 2014: Breaking Down Walls: Culture-Context-Computing

Source: Maribel Yasmina Santos by way of Santiago Borrero

Submissions are now being accepted for iConference 2014, the ninth annual gathering of scholars, researchers and professionals who share an interest in the critical information issues of contemporary information society. iConference will take place on March 4-7, 2014, in Berlin, Germany. The four days will include peer-reviewed Papers, Notes, Posters, Workshops and Sessions for Interaction and Engagement. Also offered are a Doctoral Student Colloquium and an Early Career Colloquium. Authors and organizers can now submit materials using the secure submissions website: <https://www.conftool.com/iConference2014/>. The official proceedings will be published in the open access Illinois Digital Environment for Access to Learning and Scholarship (IDEALS). iConference 2014 is presented by the iSchools organization and hosted by The Berlin School of Library and Information Science at Humboldt-Universität zu Berlin. More at: www.ischools.org



Important links

* Call for Participation: <http://ischools.org/the-icongress/call-for-participation/>

* Facebook: IConference

* Twitter: @iConf | #iconf14

Submission deadline: **15 August** 2013, 23:00 GMT. More at <http://ischools.org/the-icongress/>

FIG Congress 2014, Kuala Lumpur, Malaysia – Call For Papers

Source: Claudia Stormoen by way of Santiago Borrero



Global Spatial Data Infrastructure Latin America and the Caribbean Newsletter

The XXV FIG International Congress 2014 which will be held in Kuala Lumpur, Malaysia from 16th to 21th June 2014. The Congress is hosted by the International Federation of Surveyors (FIG) and the Association of Authorised Land Surveyors Malaysia (PEJUTA) as the local host. The main partners of this Congress are the partnering agencies and bodies of United Nations and the World Bank, allied international and regional professional and non-governmental organizations are also supporting this FIG Congress in 2014. The overall theme of the Congress is “Engaging the Challenges - Enhancing the Relevance”. There is a specific reason for choosing this theme. A wise man once remarked, “In every Failure, therein lies the Seed of Achievement”; we share the opinion that “In every Challenge, therein lies the Seed of Enhancing Relevance” for Surveyors across the Globe, who have been diligently enhancing skills and knowledge, whilst exploring new technological platforms to deliver quality services, and contributing to the nation building success of their respective countries. The technical programme will include a broad professional and scientific programme: during 4 consecutive days, offering up to 10 parallel sessions and workshops. This will allow more than 700 presentations in the entire broadness of the surveying profession. The carefully prepared Technical Programme will offer both specially invited high profile presentations and papers that are selected through the open call for papers procedure. This Call for Papers is announced both for peer review papers and non-peer review papers. We invite you to submit abstract and full paper for peer review paper by **1 November** 2013 and abstract for non-peer-review paper by **1 December** 2013. Please use this link <http://www.fig.net/fig2014/submission.htm>. Submission of abstract will open end of August 2013. You will find more information on the conference website www.fig.net/fig2014. At this stage we do not have all information needed but the website is continuously updated.

FIG Commission 7 Annual Meeting: It has been launched the website for Commission 7 Annual Meeting which will take place in Cameroon from 21st to 25th of October 2013.

Please visit the website and book your package. <http://fig2013-c7.jimdo.com/>

2014 Global Land Project Open Science Meeting

Source: Joshua Newell



The Meeting will be held on March 19 - 21, 2014 in Berlin, Germany (www.glp-osm2014.org) under the theme “Land transformations: between global challenges and local realities.” The 2014 [Global Land Project Open Science Meeting](http://www.glp-osm2014.org) program will be a combination of plenary sessions involving international figureheads and experts in the field, followed by parallel sessions covering a wide range of topics within the broad themes of the conference. In addition, poster sessions will take place during lunchtimes and early evenings. The list of sessions is available on: http://www.glp-osm2014.org/conference_sessions.php. For more information about the Conference Sessions please go to the conference website: <http://www.glp-osm2014.org/>

[\(Back to top\)](#)

Global Spatial Data Infrastructure Latin America and the Caribbean Newsletter

IGS News, Links, Publications



International
Geospatial Society



IGS Reminders – Membership Renewal

Source: News from the GSDI Association and the International Geospatial Society, Volume 3, Number 1, 2013

It is time to renew your membership in the International Geospatial Society (IGS). As a member you played a vital role in making the past year a great success.

Activities and Benefits

The International Geospatial Society (IGS) is the global society for geospatial specialists who want to affiliate with, help support, learn from and communicate with peer professionals across the world. Without the base financial support and volunteered personal time and effort of members the numerous activities in which IGS engages would not be possible. See a description of member benefits and the range of activities in which members have been engaged at <http://www.igeoss.org/BenefitsOfJoining>.

In terms of new initiatives, the organization was able to implement a program to allow geospatial specialists in developing nations to provide services in lieu of dues. Those services consist of providing or updating each year a personal professional profile in the geographic knowledge network. This effort has provided a much broader geographic distribution of representation in the organization. See the full list of members at <http://www.igeoss.org/members>.

We also expanded publication of GSDI and IGS Global News so it comes to you through email on a regular basis. The organization continues to advocate open access to geospatial conference proceedings, books, learning materials, newsletters and standards across global geospatial organizations to ensure that all are able to benefit from the resources being developed.

Submitting your Dues or Maintaining Free Membership

In order to renew your membership, please go to <http://www.igeoss.org/join> and pay the dues of \$US50 by credit card (\$25 for students). Dues payment is available only through use of a credit card. In the event that you are a citizen of and live within a qualifying economically disadvantaged nation, the online membership application at <http://www.igeoss.org/join> will provide you with the option of applying for free membership in IGS. The primary obligation is to provide the URL link to your professional profile in the GIKNetwork.

Information provided by Marilyn Gallant, GSDI Business Manager (mgallant@gsdi.org).

[\(Back to top\)](#)

Global Spatial Data Infrastructure Latin America and the Caribbean Newsletter

National SDI, News, Links, Presentations

ARGENTINA

8th IDERA -1st Call Now Available

Source: IDERA Subscriptions



First Call is now available for the 8th IDERA Conference that will be held on November 7-8, 2013 in the city of Bariloche, Province of Rio Negro, Argentina. [Call for participation](#). These events are intended to bring specific cases of SDI-principles and technology applications to the Spatial Data Infrastructure of the Republic of Argentina (in Spanish IDERA) community. Priority will be given to governmental and scientific experiences with regard to education, production and services, and citizen participatory approaches or development of geospatial content. Experiences of users of information and services made available through SDI for: solving complex problems, making multivariate analysis, using different sources and / or that require periodical updates will also be included. Deadline for abstracts (200 words) is **September 9, 2013**: these may be sent to jornadas@idera.gob.ar. Online registration is now available at: www.idera.gob.ar.

MEXICO

[Mexico National Report Submitted to the Tenth United Nations Regional Cartographic Conference for the Americas](#)

By the Department of Geography and the Environment, INEGI

Source: <http://unstats.un.org/>



Excerpts from the Introduction by the author: In accordance with the amendment to the Articles 26 and 73 of the Constitution of the United Mexican States, published in the Official Journal of the Federation (DOF) on April 7, 2006, the Mexican State must have a National System of Statistical and Geographical Information (in Spanish SNIEG). In order to regulate those amendments, on April 16, 2008 it was published in the DOF the Law of the National System of Statistical and Geographical Information (in Spanish LSNIEG), which establishes general provisions to constitute and organize SNIEG as well as for the INEGI (National Institute of Statistics and Geography) to count with technical and managerial autonomy, legal mandate and own assets, as to be responsible for regulating and coordinating this System. Thus, the SNIEG, -understood as the set of units organized through subsystems, coordinated by the Institute and articulated by the National Information Network- produces and disseminates information of national interest through four subsystems: 1. Demographic and Social 2. Economic, 3. Geographic and Environmental, and 4. Government, Public Safety and Justice Administration. [The full report may be found at: http://unstats.un.org/unsd/geoinfo/RCC/docs/rcca10/IP/E%20Conf_103_IP.2_Reporte_Mxico-20Jun2013.pdf]

Global Spatial Data Infrastructure Latin America and the Caribbean Newsletter

SURINAME

[Country Report of Suriname to the Tenth UN Regional Cartographic Conference of the America`s](#)

Prepared by Hein Raghoobar.

Source: <http://unstats.un.org/>

Introduction by the author: Suriname participates since 2009 (formerly in 1986) active in the UNGEGN, SDI, GGIM and UN Spider in Switzerland. Participations in conferences aim capacity building, and institutional strengthening. This report provides an overview of the status of the Spatial Data Infrastructure of Suriname, status of the Geodesy System of Suriname (the Global Geospatial Information Management) climate change related disasters in Suriname and the Standardization of the Geographical Names of Suriname for the UNGEGN. [The complete Report may be found at: http://unstats.un.org/unsd/geoinfo/RCC/docs/rcca10/IP/E%20Conf_103_IP.1_Suriname%20Country%20report.pdf]

[\(Back to top\)](#)

Articles and Publications of the Month

[Charting the Course](#)

Source: Douglas Nebert

Article on the update to the US NSDI Strategic Plan as well as discussion of the Geospatial Platform <http://digital.onthefrontlines.net/i/141677> - July edition

Excerpt from the article: "The Federal Geospatial Data Committee (FGDC) is leading the effort to update the (USA) National Spatial Data Infrastructure (NSDI) Strategic Plan. The Plan spells out clearly the federal government's role in:

- Developing national shared services capabilities
- Ensuring accountability and effective management of federal geospatial resources
- Convening leadership of the national geospatial community

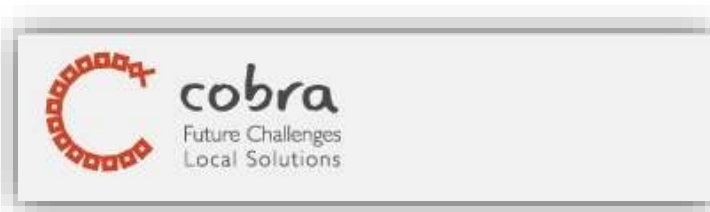
At the center of this effort is Ivan DeLoatch, FGDC Executive Director. "Today throughout government, we are starting to see the utilization of geospatial technologies and apps just explode," he declared in a recent interview ...Mr. DeLoatch said the new plan will define the FGDC's responsibilities and areas of focus over the next three years. Each objective has one or more specific activities describing how the FGDC plans to accomplish its goals. "We are on target with that. Initially it will be high level plan that describes where we want to be in the next 2-3 years; and we will be developing action plans to meet the goals, carry out objectives and measure performance" Version 1 is out, version 2 is due this summer and everything is on track to finalize the strategy by the end of 2013. Then in 2014 the hard work begins; turning strategy into reality." [The complete article may be found at: <http://digital.onthefrontlines.net/i/141677> - July edition]



COBRA Project - New Multimedia Resources and Publications

Source: Jay Mistry

The COBRA Project (www.projectcobra.org) is a multidisciplinary project focused on promoting community-owned solutions to emerging challenges related to climate change, biodiversity conservation and forest management. We are working with indigenous groups in South America, using a range of visual methods including participatory video and participatory photography. The COBRA Project has a series of new multimedia resources and publications

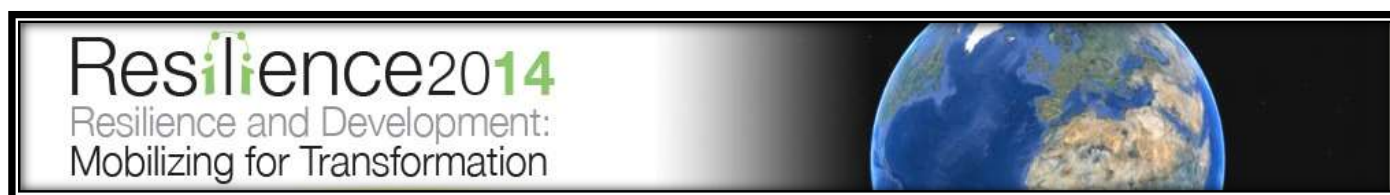


Global Spatial Data Infrastructure Latin America and the Caribbean Newsletter

including two-page briefings, films, photo stories and reports which we would like to share with you. These can be found through our Media Gate: <http://projectcobra.org/category/media/>. Scenarios can be used to compare the current state of a system with a number of prospective futures and provide a way for communities and other stakeholders to see how different interventions or activities may impact on people and the environment. Within the COBRA project, scenarios are used to compare a wide range of international, national and local futures with a range of existing and emerging community-owned solutions. You can find the report here: <http://projectcobra.org/future-scenarios/>. A new publication in the peer-reviewed open access journal *EchoGeo* on the use of the System Viability approach for promoting community resilience and sustainability may be found here: <http://echogeo.revues.org/13411>

Call for Abstracts: Andean Communities in the Face of Global Change

Source: Diana Sietz



Invitation to submit an abstract to the session "Andean communities in the face of global change", which is proposed together with Giuseppe Feola at the Resilience 2014 Conference taking place 4-8 May 2014, Montpellier, France (<http://www.resilience2014.org/>). We invite researchers from different disciplines to engage in an inspiring debate about resilience of Andean livelihoods and ecosystems. We have a preliminary agreement to guest-edit and publish those presentations that fulfill international quality standards in a special issue of the Regional Environmental Change Journal. The deadline for submitting abstracts is **16 August** 2013 (see: <http://www.resilience2014.org/call-for-abstracts-sessions>).

[\(Back to top\)](#)

Geospatial Research, Applications, Software, Data

[Mexico: Launching GIS for Human Settlements \(SIGAH\)](#)

Source: Kate Lance

The state of Querétaro, Mexico, will begin using a new system developed as a collaborative effort between the government and a university that promises to provide "ordered, precise and timely information" regarding population centers that will enable authorities to better plan the growth and development of the state, authorities said. The Geographic Information System of Human Settlements (in Spanish Sistema de Información Geográfica de Asentamientos Humanos - SIGAH) combines geographic information collected by the government, including through satellite mapping, regarding population centers with an informatics program developed by the Tecnológico de Monterrey university that together create a useful tool for the administration of urban development of those population centers. The system will permit authorities to have an integral diagnosis of population centers, analyses and long-term projections that will enable ordered growth and also foresee potential areas of risk of disasters that can be addressed.

Global Spatial Data Infrastructure Latin America and the Caribbean Newsletter

Mobile Mapping to Create Road Map of Brazil



Source: <http://www.gim-international.com/>

In advance of the upcoming major sporting events in Brazil, TomTom has announced that it has deployed its advanced Mobile Mapping (MoMa) technology in the country. The phased MoMa programme aims to provide road users with the most accurate maps of over 85,000 kilometres of the country's road network by early 2014. Places visited by TomTom Mobile Mapping vehicle. To date, over 10,000 kilometres of São Paulo state have already been driven by the MoMa car, identifying more than 17,000 changes to the map, ranging from new speed limits and lane changes to new toll roads or updates to road restrictions. Map updates have also been incorporated via TomTom's MapShare crowd sourcing functionality, which enables users to report changes directly to TomTom for actioning, of which over 250,000 are reported every month. With Brazil hosting a number of major sporting events in the coming years, TomTom has deployed a

Mobile Mapping programme to deliver the freshest, most accurate road network data for the country's road users, said Eszter Pattantyus, vice president at TomTom Maps. It is the first time the advanced Mobile Mapping vehicle units have been used in Brazil and as a result, combined with input from road-users via TomTom's MapShare programme, the company is able to provide the assurance of a more secure, precise trip for drivers across the country.

Climate Forecasts Shown to Warn of Crop Failures

Source: The UNSDI Daily

Climate data can help predict some crop failures several months before harvest, according to a new study from an international team, including a research scientist at NASA's Goddard Space Flight Center in Greenbelt, Md. Scientists found that in about one-third of global cropland, temperature and soil moisture have strong relationships to the yield of wheat and rice at harvest. For those two key crops, a computer model could predict crop failures three months in advance for about 20 percent of global cropland, according to the study, published July 21 in *Nature Climate Change*. The research team, led by Toshichika Izumi with the National Institute for Agro-Environmental Sciences in Tsukuba, Japan, created and tested a new crop model, incorporating temperature and precipitation forecasts and satellite observations from 1983 to 2006. The team studied four crops -- corn, soybeans, wheat and rice - but the model proved most useful for wheat and rice. Crop failures in regions of some major wheat and rice exporters, such as Australia and Uruguay, could be predicted several months in advance, according to the study. The model also forecasted some minor changes in crop yield, not just the devastating crop failures resulting from severe droughts or other weather extremes. This paper is an initial step in a much larger effort to allow farmers in poor countries to get better harvests in years with good growing conditions, and build resiliency for the other years.

GPS Reveals Hurricane Wind Speeds

Source: Arturo Brun-Martinez

In the early 1990s, Stephen J. Katzberg and colleagues at NASA were asked to evaluate a U.S. Navy satellite for a civilian application in global ocean altimetry. The U.S. Navy was beginning to use GPS in their satellites and the team became intrigued with the question of whether the GPS signals could reflect off the surface of the ocean. In the 1990s, Katzberg and James Garrison, a NASA colleague who is currently at Purdue University, continued to study the usefulness of GPS in remote sensing for environmental information. As he did, signal receiver technology and software processing also improved. Around 2000, Katzberg and Garrison began to ask if GPS could be used to measure the speed of ocean surface winds. NASA partnered with NOAA to get GPS receivers on Hurricane Hunter airplanes. "By about 2006 we had developed the required calibration," said Katzberg. This month, Katzberg and colleagues published a paper in the

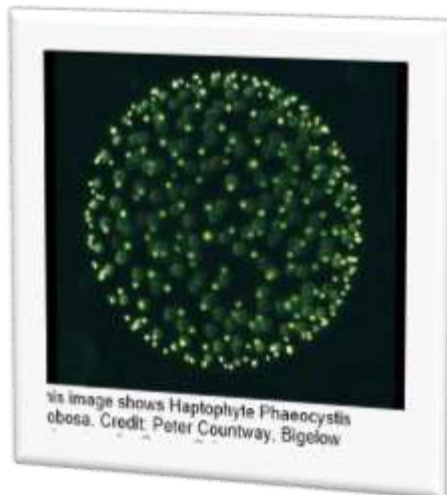


Global Spatial Data Infrastructure Latin America and the Caribbean Newsletter

peer-reviewed journal [Radio Science](#) that demonstrates how their efforts have paid off in terms of accuracy. Katzberg explained that a GPS signal is made up of radio waves emitted by a GPS satellite. When the waves strike the surface of the ocean, about 60 percent of the signal bounces off. The more wind that pushes across water, the rougher the surface of the sea gets. Bigger, more chaotic waves break up the GPS radio waves more as they reflect off the surface. A receiver can compare that disruption to the GPS signal coming from any particular satellite, and then use software to estimate the surface wind speed based on past data and calibration.

[First Atlas on Oceanic Plankton](#)

Source: <http://www.terradyaily.com/>



In an international collaborative project, scientists have recorded the times, places and concentrations of oceanic plankton occurrences worldwide. Their data has been collected in a global atlas that covers organisms from bacteria to krill. Now, they have brought together this data in a global atlas. The publication was released recently under the name of MAREDAT in a special edition of the journal "Earth System Science Data" and provides information on organisms ranging from phytoplankton and bacteria of just one picometre (one billionth of a metre) in size to centimetre-large zooplankton such as krill and other small crustaceans. In spite of the tininess of individual organisms, plankton play a crucial role in the oceans: on the one hand, plankton are an important driver of global biogeochemical cycles, and on the other hand, they form the basis of the food chains in marine ecosystems. Meike Vogt, senior scientist at the Institute of Biogeochemistry and Pollutant Dynamics at ETH Zurich, coordinated the project together with her British colleagues at the University of East Anglia.

[The Best Defense Against Catastrophic Storms: Mother Nature, say Stanford Researchers](#)

Source: <http://www.terradyaily.com/>



The study, "Coastal habitats shield people and property from sea-level rise and storms," published July 14 in the journal Nature Climate Change, offers the first comprehensive map of the entire U.S. coastline that shows where and how much protection communities get from natural habitats such as sand dunes, coral reefs, sea grasses and mangroves. The likelihood and magnitude of losses can be reduced by intact ecosystems near vulnerable coastal communities. One map shows predicted exposure of the United States coastline and coastal population to sea level rise and storms in the year 2100. An interactive map can be zoomed in on for the West, Gulf or East coasts; Hawaii or Alaska; or the continental United States. "The natural environment plays a key role in protecting our nation's coasts," said study lead author Katie Arkema, a Woods postdoctoral scholar. "If we lose these defenses, we will either have to have massive investments in engineered defenses or risk greater damage to millions of people and billions in property." At a moment when many coastal planners are considering their options for dealing with the impacts of sea level rise, the study provides both a national and a localized look at coastal areas where restoration and conservation of natural habitats could make the biggest difference. "Hardening our shorelines with sea walls and other costly engineering shouldn't be the default solution," said Peter Kareiva, the chief scientist at The Nature Conservancy and co-author of the study. "This study helps us identify those places and opportunities we have to keep nature protecting our coastal communities - and giving us all the other benefits it can provide, such as recreation, fish nurseries, water filtration and erosion control."

Global Spatial Data Infrastructure Latin America and the Caribbean Newsletter

gvSIG 2.0: Available New Extension for Automatic Creation of Map Series

Source: gvSIG News Office

gvSIG Association publishes a new extension, gvSIG 2.0. Which automatically creates series of maps that cover certain areas of interest, allowing the variation of field values for each sheet. This extension also let you rotate the area covered by each sheet. To install this plugin you must access the Extension Manager in gvSIG 2.0, option "By URL", and select <http://downloads.gvsig.org/download/gvsig-desktop/> (soon to be available also in other gvSIG repositories). From the available packages shall be selected the following:

- "Document: Layout - Version 2.0.0-SNAPSHOT-26" (it is important to update the plugin "Layouts" for the proper functioning of Map Sheets plugin)
- "Map sheets main plugin"

More information about the plugin and how to install in:

<http://www.gvsig.org/web/projects/contrib/gvsig-mapsheets/pub/mapsheets-gvsig2-folder/userdoc/installation> and <http://www.gvsig.org/web/projects/contrib/gvsig-mapsheets/pub/mapsheets-gvsig2-folder/userdoc/introduction>



[\(Back to top\)](#)

Training and Funding Opportunities, Awards

International Course on Management and Applied Techniques in Cartography

Source: Raquel Serrano-Calvo by way of Santiago Borrero

International Course on Management and Applied Techniques in Cartography



GO Presentation Program Lecturers Certification Admission Location

Latest news of the IC_CARTOTECHNOLOGY, include a new postgraduate program designed as an international networking platform and conducted by Institut Cartogràfic de Catalunya (ICC), the Official Mapping Agency of Catalonia (Spain). The Institut Cartogràfic de Catalunya has launched a Scholarship program for excellent international students participating in the IC_Cartotechnology Postgraduate. Candidates must complete the pre-enrolment form before applying for the scholarships. Visit the official website to check the application instructions and extra detailed information: <http://www.iccartotechnology.com/Home-IC-Cartotechnology/Admission/Scholarship-program>. There is also a NEW Open Synthesis Seminar projects within IC_Cartotechnology in collaboration with different institutions: <http://www.iccartotechnology.com/Home-IC-Cartotechnology/Program#Synthesis%20seminar>. Different enrolment options available: whole postgraduate program, single itineraries or modules. -<http://www.iccartotechnology.com/Home-IC-Cartotechnology/Enrolment>. Visit the official website and complete the PRE-ENROLMENT FORM for extra detailed information: Beginning in September 2013.

Global Spatial Data Infrastructure Latin America and the Caribbean Newsletter

Webinar Demonstration of Marine Valuation Databases

Source: Sarah Carr



The [Ecosystem-Based Management \(EBM\) Tools Network](#) and [OpenChannels.org](#) are pleased to announce that they will co-host a demonstration of three different marine valuation libraries and databases. These libraries/databases will be demonstrated by the Marine Ecosystem Services Partnership (MESP), Earth Economics, and the Ecosystem Services Partnership (ESP). This presentation will be held on Wednesday, August 14, at 1 pm US EDT/10 am US PDT/5 pm GMT. A description of the webinar and information on registering are below. Reserve your Webinar seat now at:

<https://www1.gotomeeting.com/register/160223208>. The MESP offers a searchable library of marine valuation data, which currently holds over 800 studies. The MESP is also a community of practice updating its members on the latest news, events, and jobs in the field. Earth Economics recently developed an Ecosystem Valuation Toolkit. Their data repository is the "world's largest database of published valuation data and literature from natural and social sciences". They also offer a self-service tool to conduct ecosystem service valuation and natural capital appraisal. The ESP created the Ecosystem Services Valuation Database (ESVD) which contains original values in monetary units, organised by service and biome. For this webinar, the MESP, Earth Economics, and the ESP will each present their databases and tools in a short presentation followed by a Question and Answer session. Learn more about the MESP at www.marineecosystemservices.org, Earth Economics at www.esvaluation.org, and ESP at www.fsd.nl/esp/80763/5/0/50.

Geographer Led Massive Online Mapping Class

Source: AAG SmartBrief

Nearly 30,000 people signed up for an online mapping class led by Penn State University geographer Anthony Robinson. The course called [Maps and the Geospatial Revolution](#) used ArcGIS Online, and Robinson notes in this interview that technology has only recently progressed to the point that teaching a course like this has become possible. "The technology threshold that it takes to make a map and do some spatial analysis has now ratcheted down to the point where it's possible to do this with people all over the world working on different technology platforms," he said. More at: Wired.com/MapLab blog



[\(Back to top\)](#)

Employment Opportunities

Post-doctoral Position in Observation and Monitoring of Human Activities in Coastal Seas

Source: SEA-GISLISTSERV

With the support of LabexMER and Foundation de France (Cartahu project), the GEOMER team of LETG lab (UMR 6554) is recruiting a post-doctoral researcher to investigate "Observation and monitoring of human activities in coastal sea: spatial analysis of heterogeneous data". Candidate profile: post-doctoral researcher having a very good knowledge of GIS and statistics methods and tools, including spatial and temporal analysis of geographic information for synthetic integrated mapping.

Objectives:

- To develop original statistical and geostatistical methods for the analysis and use of existing data sets (surveys results, monitoring at sea from aerial surveys, passive acoustic recordings, etc.).



Global Spatial Data Infrastructure Latin America and the Caribbean Newsletter

- To produce a spatio-temporal mapping of human activities (by coupling with spatial approaches), to provide assistance to the management of marine areas.

How to apply? : <http://www.labexmer.eu/job-opportunities/postdoctoral-research-position>. Deadline for application: **August 23, 2013**

[\(Back to top\)](#)

Other

[Primeval Underwater Forest Discovered in Gulf of Mexico](#)

Source: AAG SmarfBrief

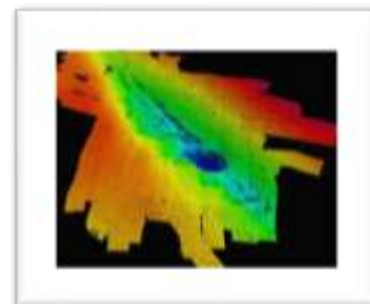
Scuba divers have discovered a primeval underwater forest off the coast of Alabama. The Bald Cypress forest was buried under ocean sediments, protected in an oxygen-free environment for more than 50,000 years, but was likely uncovered by Hurricane Katrina in 2005, said Ben Raines, one of the first divers to explore the underwater forest and the executive director of the nonprofit Weeks Bay Foundation, which researches estuaries. The forest contains trees so well-preserved that when they are cut, they still smell like fresh Cypress sap, Raines said. Raines reached out to several scientists to learn more about the forest. One of those scientists was Grant Harley, a dendrochronologist (someone who studies tree rings) at the University of Southern Mississippi. Harley was intrigued, and together with geographer Kristine DeLong of Louisiana State University, set out to discover the site's secrets. The research team created a sonar map of the area and analyzed two samples Raines took from trees. The trees' growth rings could reveal secrets about the climate of the Gulf of Mexico thousands of years ago, during a period known as the Wisconsin Glacial period, when sea levels were much lower than they are today. In addition, because Bald Cypress trees can live a thousand years, and there are so many of them, the trees could contain thousands of years of climate history for the region, Harley said.



[Deforestation Spikes in Brazil Over Last Year](#)

Source: <http://www.terradaily.com/>

Deforestation has soared in the Brazilian Amazon since a new forestry code was passed last year at the urging of the agribusiness lobby, a non-profit environmental group said. Between August 2012 and June 2013, 1,838 square kilometers (709 square miles) of forest were lost, a 103 percent hike over the same previous period, Institute Amazon said in its latest report. The biggest losses since last August were in the northern state of Para and in the central-western state of Matto Grosso, it added. The institute said deforestation in June totaled 184 square kilometers (71 square miles), up 437 percent over June last year. The increased losses coincided with adoption of the new forestry code last year. The law limits the use of land for farming and mandates that up to 80 percent of privately-owned land in the Amazon rainforest remain intact. But it allows landowners to cultivate riverbanks and hillsides that were previously exempt, and eases restrictions for small landowners who face difficulties in recovering illegally cleared land. More than 60 percent of Brazil's 8.5 million square kilometers (3.3 million square miles) are forests, but two-thirds of it is either privately owned or its ownership is undefined. Environmentalists say the new legislation encourages deforestation.



Global Spatial Data Infrastructure Latin America and the Caribbean Newsletter

[Ecological Methods can Help Solve Food Insecurity Issues](#)

Source: <http://www.guardian.co.uk/>

Using ecosystem-based approaches can provide sustainable food sources and reduce impacts of climate change. Millions of people have been affected by worst drought in decades in the US, Africa, southern Europe, and elsewhere. Numbers are likely to increase in future as climate change is expected to change rainfall patterns and produce more droughts. With global population approaching 8 billion by 2025, this will place a huge demand on governments and the environment to provide sufficient food. The challenge of building sustainable and resilient food systems requires innovative solutions. Adopting ecological approaches can help build resilient food systems in achieving food security in a changing climate. This raises the question of how ecological-based approaches will impact food systems. Can they provide innovative solutions in addressing food shortages and how can they be consolidated and extended? Closer attention to approaches that go beyond words into actions and guide policy practices are urgently needed. One of such approaches is ecosystem-based adaptation (EbA) which provides flexible, cost-effective, and broadly applicable alternatives for building robust food systems and reducing the impacts of climate change. EbA is the use of biodiversity and ecosystem services as part of an overall adaptation strategy to help people and communities adapt to the negative effects of climate change at local, national, regional and global levels. It provides many other benefits to communities, including food security (from fisheries to agroforestry), sustainable water management, and livelihood diversification (through increasing resource-use options). Ecosystem degradation undermines food production and the availability of clean water, among other ecosystem services, thereby threatening human health, livelihoods, and ultimately social stability. Degradation increases the vulnerability of populations to natural disasters. To meet the food needs of today and tomorrow, ecosystem services, such as water provision, pollination, and maintenance of soil fertility must be enhanced. Farmers rely on soil microorganisms to maintain soil fertility and structure for crop production, and on wild species for crop pollination and pest and predator control. [Full article may be found at: <http://www.guardian.co.uk/global-development-professionals-network/2013/mar/05/climate-change-food-security-ecology-ecosystem>]

[\(Back to top\)](#)

Americas: Conferences, SDI Events

[International Forum “Enhancing Resilience to Disasters in Latin America”](#)

Source: <http://www.unitar.org/ldp/>

[The Local Development Programme \(LDP\)](#) was initiated as a result of the [World Summit on Sustainable Development organised in Johannesburg in 2002](#), which acknowledged the key role of partnerships between the United Nations, civil society and academia, local authorities and the private sector in the advancement and successful realization of the sustainable development agenda. Since its inception in 2003, LDP has reached more than 30,000 beneficiaries through over 400 learning events. The Local Development Programme, in collaboration with the Andean Development Corporation (in Spanish CAF) and Chile’s Ministry of Housing and Urban Planning, is organizing the International Forum “Enhancing resilience to

disasters in Latin America.” The Forum, to be held in Chile on 27-29 August of 2013, aims to build an international platform to exchange knowledge and best practices on disaster risk reduction and resilience of cities. [Register now!](#)



Global Spatial Data Infrastructure Latin America and the Caribbean Newsletter

Entering and Expanding Global Business Opportunities

Source: <http://www.mapps.org/>

MAPPS, the national association for private sector geospatial firms, today announced it will host the "Geospatial and Engineering International Conference - Entering and Expanding Global Business Opportunities," November 13-14, 2013 in Alexandria, VA, USA. The conference will provide information and practical knowledge to enable firms to export their services, data and products to



overseas clients. It will feature agencies and organizations that finance, procure, coordinate, and manage geospatial and engineering projects outside the United States with presentations on their programs, budgets, requirements, and procurement procedures. Agencies that assist U.S. companies with exporting will inform firms of services available to assist with expansion into the global market. Supporting organizations include Association of American Geographers (AAG), American Society for Photogrammetry and Remote Sensing (ASPRS), Construction Industry Round Table (CIRT), Global Spatial Data Infrastructure Association (GSDI), National Society of Professional Surveyors (NSPS), and the Urban and Regional Information Systems Association (URISA)

[\(Back to top\)](#)

YEAR 2013

Year 2013 [January](#) [February](#) [March](#) [April](#) [May](#) [June](#) [July](#) [August](#) [September](#) [October](#) [November](#) [December](#)

AUGUST 2013

Jul 29 –Aug 1 *NEW*	Sucre, Bolivia	7th Bolivian Studies Association Congress (AEB)
1-4	Denver CO, USA	NCGE 2013 National Conference on Geography Education
5-7 *NEW*	Indianapolis IN, USA	Hazus Symposium Focuses on Modeling Economic Loss From Natural Disasters
11-15	Newfoundland and Labrador, Canada	Canadian Association of Geographers 2013 Annual Meeting More: http://www.mun.ca/cag2013/
12-15	Huntsville AL, USA	Space and Missile Defense Symposium
12-15 *NEW*	Montevideo, Uruguay	First Conference on Population and Development in Latin America and the Caribbean
12-23	Cartago, Turrialba, Costa Rica	14th International Course economic and institutional foundations for the Management and Assessment of Environmental Services
14-16	Cancun, Mexico	LACCEI 2013
16	Santa Marta, Colombia	Geocensos Roadshow 2013
21-24	Colorado Springs, CO USA	GeoGathering 2013
24-30 *NEW*	Arlington VA, USA	Second Symposium on Advances in Geospatial Technologies for Health
25-29 *UPDATED*	Arlington VA, USA	The 5th International Conference on Medical Geology
26-27	Raleigh NC, USA	2nd International Conference on Hydrology and Ground Water Expo
26-30	Turrialba, Costa Rica	V Adaptation to Climate Change International Course: The Role of Ecosystem Services
27-29	Victoria BC, Canada	34th Canadian Symposium on Remote Sensing
29-31	Ibagué, Colombia	20th Colombian Congress of Geography

SEPTEMBER 2013

Sep. 2 – Nov.25	Turrialba, Costa Rica	E-Learning: Land use planning at the municipal level
------------------------	-----------------------	--

Global Spatial Data Infrastructure Latin America and the Caribbean Newsletter

3-6	Lima, Peru	First International Climate School ACTION / UNESCO on "Climate Variability and Change in the Andes"
4-6	México City, México	SIGSA/ESRI Users National Meeting 2013
7-10	Cambridge MA, USA	International Map Industry Association (IMIA) Americas Annual Meeting and Member Showcase
8-10	Boston MA, USA	Map Conference
8-10	Cambridge MA, USA	MIA (Americas) 2013 Global Conference and Member Showcase
8-11	Daytona Beach FL, USA	Lucity Annual Conference and Training (ACT) 2013
9-13	Turrialba, Costa Rica	International Course of Forest Inventory Analysis Data
9-13	Ciudad de México, México	15th Humboldt International Meeting "Geography and Crisis"
11-13	Rio de Janeiro, Brazil	Latin America Geospatial Forum 2013
11-13	Columbus OH, USA	The 2013 Ohio GIS Conference
16-17	Buenos Aires, Argentina	2nd UNI-COM Latin American Congress: Quality of Life in Latin America and the Caribbean
16-17	Orlando FL, USA	7th Annual Central Florida GIS Workshop
16-17	Williamsburg VA, USA	2013 Virginia GIS Conference
16-17	Canonsburg PA, USA	EnerGIS 2013
NEW		
16-19	Providence RI, USA	GIS-Pro 2013: URISA's 51st Annual Conference for GIS Professionals
16-20	Nashville TN, USA	ION GNSS+ 2013
16-20	La Havana, Cuba	Mesoamerican Society for Biology and Conservation Congress
16-27	Turrialba, Costa Rica	International Course: Using the SWAT Model as a tool for Watershed Management
17-20	La Plata, Argentina	7th Argentine Congress on Hydrogeology and 6th Hispano-Latin American Seminar on current topics in Groundwater Hydrology
22-26	San Francisco CA, USA	Oracle OpenWorld 2013
NEW		
23-25	Saint John, New Brunswick, Canada	Geomatics Atlantic 2013
23-25	Edmonton Alberta, Canada	Ga3 - Geospatial -anywhere, anytime for anyone
23-27	Iguazú, Provincia de Misiones, Argentina	4th Argentinean Forestry Congress and Latin-American Iguazú 2013
24-26	Atlanta GA, USA	Conferencia Servicio de Campo del Este 2013
25-27	Manizales, Colombia	2nd Colombian Bioinformatics Computational Biology Congress (CCBCOL)
25-28	Lake Tahoe CA, USA	AAG Pacific Coast Division Fall Regional Meeting
25-28	Prescott AZ, USA	AGIC Education and Training Symposium
Sep.30-Oct.4	Turrialba, Costa Rica	Climate-smart Territories at the tropic. Information: conferenciawallace@catie.ac.cr
Sep.30-Oct.4	Bogotá D.C, Colombia	International Geomatic Week 2013
Sep.30-Oct.3	Orlando, Florida	Algae Biomass Summit

OCTOBER 2013

1-4	Manizales Caldas, Colombia	EIISI 2013 4 th International Meeting and 7 th National Engineering Research and Information Systems Meeting
1-5	Ciego de Ávila, Cuba	11th International Congress on Hydraulics engineering and 7th International Seminary on Integrated Water Use
3-4	Polvorines, Argentina	II National Congress on Geographic Information Technologies and II Days on Geographic Information Systems Deadline for abstracts (300 words): April 30, 2013. E mail: iicongresotig2013@gmail.com / infosig@unqs.edu.ar
3-24	New Brunswick NJ, USA	ArcGIS: Introduction
NEW		
4-5	Entre Ríos-Concordia, Argentina	26th Forestry Working Days from Entre Rios

Global Spatial Data Infrastructure Latin America and the Caribbean Newsletter

5-11	Salt Lake City UT, USA	IUFRO World Congress 2014. Sustaining forests, supporting people. The Role of Research
6-9	Santa Clara CA, USA	IABD 2013 2013 International Workshop on Intelligent Agents for Big Data (IABD)
6-10	Silicon Valley CA USA	BigData 2013
7-9	Ciudad de Mexico, Mexico	International Convention on Geography and the Environment 2013 (In Spanish CIGMA)
7-31	Turrialba, Costa Rica	25th Intensive Course International Diversified Management of Natural Tropical Forests: Managing the Challenges of Climate Change
9-10	Denver CO, USA	GIS in the Rockies Conference
9-11	Buenos Aires, Argentina	4th Congress on Environmental Sciences
10-12	Omaha NE, USA	AAG Great Plains/Rocky Mountains Division Regional Meeting
10-13	Oakland CA, USA	North American Association for Environmental Education: 41st annual conference
13-16	Tampa FL, USA	GEOINT 2013
14-16	Cambridge MA, USA	Esri Health GIS Conference
NEW		
14-17	Belize City, Belize	ICRI 28th General Meeting (ICRI GM28)
15-19	Chillán, Chile	34th National Congress and 19th International Congress on Geography
16-18	Santiago, Chile	GENERA Latinoamérica 2013
16-18	Lima, Peru	Esri Latin America User Conference
16-18	Washington DC, USA	GIS in Transit Conference
17-18	Montreal, Quebec, Canada	Borders, Walls and Security
NEW		
17-19	Eau Claire WI, USA	AAG West Lakes Division Regional Meeting
18-19	Worcester MA, USA	New England/St. Lawrence Valley (NESTVAL) Division Regional Meeting
18-19	Buffalo NY, USA	AAG Middle States Division Annual Meeting
NEW		
18-20	Newark NJ, USA	44th Binghamton Geomorphology Symposium on Coastal Geomorphology and Restoration
NEW		
20-23	San Antonio TX, USA	Esri Electric and Gas GIS Conference
NEW		
21-23	Panama City, Panama	School on Reference Systems, Crustal Deformation and Ionosphere Monitoring
21-25	Ibagué, Tolima	10th International Course Tools for Carbon Sequestration Monitoring Systems Land Use
22-24	San Antonio TX, USA	13th Annual Outage Restoration and Response Conference
NEW		
22-25	Lima, Peru	5th International Congress on Computing and Telecommunications
23-25	Santiago, Chile	LARS Latin American Remote Sensing Week - 2013
23-25	Buenos Aires, Argentina	Fifth Latin American and Caribbean gvSIG Conference: "Knowledge gives freedom" and Third Argentine working days of gvSIG
23-26	Mendoza, Argentina	4th National Congress on Geography of Public Universities and 10th Cuyanas Workings day The complexity, permanent attribute of geography science
24-26	Nacogdoches TX, USA	AAG Southwest Division (SWAAG) Annual Meeting
24-26	Panama City, Panama	SIRGAS 2013 Meeting
25-26	Toledo OH, USA	AAG East Lakes Division Regional Meeting (jointly with CAG, Ontario)
27-30	Denver CO, USA	GSA 2013 Annual Meeting - 125th Anniversary "Celebrating Advances in Geoscience"
NEW		
27-31	Kansas City MO, USA	National States Geographic Information Council (NSGIC) Annual Meeting 2013
27-31	San Antonio TX, USA	CaGIS/ASPRS 2013 Specialty Conference
NEW		
Oct. 27 – Nov.1	Burlingame CA, USA	ACM International Conference on Information and Knowledge Management (CIKM 2013)
Oct. 28 – Nov.1	Caracas - Venezuela	IX Conference on Remote Sensing Education in Mercosur
30	Houston TX, USA	Blue Marble Users Conference
NEW		
Oct.30-Nov.2	Annapolis MD, USA	AAG Middle Atlantic Division Regional Meeting (jointly with AAG Applied Geography Specialty Group)
Oct.31-Nov.2	Tampa FL, USA	Fifty-fourth Annual Meeting Society for the History of Discoveries

Global Spatial Data Infrastructure Latin America and the Caribbean Newsletter

Oct.31-Nov.3	Trevelin – Chubut, Argentina	International Congress of Geography / Geography Week 74
Oct.31-Nov.3 *NEW*	Seattle WA, USA	Pacific Northwest Regional Conference in the Environmental Humanities: "The Future of the Environmental Humanities: Research, Pedagogies, Institutions, and Publics"

NOVEMBER 2013

4-6 *NEW*	Atlanta GA, USA	Spatial Plexus '13
4-8	Addis Abbaba, Ethiopia.	AfricaGIS 2013 Conference and the GSDI 14 World Conference
4-8	Turrialba, Costa Rica	Biodiversity Analysis: from Functional Diversity to Ecosystem Services
4-8	New York NY, USA	Geoweb Summit #7
5-7	Québec, Canada	Geo-Services International Conference
5-8	Orlando FL, USA	21st International Conference on Advances in Geographic Information Systems (ACM SIGSPATIAL GIS 2013)
6-9	Havana, Cuba	3rd International Congress on Local Development "For Local Sustainable Development"
7 *NEW*	Atlanta GA, USA	Geoweb Summit #7
7-8 *NEW*	San Diego CA, USA	Blue Tech and Blue Economy Summit: Marine Spatial Planning and Promoting Sustainable Development in the Blue Economy
Nov.7-Dec.5 *NEW*	New Brunswick NJ, USA	ArcGIS: Editing and Data Development
13-14	Alexandria VA, USA	MAPPS International Market Conference – Entering and Expanding Global Business Opportunities
13-14	Alexandria VA, USA	International Conference on Exporting for Geospatial, Engineering and Related Services
13-14 *NEW*	Huntsville AL, USA	GEO-Energy-Cyber Huntsville Summit
13-15 *NEW*	Salt Lake City UT, USA	Esri Southwest User Conference
13-16	Atlanta GA, USA	60th Annual North American Meetings of the Regional Science Association International
17 *NEW*	Montevideo, Uruguay	6th Meeting of GeoSUR Program
18 y 19 *NEW*	Montevideo, Uruguay	22 Meeting of Consultation of the Commission of Cartography, 19 Meeting of Consultation of the Commission on Geography, 18 Meeting of Consultation of the Commission on History and 12th Meeting of Consultation of the Commission on Geophysics of PAIGH
18-22 *NEW*	Río de Janeiro, Brazil	13th National Symposium on Urban Geography - SIMPURB
18-22	Mar del Plata, Argentina	7th Latin America and the Caribbean Meeting for Biotechnology REDBIO Argentina 2013 "Biotechnology and Society: Dialogues for Sustainable Development"
18-29	Bogotá, Colombia	IGAC Announces a Basic GIS Course
20-22 *NEW*	Montevideo, Uruguay	20 General Assembly of the PAIGH
21-24	Chicago IL, USA	38th Annual Meeting of the Social Science History Association (SSHA)
24-26	Roanoke VA, USA	Southeast (SEDAAG) Division Regional Meeting
Nov.25 – Dec.6	Turrialba, Costa Rica	International Course: Comprehensive Management of Irrigation: Resilience to natural hazards geological and climatic

DECEMBER 2013

2-6	Lima, Peru	15th UN Industrial Development Organization (UNIDO) Conference 2013
10-11 *NEW*	Baltimore MD, USA	Esri Mid-Atlantic User Conference

Global Spatial Data Infrastructure Latin America and the Caribbean Newsletter

Year 2014

Year 2014 [January](#) February [March](#) [April](#) [May](#) June July August September [October](#) November December

JANUARY 2014

28-30	San Antonio TX, USA	DistribuTECH 2014 Conference and Exhibition
29-30	Redlands CA, USA	Geodesign Summit Asks Attendees to Reimagine Their World

MARCH 2014

23-27	Louisville KY, USA	ASPRS 2014 Annual Conference- Geospatial Power in Our Pockets
-------	--------------------	---

APRIL 2014

8-12	Tampa, FL, USA	AAG Annual Meeting 2014
Apr.27-May 1 *NEW*	Kansas City MO, USA	MAGIC 2014

MAY 2014

7-9 *NEW*	Sao Paulo, Brazil	MundoGEO#Connect 2014
---------------------	-------------------	---------------------------------------

OCTOBER 2014

22-24 *NEW*	Ft. Worth TX, USA	Race, Ethnicity and Place 2014 Conference
-----------------------	-------------------	---

[\(Back to top\)](#)

Please mention SDI-LAC as source of information in any correspondence you may have on items on this issue

To subscribe to SDI-LAC, please do so online at:
<http://www.gsdi.org/newslist/gsdisubscribe.asp>
Nancy Aguirre, PAIGH, Editor cnaguirre@ipgh.org
Global Spatial Data Infrastructure Association,
<http://www.gsdi.org>

DISCLAIMER:
GSDI, PAIGH and the Editor will not be held liable for any errors, mistakes, misprints or incorrect information from third parties. Copyright © 2013. All rights reserved.

[\(Back to top\)](#)