

# Global Spatial Data Infrastructure

## Latin America and the Caribbean Newsletter

SDI-LAC

December

2011

Vol. 8, No.12

Spatial Data Infrastructure-Latin America and the Caribbean (SDI-LAC) is a regional, monthly, and free, electronic newsletter from the [Global Spatial Data Infrastructure Association](#) (GSDI). It focuses on aspects related with Spatial Data Infrastructure, and on GIS, remote sensing, and data management issues, related with SDI in Latin America and the Caribbean. It aims to raise awareness, provide useful information to strengthen national SDI initiatives, and support synchronization of regional efforts.



Global Spatial Data Infrastructure

# GSDI

[GSDI Definition](#)

The [Pan-American Institute of Geography and History](#) (PAIGH), member organization of GSDI, and the [Permanent Committee on Geospatial Data Infrastructure for the Americas](#) (PC-IDEA), promote SDI development in the region. The newsletter is prepared by PAIGH for GSDI.

[Message from the Editor](#)

[Input to this Issue](#)

[Global and Regional SDI, News, Presentations](#)

[IGS News, Links, Publications](#)

[National SDI, News, Links, Presentations](#)

[Articles and Publications of the Month](#)

[Geospatial Research, Applications, Software, Data](#)

[Training and Funding Opportunities, Awards](#)

[Employment Opportunities](#)

[Other](#)

[Americas: Conferences, SDI Events \(Year 2011\) \(Year 2012\)](#)



## Message from the Editor

This SDI-LAC issue highlights the following news: The **Global and Regional SDI** section comprises notes on the OGC Business Value Survey; Report of the 7th Meeting of PC-IDEA; Launch of new GeoSUR Portal and Viewer; and the agINFRA data infrastructure. The **IGS section** includes a message on the IGS LinkedIn Subgroup. The **National SDI** segment covers activities of Argentina, Belize, Brazil, Chile, Colombia, Ecuador, and Mexico including local and national SDIs, and Capacity Building Initiatives. **Articles and Publications** of the month comprise a paper on Social Media Influence on SDI; last issue of the Geographic Perspective Journal; and a paper on Geodemographic Segmentation Systems. **Geospatial Research and Applications** underline the Grenadines Marine Resource and Space-use Information System; the CSA, NASA and CATHALAC Cooperation During Historical Floods; ArcGIS application to the Android Platform; and Space-based Technology to Certify Organic Crops. The **Training and Funding Opportunities** section encompasses calls for international and national initiatives, among them a Colombian Doctoral Program in Geography; and the Coral Reef Conservation Fund 2012. Finally, several **Events taking place in the Americas** are highlighted in the last section.

We are pleased to welcome **Eduardo Freitas Oliveira**, as SDI-LAC Newsletter **correspondent member** for Brazil; he is a Cartographic Engineer, MSc in GIS, editor of the portal

MundoGEO and the magazines InfoGNSS and InfoGEO Geomatics.

The SDI-LAC Newsletter is available in Portuguese! Translation of SDI-LAC Portuguese is possible thanks to undergrad students from UNESP **Matthew de Barros Manhani** and **Esrom A. Rissate Júnior** and the cartographers engineers: **Eduardo Freitas Oliveira**, MSc in GIS, editor of the portal MundoGEO and magazine InfoGNSS and InfoGEO Geomatics; **Silvane Paixão**, MSc in Geodetic Sciences and Geoinformation Technologies, PhD in Land Administration and Land Information Management; **Camila Bassetto Guedes**, advisor of the Operations Department of the Air Space Control (DECEA), **Juan Carlos Gironda Mamani**, a consultant in Geotechnology and IT solutions for Geoinformation, **Annette Pic**, MSc in Remote Sensing; **Edilce Figueiredo Burity**, MSc in Computer Systems and Technologist of IBGE / PE Geographic Information and Statistics. Under the general coordination of Silvane Paixão.

Back issues of the newsletter are at the GSDI website: <http://www.gsd.org/newsletters.asp>

Editor, Nancy Aguirre, Pan-American Institute of Geography and History (PAIGH), <http://www.ipgh.org>, [cnaguirre@ipgh.org](mailto:cnaguirre@ipgh.org)

# Global Spatial Data Infrastructure

## Latin America and the Caribbean Newsletter

### Input to this Issue

Mabel Álvarez	President, International Geospatial Society (IGS), Argentina
Anete Berzina	EU Overseas Forum
Santiago Borrero	Secretary General, Pan-American Institute of Geography and History, PAIGH, Mexico
Rinku Roy Chowdhury	Chair, Human Dimensions of Global Change Specialty Group, Association of American Geographers, Assistant Professor, Department of Geography, Indiana University, USA
Susanna De Beauville-Scott	Project Coordinator, RRACC, OECS Secretariat, Morne Fortune, Castries, Saint Lucia
Guy Edwards	Research Fellow, Center for Environmental Studies, Brown University, USA
Jonathan Foley	Professor, Director, Institute on the Environment (IonE), University of Minnesota, USA
Eduardo Freitas	Correspondent for SDI-LAC Newsletter, Brazil
Elieth Hoyos	Professional on Virtual Environments, Cadastre, IDECA, Bogota, Colombia
Kate Lance	SERVIR, NASA/USRA Coordinator, Huntsville, AL, USA
Valeria Oliveira de Araújo	National Cartography Commission (CONCAR), PC-IDEA Executive Secretary, Brazil
Eric van Praag	Regional Coordinator, GeoSUR Programa, CAF
Steven Ramage	Executive Director, Marketing and Communications, OGC, USA
Patricia Solis	Director of Research and Outreach for the AAG, USA
Louisa Wood	Head, Marine Assessment and Decision Support Programme, UNEP World Conservation Monitoring Center (WCMC), Cambridge, UK
Dawn Wright	ESRI Chief Scientist, Redlands, USA

[\(Back to top\)](#)

### Global and Regional SDI, News, Presentations



**GSDI 13  
WORLD  
CONFERENCE**



**GEOIDE  
SCIENTIFIC  
CONFERENCE**



**CANADIAN  
GEOMATICS  
CONFERENCE**



#### **TECTERRA and ESRI Lead Sponsors for GGC 2012!**

Source: GSDI News

TECTERRA and ESRI / ESRI Canada have claimed lead sponsorships for the Global Geospatial Conference 2012. The conference will take place at the Québec City Convention Centre from May 14-17, 2012 and is a joint conference of the GSDI World Conference (GSDI 13), the 14th GEOIDE Annual Scientific Conference, the 7th 3D GeoInfo Conference, and the Canadian Geomatics Conference (CGC) 2012.

TECTERRA, the sole Titanium Sponsor, provides a full range of support programs that enable Canadian companies to bring innovative geomatics solutions to market. Since TECTERRA's operations began in May 2010, the organization has committed the investment of more than \$12-million toward commercializing geomatics technology and creating new jobs in Canada. As part of its sponsorship, TECTERRA is offering a \$50,000 grant to a Canadian company that has best advanced development and / or use of innovative geomatics in Integrated Resource Management. Applying companies are highly encouraged to exhibit their advancements at the conference. The criteria for the award will be posted on the conference and TECTERRA web sites on or before December 1, 2011. To learn more, please visit <http://www.tecterra.com>

ESRI and ESRI Canada, the sole Platinum Sponsor, are dedicated to the field of Geographic Information Systems (GIS). As the world leader in GIS with over 1 million users, ESRI offers innovative solutions for Spatial Data Infrastructure development allowing the creation, visualization, analysis, and presentation of information for better decision-making. Esri's open, standards-based, and interoperable GIS platform provides the foundation for

# Global Spatial Data Infrastructure

## Latin America and the Caribbean Newsletter

modernizing cartography production, building essential data sets and geoweb services, and deploying metadata catalogs. To learn more, please visit <http://www.esri.com>

### *Global Geospatial Conference 2012*

Organized by the GSDI Association and GEOIDE Network, this conference will be a premier international and global forum in 2012 for interacting with international constituencies of geospatial and spatial data infrastructure administrators, policymakers, academics, users, politicians, developers, service providers, students and professionals. The joint conference invites presentations covering the full range of practice, development and research experiences that advance the practice and theory of spatially enabling government, industry and citizens. The conference features prominent plenary speakers, workshops, technical tracks, posters, a major industry exhibit, an industry showcase, and social events. Several publications will arise from the joint conference. See <http://www.gsdi.org/gsdi13> and/or <http://www.geoide.ulaval.ca> for all the details. Contact: Atiyeh Ghanbari, Communications Officer, Réseau GEOIDE Network [atiyeh.ghanbari@geoide.ulaval.ca](mailto:atiyeh.ghanbari@geoide.ulaval.ca)

### **Invitation to Complete OGC Business Value Survey**

Source: Steven Ramage

In support of ongoing cooperative efforts among the Open Geospatial Consortium (OGC) and the GSDI Association, we encourage you to complete the OGC Business Value Survey. If you or your organization are users of technologies that use OGC standards, complete the survey at <http://uncc.surveymshare.com/s/AQAIJDC> If you or your organization are technology providers, complete the survey at <http://uncc.surveymshare.com/s/AQAIZBC>

The survey should take ten to fifteen minutes and should be completed on or before **December 18**, 2011. Detailed information on the survey may be found [here](http://www.opengeospatial.org/pressroom/pressreleases/1496): <http://www.opengeospatial.org/pressroom/pressreleases/1496>

### **Report of the 7th Meeting of the Standing Committee for Geospatial Data Infrastructure of the Americas (PC-IDEA)**

Source: Valeria Oliveira de Araújo by way of Santiago Borrero

The minutes of the 7th Meeting of PC-IDEA, held on August 18 in Rio de Janeiro, Brazil, were drafted with participation of representatives of various member countries and relevant organizations. Of the seventeen recommendations agreed are highlighted the following:

- PC-IDEA members welcomed the resolution of the Economic and Social Council (ECOSOC) that creates the Committee of Experts on Global Geospatial Information Management (GGIM).
- It is recommended that the training plan being prepared by GTplan include a short-term component with courses already in place in countries.
- The training plan should also include courses for English-speaking countries.
- Countries are called to contribute in the presentation for the Global Forum in Korea of institutional arrangements and policies. This work should include the institutional role of each country's organization with respect to geospatial information, including the specific role of the National Institutes of Cartography.
- The request for support from PC-IDEA countries for the development of version 2.0 of Global Map was ratified.
- The potential for collaboration between the GeoSUR Program and PC-IDEA activities was ratified.
- The Secretary General of the Pan American Institute of Geography and History (PAIGH) noted the importance of incorporating in PC-IDEA's website documents produced in the past, related to the management of the PC-IDEA initiative. In addition, he proposed partnership between PC-IDEA and PAIGH to optimize use of resources and take advantage of the expertise available in both organizations.
- It was approved the realization of an event on SDI application for the management of natural disasters and hazards for the Latin American Geospatial Forum to be held in Rio de Janeiro in August 2012. For this purpose Colombia, Peru and Canada are responsible for developing the technical program of the event.

The complete document of this minutes may be accessed through the PC-IDEA website at: <http://www.cp-idea.org/>



# Global Spatial Data Infrastructure

## Latin America and the Caribbean Newsletter

### Launch of new Portal and Viewer

Source: Eric van Praag by way of Santiago Borrero

**GeoSUR** La Red Geoespacial de América Latina y el Caribe



After several months of hard work and programming, a new version of the GeoSUR Geoportal was released on November 4. This version has been migrated to the open-source version ESRI Geoportal Server. This new version offers greater functionality than the previous one and some interesting new features that will be incorporated over the coming months. The section for Data Publishers have undergone the greatest changes, for which a Webinar for explaining data publishers how it works will be held soon. The new Portal also offers a new Map Viewer developed with Flex technology. This is the same Map Viewer used for the Regional Map Service. The map viewer offers some interesting new functions, amongst them the possibility to add layers from OGC services from inside the viewer and the capacity to search for metadata and add services also from inside the viewer. GeoSUR thanks the USGS for all the hard work and dedication put into this new release, in particular to Michelle Anthony and Yousif Malik of EROS. The Portal can be launched from the same old URL: [www.geosur.info](http://www.geosur.info)

### Brazilian National Institute for Space Research Signs Agreement for Receipt of CBERS Satellite data in Gabon

Source: Eduardo Freitas



Gabon will receive data from CBERS-3, which will be launched by Brazil and China in 2012, according to the agreement signed in November 8 between the Brazilian National Institute for Space Research (in Spanish INPE), the China Centre for Resources Satellite Data and Application (CRESDA), and the Gabonese Agency for Space Studies and Observations (AGEOS). INPE's goal is having stations covering all Africa, allowing the countries to have free access to satellite data. In Gabon, a station in Libreville is already being built. Similarly, stations are being installed in Egypt and Kenya, while in South Africa and in the Canary Islands the infrastructure for receiving CBERS images is already complete. The CBERS Program was born in 1998 from a partnership between Brazil and China in the space technical scientific segment. Due to CBERS, Brazil and China can provide developing countries with benefits of using orbital data. Satellite information is indispensable to the forest monitoring, biodiversity conservation, disaster management and forecasting, mapping

of agricultural areas and urban growth, among other applications. More information at: <http://www.cbbers.inpe.br>

### [Landsat 5 Mission in Jeopardy](http://www.usgs.gov)

Source: <http://www.usgs.gov>

The U.S. Geological Survey (USGS) has stopped acquiring images from the 27-year-old Landsat 5 Earth observation satellite due to a rapidly degrading electronic component. Landsat 5 was launched in 1984 and designed to last 3 years. The USGS assumed operation of Landsat 5 in 2001 and managed to bring the aging satellite back from the brink of total failure on several occasions following the malfunction of key subsystems. There is now an increasing likelihood that the Landsat 5 mission is nearing its end. "This anticipated decline of Landsat 5 provides confirmation of the importance of the timely launch of the next Landsat mission and the need for an operational and reliable National Land Imaging System," stated Anne Castle, Assistant Secretary for Water and Science at the U.S. Department of the Interior. "The USGS is committed to maintaining the unique long term imaging database that the Landsat program provides." The USGS-operated Landsat 7 remains in orbit collecting global imagery. Since its launch in 1999 with a 5-year design life, Landsat 7 has experienced an instrument anomaly which reduces the amount of data collected per image. Landsat 8, currently called the Landsat Data Continuity Mission, is now scheduled to be launched in January 2013.

## Global Spatial Data Infrastructure

### Latin America and the Caribbean Newsletter

#### agINFRA: a data infrastructure to support agricultural scientific communities

Source: Agricultural Information Management Standards (AIMS) Newsletter no. 6, November 2011

AGRICULTURAL INFORMATION MANAGEMENT STANDARDS  
"STANDARDS, TOOLS, SERVICES AND ADVICE"

AIMS

Sharing research data is "an intricate and difficult problem" (Borgman, 2011, JASIST). There is relatively little sharing taking place and few standards for giving data the required computational semantics to make sharing an automated process. Yet, reusing data is one of the core principles of science and poses a major concern for scientists and policy makers alike. To help address this challenge for agricultural scientific communities, FAO have begun to work with a team of eleven global partners (including the Escuela Superior Politécnica del Litoral ESPOL in Ecuador) to deliver a new Innovative Integrated Infrastructure Initiative (I3) – [agINFRA](http://www.aginfra-project.eu) - that will remove existing obstacles concerning sharing, processing and accessing scientific information and data in agriculture, as well as improve the preparedness of agricultural scientific communities to face, manage and exploit the ever-increasing abundance of multi-disciplinary data that is available to support agricultural research. Website [www.aginfra-project.eu](http://www.aginfra-project.eu) is currently under construction ready for a January 2012 launch. The inaugural agINFRA project meeting took place in Rome between the 8th and 10th November, 2011, hosted by FAO. A series of presentations and interactive workshops from the consortium of world-leading scientific and technical research institutes, specialist SMES, agricultural enterprises and NGOs enabled the Team to begin the design and development process for creating the innovative scientific data infrastructure. The project meeting highlighted the wide variety of agricultural databases and data types that would need to be supported by the infrastructure, the types of users that would access the data and the service components that would facilitate quicker and easier data generation, certification, curation, annotation, navigation and management. agINFRA's next phase involves undertaking user needs research to develop content and technical requirements

#### OGC and USGIF Announce WhereCon 2012 to be held in Washington, DC

Source: OGC Press Release



The image shows a banner for the WhereCon 2012 conference. The word "wherecon" is written in a large, lowercase, sans-serif font, with "where" in green and "con" in blue. To the right of the text, the dates "April 10-12, 2012" and the location "Walter E. Washington Convention Center Washington DC" are listed. At the bottom of the banner, it says "Brought to you by the Open Geospatial Consortium (OGC) and the United States Geospatial Intelligence Foundation (USGIF)". The background of the banner features a stylized map of the world with green and blue tones.

The Open Geospatial Consortium (OGC) and the United States Geospatial Intelligence Foundation (USGIF) announce the WhereCon 2012 (<http://wherecon.opengeospatial.org/>) conference, to be held on April 10-12, 2012 in Washington, DC. Online registration (<http://wherecon.com/register>) for WhereCon 2012 is open and seating is limited. Visit <http://www.wherecon.com> for more information. The question of "Where?" is increasingly becoming the organizing principal for how public and private sector enterprises get their jobs done. For a comprehensive list of topic areas and an up-to-date list of speakers, please visit <http://www.WhereCon.com>. You can also keep up to date with the latest news and offers on Twitter via @WhereCon2012 (<http://twitter.com/#!/WhereCon2012>), Facebook (<https://www.facebook.com/event.php?eid=214817745232784>) and LinkedIn (<http://events.linkedin.com/WhereCon/pub/848428>).

[\(Back to top\)](#)



# Global Spatial Data Infrastructure

## Latin America and the Caribbean Newsletter



### IGS News, Links, Publications



International  
Geospatial Society



#### International Geospatial Society has a LinkedIn Subgroup

Source: Mabel Alvarez

Recently, it has been created a subgroup in LinkedIn called the IGS - International Geospatial Society, as part of the GSDI Group on this network. It thus arises a new means to strengthening communication within this society, created in the field of social networks. Likewise, given the diversity of languages among the IGS members, the possibility of using languages other than English in this subgroup has been considered.

Few lines are include below for those who do not know what IGS is about.

The International Geospatial Society (IGS) is an initiative of the GSDI Association to establish and support the community of experts and professionals with common interests in Spatial Data Infrastructures (SDI), GIS (Geographic Information System) and geospatial topics. The main objective of IGS is to establish and strengthen communications at the international level, among people who are actively linked to the promotion, development and advancement of Spatial Data Infrastructures and related concepts.

While only geospatial organizations can be linked to the GSDI Association, the International Geospatial Society allows people to participate fully with their peers around the world, although not belonging to any geospatial organization.

Those interested may become members of the International Geospatial Society by paying an annual fee of US\$50 for regular members and US\$25 for full time college students.

There are also special provisions for people from nations with low and very low income, who can register free of charge under certain conditions, providing specific information of value to the global community rather than the annual tuition fee. The list of nations of low and very low income may be found at the following link:  
<http://www.gsdi.org/RankingTable>

The International Geospatial Society and GSDI Association collectively provide a space for global networking, and communication and learning among its members. These are inclusive organizations providing contact and communication channels between the various parts of the world.

As the preceding paragraphs have been only a very brief summary, to answer any questions or to provide further information, we suggest you contact any of the members listed in <http://www.igeoss.org/node/3>

[\(Back to top\)](#)



### National SDI, News, Links, Presentations

#### ARGENTINA

##### [Workshops on the Law of National Geographic Information](#)

Source: <http://www.ign.gov.ar/>

In order to collect comments and suggestions, the Directorate of the National Geographic Institute (in Spanish IGN) conducted a series of workshops for



# Global Spatial Data Infrastructure

## Latin America and the Caribbean Newsletter

the analysis of the newly drafted Map Law. The aim of these workshops was to actively involve all decisions making institutional staff on this new law that will affect their mission and daily work activities. The workshops took place on November. The meetings focused on analyzing the bill drawn on the basis of the requirements of various institutions and agencies. Specific chapters were discussed, incorporating comments and suggestions from the audience. The "Map Law" was enacted on October 3, 1941, so the current National Geographic Institute administration considers relevant to assess the modification of certain points of regulation. During May and July this year there was a series of meetings to establish a Commission of Analysis, aimed at evaluating the reform of the Map Law No. 22963. Currently, emphasis is given to an internal project assessment towards consolidation of a federal partnership that is part of the spirit of the new Directorate of IGN.

### BELIZE

#### Second Meeting of the National Spatial Data Infrastructure

Source: <http://www.ipgh.org/>



The Ministry of Environment and Natural Resources, and the Earth Information Centre, the headquarters of the National Section of the Pan-American Institute of Geography and History (PAIGH) in Belize, held the Second Meeting of the National Spatial Data Infrastructure on November 9-10, 2011. Detailed information on this event may be found at: <http://www.ipgh.org/Sec-Nales/BEL/Files/IPGH-Invitation.pdf>. The Ministry in collaboration with the PAIGH and other local and regional agencies began in 2009 to work on establishing Belize's National Spatial Data Infrastructure (NSDI) to foster national development. On October 6, 2011 an NSDI Working Group session took place to revitalize the groups established in 2009 as to incorporate pertinent outputs to the 2<sup>nd</sup> Meeting of the NSDI.

### BRAZIL

#### The Brazilian Institute of Geography and Statistics Releases Coordinates and Heights for 21,304 Brazilian Locations

Source: Eduardo Freitas

The Register of Selected Brazilian Locations is available, in 11/18/2011, on the Brazilian Institute of Geography and Statistics (in Portuguese IBGE) website. It provides names, political-administrative subordination (i.e. region, state, meso- or micro-region to which the location belongs), coordinates (latitudes and longitudes) and average heights of the centers of 21,304 locations such as municipalities, villages, rural settlements and indigenous villages, among others existing in 2010. All information can be accessed by name of location at <ftp://geoftp.ibge.gov.br/Organizacao/Localidades/>. The Register of Selected Brazilian Locations responds to a growing demand from society for geo-referenced information. It will be frequently updated and improved. The database also provides precise coordinates (latitude and longitude) of all the 516 indigenous villages (i.e. houses or set of houses or huts which can hold at least 20 indigenous people) catalogued by FUNAI (in Portuguese Indigenous Protection Service) and of the 921 rural settlements (or agri-villages) existing in 2008, according to INCRA (in Portuguese National Institute for Colonization and Agrarian Reform). The database also includes information about 4,718 villages (or district centers, which are subdivisions of the municipalities), 7,086 small towns, 210 rural nuclei, 355 hamlets and 1,933 isolated urban areas.

# Global Spatial Data Infrastructure

## Latin America and the Caribbean Newsletter

### Updated NSDI Maps Viewer

Source: <http://www.inde.gov.br/>

The I3GEO version of the National Spatial Data Infrastructure (NSDI) was updated to version 4.5. NSDI use I3GEO as a map viewer since its launch in April 2010. The new version of I3GEO had retrofitted its appearance and speed, in addition to its functionality that has been reorganized for easier navigation. The I3GEO is a web-based software built upon a range of other free software, particularly Mapserver. Its main focus is the provision of geographic data and a set of navigation tools for the analysis, map sharing and production on demand. The I3GEO is part of the public portal software. Differences between Version 4.5 and the former include:

(i) Integration with Google Maps and Google Earth; (ii) Using OpenLayers as display interface thus improving the performance of I3GEO; and (iii) Improvements in the administration tools.



### CHILE

### SNIT Training Process in Regions Ends for this Year

Source: <http://www.snit.cl/>

This year were visited the regions of Tarapaca, Atacama, Valparaíso, O'Higgins, Maule, Araucania, Bio Bio, Aysen and Magallanes as part of the actions taken by the Executive Secretariat of the National Territorial Coordination Information System of Chile (SNIT) in the arena of regional coordination. Workshops and technical training to officials of various land information public services were conducted in all of them. The regions of O'Higgins and Bio Bio were chosen to finish the land information support and training process this year for public institutions. About 20 professionals and technicians who participated in this training received instructions on gvSIG Opensource software to improve land information management within government agencies.



### COLOMBIA

### Training on IDESC Tools and Services

Source: <http://www.cali.gov.co/>



A series of training activities to public and private institutions in the municipality of Santiago de Cali began on November, 2011, with aid of the Colombian Society of Architects. These activities aimed at informing users on the tools and services provided by the Spatial Data Infrastructure of Santiago de Cali (in Spanish IDESC) through its portal, in order to facilitate access to geographic information in the municipality, while increasing the appropriation of Information and Communication Technology (ICT). The IDESC also participated at the "1st Local Working Days of Geomatics and Surveying" organized by the University del Valle, which took place on October 28, 2011, which main objective was to offer a stage for meeting and discussing geoinformatics developments in Colombia and worldwide through spatial information knowledge sharing by students and graduates.



# Global Spatial Data Infrastructure

## Latin America and the Caribbean Newsletter

### ECUADOR

#### [Latin American Community Spatial Data Infrastructure \(LATIN IDE\)](#)

Source: <http://www.redclara.net/>

The University of Cuenca, Ecuador has proposed establishing the LATIN IDE Community (Latin-American Community for Spatial Data Infrastructure) under the disciplinary area of Natural Disasters. The LATIN IDE Community is a virtual community without access restrictions that brings together researchers of 13 institutions from 7 countries (Argentina, Bolivia, Chile, Colombia, Costa Rica, Ecuador and Peru), around work and academic research on Spatial Data Infrastructure. The establishment of the LATIN IDE Community at the international level, requires agreement of the producers, integrators and users of territorial spatial data, and will maintain its independence through the use of Open Geospatial Consortium (OGC) services such as WMS (Web Map Service). The rationale for the consolidation of the LATIN IDE Community is linked to fundamental concepts including:

- Organizing geographic information produced by universities based on metadata.
- Training and update on SDI, as well as generation of SDI research lines.
- Experience exchange with other world regions

#### [Technology Transfer Courses on "Geospatial Data Infrastructure", Ecuador](#)

Source: <http://www.clirsen.gob.ec/>

Technological transfer courses on Spatial Data Infrastructure (SDI) were held on November 7-11 in Guayaquil and November 28 to December 2 in Quito, with the goal of providing basic concepts and tools for implementing an SDI. The courses were directed to technicians of the CLIRSEN - SENPLADES project, and public entities, as well as professionals, technicians and personnel involved with natural resources and the environment.



### MEXICO

#### [Third 2011 Session of the National Geographic and the Environment Information Subsystem Executive Committee](#)



Source: <http://www.snieg.mx/>

The third 2011 session of the National Geographic and the Environment Information Subsystem Executive Committee addressed progresses on the following: the 2011 Annual Statistics and Geography Program (in Spanish PAEG); several proposals to be integrated into the PAEG 2012; the development of Technical Standards 2011; a document to submit for consideration by the Board for the compulsory use of catalog locations which purpose is to have a single Key Catalog and Names of Federal Entities, Municipalities and Towns to facilitate interoperability of the State Units registers; the integration of statistics from both administrative and geographic records; and standardization of data structures that allow users to make associations between data and geographic locations.

[\(Back to top\)](#)



## Global Spatial Data Infrastructure Latin America and the Caribbean Newsletter

### Articles and Publications of the Month

#### **Social Media to have Indirect Influence on SDI**

By Clarice Africa, 1 November 2011; <http://www.futuregov.asia/articles/2011/nov/01/social-media-have-indirect-influence-sdi/>

In the midst of a big wave of social internet technologies, often referred to as web 2.0, would it have a significant influence on the Spatial Data Infrastructure (SDI)?

For Prof. Abbas Rajabifard, President of the Global Spatial Data Infrastructure (GSDI) Association, social networking sites such as Facebook, Youtube, and Twitter all have indirect effect on the SDI.

Prof. Rajabifard told FutureGov that web 2.0 has definitely opened up emerging channels for communication and engagement and in particular for contribution of information through the source of crowd-sourced data or Volunteered Geographic Information (VGI) that will be used by SDIs to help develop dynamic descriptions of places and provide another source of data for users.

“The concept and its implementation present a valuable and potential source of information, which we should consider. Although voluntarism has always been present in some way or form in the collection of spatial information, it has never before existed on such a prolific scale as evidenced from the plethora of sites on the internet that use, produce and share geo-referenced data,” he said.

“So, with the new facilities and technologies available today, we can now consider VGI being a potential role for society and a function within the SDI.”

According to Prof. Rajabifard, the integration of VGI with official information can be a powerful source of novel data that can be included in SDIs. Particularly for the disaster management, public safety and also covering the areas where not much information is available.

“This is especially important in developing countries and areas where reliable spatial data is scarce and the digital divide is more delineated,” he said, adding that such technologies can also add to the richness and diversity of data available when added to authoritative data and information.

“How an SDI is able to incorporate this type of data is the major area of influence from an SDI perspective, and one which we are now starting to research. We should also look to the future and consider new concepts and technologies such as the spatial marketplace and the impending ICT revolution,” he said.

Apart from being the President of GSDI, Professor Rajabifard is also the Director of the Centre for SDIs and Land Administration at the Department of Infrastructure Engineering, The University of Melbourne and is also a member of Victorian Spatial Council, Australia. He is a member of the International Cartographic Association (ICA)-Spatial Data Standard Commission and was Vice Chair of Spatially Enabled Government Working Group of the UN sponsored Permanent Committee on GIS Infrastructure for Asia and the Pacific (PCGIAP)

#### ***Geographic Perspective Journal***

Source: Editorial, *Geographical Perspective Journal* by way of Santiago Borrero



# PERSPECTIVA GEOGRAFICA

Revista del Programa de Estudios de Posgrado en Geografía

ISSN 0123-3766

# Global Spatial Data Infrastructure

## Latin America and the Caribbean Newsletter

Is a journal specializing on geography and regional planning studies, which mainly publishes original reflection, review and investigation related to the spatiality of social, economic, political, cultural and natural phenomena, from different perspectives and theoretical approaches. Indexed at Publindex, Latindex and CLASE, is coordinated through a scientific cooperation agreement between the Pedagogical and Technological University of Colombia (UPTC) and the Geographic Institute "Agustin Codazzi" (IGAC). You may read volume 15 of this publication by registering at: <http://virtual.uptc.edu.co/revistas/index.php/perspectiva>.

Also available at: <http://dialnet.unirioja.es/servlet/revista?codigo=15743>

### How Developing Countries can Derive Value from the Principles and Practice of Geodemographics, and Provide Fresh Solutions to Millennium Development Challenges

By Adebola Ojo and Patrick Oseloka Ezepue (By way of Kate Lance)

*Journal of Geography and Regional Planning* Vol. 4(9), pp. 505-512, 4 September, 2011

Available online at <http://www.academicjournals.org/JGRP>



**Abstract:** Geodemographic segmentation systems are area classifications that use multi-criteria and geostatistical analytics to group places and people into clusters of similarity. The benefits of these geocomputation techniques have been largely embraced by countries in the developed world where the origins of geodemographics lie. In spite of identified value of segmentation techniques for driving efficacy in policy making in developed societies, numerous developing countries still lack these systems. At the very basic level, some of the reasons for this paucity may appear obvious; however some more pertinent issues like the misunderstanding of the significance of data infrastructure has often been overlooked. In this paper, we provide some background on the antecedents of geodemographics and focus on the challenges and benefits of spatial segmentation as an option for driving evidence-based policy making within developing countries [The complete paper may be found at:

<http://www.academicjournals.org/JGRP/PDF/pdf2011/4th%20Sep/Ojo%20and%20Ezepue.pdf>].

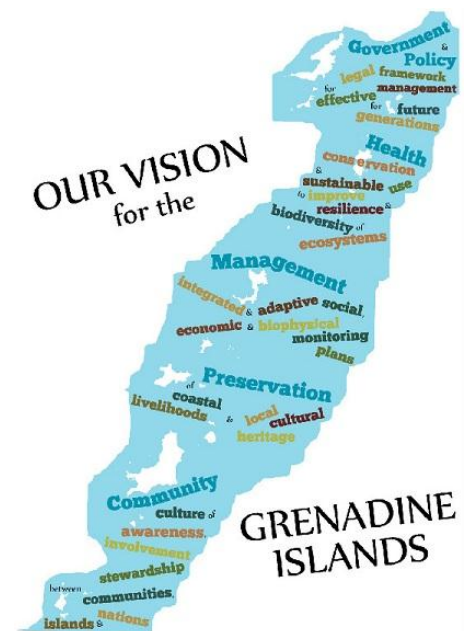
[\(Back to top\)](#)

## Geospatial Research, Applications, Software, Data

### Grenadines Marine Resource and Space-use Information System (MarSIS)

Source: <http://www.grenadinesmarsis.com/>

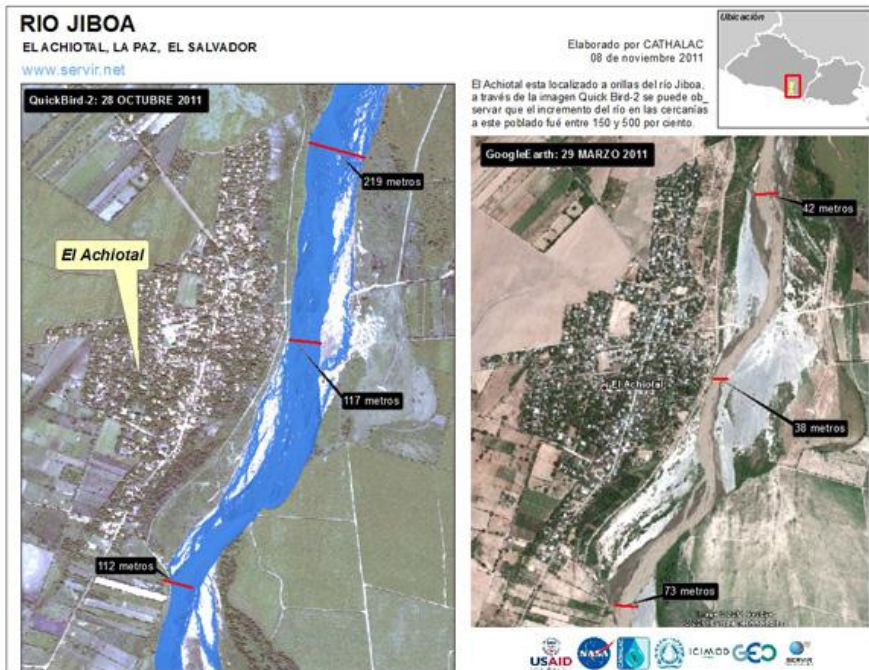
MarSIS is a Participatory GIS (PGIS) project of the University of West Indies (UWI), Center for Resource Management and Environmental Studies (CERMES) Department, Barbados chosen as a site for development of an integrated Marine Space-use Information System (MarSIS). This participatory marine resource information system has been created together with a wide range of Grenadine stakeholders including: a variety of people who work in the sea (including fishers, diveshops, daytours, watertaxis, yachting charter companies and ferries), a variety of marine management agencies (including the Fisheries, Planning, Tourism, Environment, Port Authority, Coast Guard and Forestry Departments) of both countries, community members, NGOs, a number of UWI Graduate students and the Sustainable Grenadines, Inc. (SusGren). This has been done in order to integrate a wide range of marine-based knowledge and provide people with a more complete information base for marine planning and management. This information system can be used to highlight important areas such as: critical fishery habitats (essential fish habitats, nursery areas, endangered species); areas of highest biodiversity; important marine ecosystems (mangrove, seagrass and coral reefs); areas of high recreational and cultural importance; areas important for fishing, marine-based tourism and shipping; safe anchorages; areas of land-based sources of pollution as well as identify areas of highest human threat and potential space-



use conflicts. SusGren has recently been awarded funding to carry out a marine spatial planning project from October 2010 - March 2012 entitled "Developing a Framework for a Comprehensive Marine Multi-use Zoning Plan for the Grenadine Islands", funded by the National Ocean and Atmospheric Administration (NOAA). In tandem, funding has been received through the Global Environment Facility Small Grants Program (GEF SGP) to ensure the involvement of Grenadines marine resource users in this marine spatial planning process through a complimentary grant entitled "Incorporating the Knowledge and Resource Values of Stakeholders in Marine Resources Management in the Grenadines". Additionally, The Nature Conservancy (TNC) Eastern Caribbean Program is providing additional technical support for this project. Through the development of a transboundary multi-use marine zoning plan for the Grenadines, the project builds on pre-existing initiatives in the Grenadine islands of St. Vincent and the Grenadines and Grenada, namely: the Marine Resource and Space-use Information System (MarSIS) geodatabase and the Protected Area Systems Plans developed by both countries of St. Vincent and the Grenadines and Grenada. Moreover, by using a broad collaborative approach, the project aims to ensure broad public buy-in, self-enforcement, and long-term sustainability of the plan through engaging government agencies, NGOs/community groups as well as the marine users from the project inception. More information at: <http://www.grenadinesmarsis.com/>

### CSA, NASA and CATHALAC Cooperation During Historical Floods in El Salvador, Guatemala and Panama

Source: Earth Observation Express (November 10, 2011) No. 53



Within the framework of the International Committee on Earth Observation Satellite (CEOS), the Canadian Space Agency (CSA) is collaborating with the National Aeronautics and Space Administration (NASA) on various projects helping to monitor, manage and respond to natural disasters. During October, several regions in El Salvador, Guatemala and Panama experienced torrential rainfall associated with the passage of two tropical depressions. Rainfall amounted to more than 1250 mm in some places, resulting in major floods and landslides. Through the existing partnership with the Caribbean Satellite Disaster Pilot (CSDP), Water Center for the Humid Tropics of Latin America and the Caribbean (CATHALAC) worked in close cooperation with CSA's Earth Observation Applications and Utilizations (EOAU) Division and with

NASA to obtain Earth Observation (EO) satellite information related to the floods. CSA planned for a rapid acquisition and delivery of several RADARSAT-2 scenes over the flood affected regions of El Salvador, Guatemala and Panama. NASA provided access to EO-1 ALI imagery. Based on the analysis of the satellite data, geomatics experts at CATHALAC produced several flood maps showing the extent of the disaster in the region. In Guatemala, the flood map products were used to coordinate the disaster response on the ground by the Presidential Secretariat for Planning (in Spanish SEGEPLAN), the Ministry of the Environment and Natural Resources (in Spanish MARN) and the National Coordinating Entity for Disaster Reduction (in Spanish CONRED). In El Salvador the National Territorial Studies Service (in Spanish SNET) and the Ministry of the Environment and Natural Resources (also called MARN) were engaged in similar activities. CATHALAC and the Vice-Chancellor of the Republic of Panama officially expressed their appreciation to CSA's EOAU for the immediate EO support. All RADARSAT products developed by CATHALAC are available on the SERVIR portal: [http://www.servir.net/en/disaster\\_evaluations/](http://www.servir.net/en/disaster_evaluations/). For more information, please communicate with [guy.seguin@asc-csa.gc.ca](mailto:guy.seguin@asc-csa.gc.ca) and [guy.aube@asc-csa.gc.ca](mailto:guy.aube@asc-csa.gc.ca)

# Global Spatial Data Infrastructure

## Latin America and the Caribbean Newsletter

### Call for Joining the Bío Bío Community Portal, Chile

Source: <http://snitchile.blogspot.com/>

The regional government of Bio Bio invites representatives of regional and other public entities as well as organized citizens to participate in the development of their own "Wiki", a website which pages can be edited by multiple volunteers through the web browser. The site aims to strengthen citizen participation and networking, whether public or private, thereby reinforcing the principles of a democratic state. In the Wiki are found various information: news, training opportunities, and information related to the Bio Bio region land management, as shown in the following link: <http://bit.ly/utt1bo>. To participate in this initiative please log on to: <http://bit.ly/vTtioE>



### ArcGIS Comes to the Android Platform

Source: <http://www.esri.com/>



Google Android users can now access data and mapping capabilities on their smartphones with the ArcGIS for Android application. ArcGIS for Android lets users find and share maps as well as deploy GIS data and functionality on Android devices. The free app is now available and can be downloaded directly from the Android Market. ArcGIS for Android is a native application that serves as a mobile gateway into the ArcGIS system. It provides an intuitive user experience for querying map layers and data. People can also use the app to edit features and attribute information on the fly while collecting field data and performing inspections. In addition, ArcGIS for Android includes a legend, a favorites feature, and a tool for measuring area and distance. To learn more, visit [esri.com/android](http://esri.com/android)

### Food from Space: Satellites Show Future of Eco-endeavors

Source: <http://edition.cnn.com/>

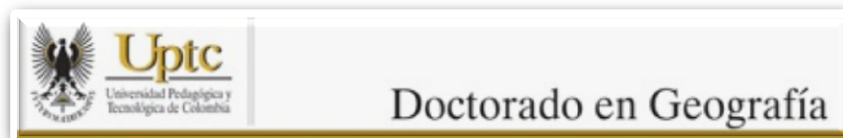
Farmers on terra firma are using space-based technology to certify organic crops. Satellites have been used to prove that crops were fertilizer-free in a year-long project by [ECOCERT](#) (Certification Body for Sustainable Development), one of Europe's leading organic certification agencies, and the European Space Agency. Instead of just detailed overhead photos, infra-red and thermal images and other data was collected and deciphered to gain a "spectral signature" of the crops and soil. From that ECOCERT say they can determine if a plant is organically-grown or not. The trials proved over 80% successful, according to Dr Pierre Ott of ECOCERT, and compared to physically going to fields to collect, test and certify them, much more time effective. While the technology for organic certification needs to be improved -the ECOCERT test only worked on wheat and corn grown in large fields- satellites are already sweeping huge swathes of the world's arable land. While the satellites and information technology are hugely expensive the cost of the information to the end users and farmers is not.

[\(Back to top\)](#)

## Training and Funding Opportunities, Awards

### Doctoral Program in Geography, Colombia

Source: Geographic Society of Colombia by way of Santiago Borrero



The Pedagogical and Technological University of Colombia (in Spanish UPTC) in agreement with the Geographic Institute "Agustin Codazzi" (in Spanish IGAC) invites professionals with graduate studies in geography or related sciences, to participate in the Second Cohort

Doctoral Program in Geography.

**Research Areas:** Society and Territory; Environmental Geography; Sustainable Territorial Ordering and Development; and Geomatics applied to the solution of geographical problems.

## Global Spatial Data Infrastructure

### Latin America and the Caribbean Newsletter

**Education:** The program includes 80 credits to be developed over 3 years, divided into six academic periods, two per year, each of 16 weeks. Classroom courses and seminars are held during the first three academic periods.

**Registration Deadline:** **December 7, 2011.**

**Location:** Geographic Institute "Agustín Codazzi" (in Spanish IGAC). Cra. 30 No. 48-51, CIAF Building, Bogotá.

**More Information:** at Room 109 of IGAC, Phone 3694000 or 3694100 ext. 4583.

[http://www.uptc.edu.co/facultades/f\\_educacion/doctorado/geografia/inf\\_general/index.html](http://www.uptc.edu.co/facultades/f_educacion/doctorado/geografia/inf_general/index.html).

E-mail: [doctorado.geografia@uptc.edu.co](mailto:doctorado.geografia@uptc.edu.co). If no master's degree holder, you may also register to the MA Program in Geography that is also offered by IGAC; for more information please contact IGAC-CIAF Office 107, Fax: 3694080. 3694000 or 3694100 ext switch 4592 and 4651. E-mail: [maestria@igac.gov.co](mailto:maestria@igac.gov.co)

### [Nippon Foundation Nereus Fellowship: "Improving Species Range Map Methodologies for Marine Biodiversity"](#)

Source: Louisa Wood by way of EU Overseas Forum



The University of Cambridge and [UNEP-WCMC](#) (United Nations Environment Programme-World Conservation Monitoring Centre) have secured funding to provide full support to a PhD student for 3 years (subject to satisfactory progress) from 1 October 2012 under the Nereus Programme, a co-operation between the Nippon Foundation and the University of British Columbia, Canada. Nereus is a new programme designed to develop scientific capability for predicting future seafood production. The programme builds on international networking of scientists to communicate and bring about change to how we exploit the oceans in order for our children and grandchildren to enjoy seafood and experience a healthy ocean. The goal to develop future ocean simulations is fundamentally dependent on the availability of reliable, spatially explicit databases of relevant data, which are global in extent and of appropriate spatial and temporal resolution to the policies and management decisions that they inform. The Nippon Foundation Nereus Fellowship provides funding to enable PhD level research into a) exploring the transferability of methodological developments from the terrestrial to the marine environment and b) investigating how best to bring modelling and expert-based approaches together to improve species distributions. As such, this research proposes to:

1. Develop range maps using a number of algorithms, including adapting one or more from recent terrestrial science; and including expert-derived maps, and exploring the feasibility of using a Bayesian approach to the development of distribution maps using expert input as priors. This work will be highly collaborative with relevant partners.
2. Carry out blind reviews by experts of all of these distribution maps to explore the relative performance and limitations of the different algorithms, and use these reviews to rank algorithms and develop an improved approach;
3. Explore the relative reliability of expert judgment and modelling approaches to data poor problems, at a range of scales.

The prospective student should have extremely good computational and quantitative skills, preferably with experience in ecological niche modelling at large scales. An understanding of patterns and processes in marine ecology will be seen as advantageous. This will be a highly collaborative project and evidence of collaborative and interpersonal skills will be looked for in the successful applicant. Candidates must have graduated at a University before October 2012. Suitably qualified candidates wishing to be considered for the Nereus Fellowship must apply to the Board of Graduate Studies, 4 Mill Lane, Cambridge, CB2 1RZ, for admission to the University as a Graduate Student using the usual GRADSAF form. This is obtainable online, or in hard copy from the Board: <http://www.admin.cam.ac.uk/offices/gradstud/prospec/apply/applynow/>. In addition to the application to the Board of Graduate Studies, candidates must submit to the Department of Geography, University of Cambridge: i) a covering letter stating why they are suitable for the project; ii) a CV; iii) a brief statement of research in relation to the Nereus project; and iv) the names of two academic referees who can be contacted by email. Incomplete applications will not be considered and it is important that referees supply a reference by the closing date. Departmental application documents should be sent to Ms. Gae Matthews, Graduate Administrator, Department of Geography, Downing Place, Cambridge CB2 3EN or via e-mail to: [gae.matthews@geog.cam.ac.uk](mailto:gae.matthews@geog.cam.ac.uk), no later than 12:00 noon UK time on Tuesday, **31st January 2012**. Late applications will not be accepted.

# Global Spatial Data Infrastructure

## Latin America and the Caribbean Newsletter

### Funding Opportunity: Coral Reef Conservation Fund 2012

Source: Anete Berzina



Apart from U.S., international eligibility includes the Wider Caribbean; however, all international coral reef locations are eligible. The National Fish and Wildlife Foundation and NOAA's Coral Program, announce the availability of grant funding for coral reef domestic U.S. jurisdiction and international projects. The full RFP can be found at <http://www.nfwf.org/coralreef>. International priorities are to (1) Implement NOAA's International Strategy; (2) Apply Lessons from NOAA-Sponsored Training Programs; or, (3) Increase the Marine Protected Areas (MPA) capacity in the Caribbean. More information on priority geographies can be found [here](#). All persons, organizations, and non-U.S. Federal agencies are eligible to apply, including parties within and outside the United States. The majority of awards under this program will fall in the range of US\$20,000 to US\$70,000. Matching funds from non-federal sources are required at a 1:1 ratio for all proposed projects. Please see the RFP announcement for a description of the funding priorities for this competition as well as other important application information. Brief pre-proposals for this competition are due on **December 19, 2011** and must be submitted via the NFWF Easygrants system (<http://www.nfwf.org/easygrants>). For more information, contact Michelle Pico at [pico@nfwf.org](mailto:pico@nfwf.org) or Erin Hofmann at [erin.hofmann@nfwf.org](mailto:erin.hofmann@nfwf.org). More information at [http://www.nfwf.org/AM/Template.cfm?Section=Charter\\_Programs\\_List&CONTENTID=21905&TEMPLATE=/CM/ContentDisplay.cfm](http://www.nfwf.org/AM/Template.cfm?Section=Charter_Programs_List&CONTENTID=21905&TEMPLATE=/CM/ContentDisplay.cfm).

[\(Back to top\)](#)

## Employment Opportunities

### [Join ESRI Chief Scientist in her Mission to Help the Oceans: Applications Engineer](#)

Source: Dawn Wright

There is an [ocean GIS initiative](#) that ESRI has now launched with fantastic work going on across the company. The Application Engineer will assist the Chief Scientist with ocean GIS projects, which include:

- The design, creation, and maintenance of ocean GIS tools and workflow automation methods, particularly for coastal and marine spatial planning and benthic terrain analysis
- Development of 3D and 4D ocean visualization and analysis prototypes
- The porting of long-standing, popular ocean GIS tools to the latest formats so that the ocean community can continue using them
- Collaborating with key colleagues on usability issues and best practices, especially the International Coastal Atlas Network that the Chief Scientist co-direct with colleagues from Europe



Chief Scientist is looking for a person with a strong coding or scripting background (e.g., Python, Java, JavaScript, C++, Silverlight, etc.), with strong experience in marine science or marine resource management but who also has exceptional communication skills (a good writer and not afraid to give a good talk or two from time to time). The person definitely must be able to multi-task and not mind working on a couple of different projects at a time, if that situation should arise. And while the person will be working with and reporting to the Chief Scientist, he or she should also be a team player, be able to work easily with others on various projects, always with a professional attitude, with respect for others, and with a good sense of humor. Read the [full job description for the Applications Engineer](#) and apply online.

# Global Spatial Data Infrastructure

## Latin America and the Caribbean Newsletter

### Four Postdoc Opportunities: Global Landscapes Initiative, University of Minnesota

Source: Jonathan Foley by way of Rinku Roy Chowdhury



As part of new Moore Foundation grant, the Institute on the Environment (IonE) is seeking up to 4 new postdoctoral researchers to join our Global Landscapes Initiative (GLI) which is focused on understanding global-scale changes in land use, agriculture, food security, and the environment. The overarching goal of the GLI is to develop new knowledge and tools that will improve our ability to balance agricultural production, food security and environmental stewardship, and to promote the long-term sustainability of agricultural landscapes across the globe. We seek excellent candidates with Ph.D.-level expertise in global environmental science,

agricultural systems, and land use / land cover change. We seek candidates with experience with large-scale modeling and analysis, remote sensing, or high-end scientific computing. We specifically seek candidates to focus on: Global environmental tradeoffs of food security and agriculture; Applications of GLI research to Latin America; and Developing global mapping tools and software. The positions are available for up to 1-3 years. For more information, please contact Prof. Jonathan Foley ([jfoley@umn.edu](mailto:jfoley@umn.edu)), Director, Institute on the Environment. Candidates should submit a cover letter, CV, research statement and the names of 3 references. Please submit all application materials online at: <http://www1.umn.edu/ohr/employment>, requisition # 174958. For full consideration, please apply by **December 15, 2011**.

### ToRs Re OECS USAID Climate Change Project

Source: Susanna De Beauville-Scott by way of Patricia Solis and Santiago Borrero

Two Terms of reference (TORs) related to work being done under the OECS USAID (Organisation of Eastern Caribbean States - United States Agency for International Development) climate change project, titled "Reducing the Risks to Human and Natural Assets Resulting from Climate Change" are listed below. Deadline: **December 9, 2011**

- 1) [TORs re consultancy services to undertake preliminary work towards achieving policy, legislative and institutional arrangement reforms in each Participating Member State \(PMS\) to facilitate adaptation to climate change.](#)
- 2) [ToRs re consultancy services to administer/undertake country-specific environmental Knowledge Attitude and Practice \(KAP\) survey for the six independent PMS of the OECS.](#)

[\(Back to top\)](#)

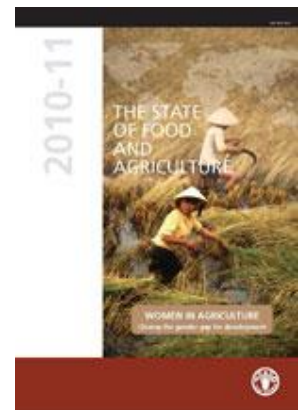
## Other

### The State of Food and Agriculture 2010-2011

Source: <http://www.fao.org/>

Women in Agriculture: Closing the gender gap for development <http://www.fao.org/publications/sofa/en/>. Women make significant contributions to the rural economy in all developing country regions. Their roles differ across regions, yet they consistently have less access than men to the resources and opportunities they need to be more productive. Increasing women's access to land, livestock, education, financial services, extension, technology and rural employment would boost their productivity and generate gains in terms of agricultural production, food security, economic growth and social welfare. Closing the gender gap in agricultural inputs alone could lift 100–150 million people out of hunger. No blueprint exists for closing the gender gap, but some basic principles are universal: governments, the international community and civil society should work together to eliminate discrimination under the law, to promote equal access to resources and opportunities, to ensure that agricultural policies and programmes are gender-aware, and to make women's voices heard as equal partners for sustainable development. Achieving gender equality and empowering women in agriculture is not only the right thing to do. It is also crucial for agricultural development and food security.

Read the executive summary <http://www.fao.org/docrep/013/i2050e/i2082e00.pdf>







## Global Spatial Data Infrastructure Latin America and the Caribbean Newsletter

Download the full publication <http://www.fao.org/docrep/013/i2050e/i2050e.pdf>

See the press release <http://www.fao.org/news/story/en/item/52011/icode/>

View a presentation <http://www.fao.org/publications/sofa/sofa-2011-presentation/en/>

### Climate Exchange

Source: Guy Edwards by way of LARC list

# Intercambio Climático

Bienvenidos al blog de la Plataforma Climática Latinoamericana

Latin American Platform on Climate (LAPC) in partnership with Brown University invite you to visit their blog, [www.intercambioclimatico.com](http://www.intercambioclimatico.com). Climate Exchange is the first multilingual blog (English, Spanish and Portuguese) on climate change which sets out the various voices and priority issues in Latin America. As a source of key information and knowledge for journalists, citizens and decision makers in the region, [intercambioclimatico.com](http://www.intercambioclimatico.com) harnesses the knowledge of 17 members of the Platform and covers the most important issues on climate change in Latin America. In addition, the blog provides space to climate change experts in Latin America to contribute their ideas and analysis through interviews and invited articles. It includes publications and recommended readings of the LAPC, and updated news on climate change and Latin America. Also, the blog provides a comprehensive list of blogs, websites and key stakeholders (regional organizations, research centers, networks and portals, academic institutions and NGOs) working on these issues. If you want to do an interview or contribute an article on climate change issues and Latin America please contact [guy\\_edwards@brown.edu](mailto:guy_edwards@brown.edu).

### UNESCO launches Global Open Access Portal

Source: Agricultural Information Management Standards (AIMS) Newsletter no. 6, November 2011

The [Global Open Access Portal](http://www.goap.org) (GOAP), aiming at presenting a top level view of Open Access to scientific information, was launched at a special side event organized during the UNESCO General Conference, on 1 November 2011, at Paris Headquarters. The portal has country reports from over 148 countries with weblinks to over 2,000 initiatives/projects in Member States. The Global Open Access Portal (GOAP), funded by the Governments of Colombia, Denmark, Norway, and the United States Department of State, presents a current snapshot of the status of Open Access (OA) to scientific information around the world. For countries that have been more successful implementing Open Access, the portal highlights critical success factors and aspects of the enabling environment. The Global Open Access Portal is designed to provide the necessary information for policy-makers to learn about the global OA environment and to view their country's status, and understand where and why Open Access has been most successful.



### Aquatic Commons: digital repository for marine and freshwater organizations

Source: Working group: AgriOcean DSpace Community

# Aquatic Commons

[Aquatic Commons](http://aquaticcommons.org/) (<http://aquaticcommons.org/>) is a thematic digital repository covering the natural marine, estuarine /brackish and fresh water environments. It includes all aspects of the science, technology, management and conservation of these environments, their organisms and resources, and the economic, sociological and legal aspects. It is directed by the International Association of Aquatic and Marine Science Libraries and Information Centers

# Global Spatial Data Infrastructure

## Latin America and the Caribbean Newsletter

([IAMS LIC](#)) to provide visibility, usage and impact through global access to digital publication from worldwide marine and freshwater organizations that do not have access to an institutional repository of their own. It is complementary to [OceanDocs](#), which is supported by the Intergovernmental Oceanographic Commission ([IOC](#)) specifically to collect, preserve and facilitate access to all research output from members of their Ocean Data and Information Networks (ODINS). The records of both repositories are harvested by Avano which aggregates records from marine and aquatic repositories around the World. In December 2010, within the framework of the long-standing collaboration between IAMS LIC and the IOC's International Oceanographic Data and Information Exchange ([IODE](#)) the IOC Project Office for IODE in Oostende, Belgium agreed to host Aquatic Commons as part of its efforts to promote free and open access to marine scientific information to the global community (which also includes its own [OceanDocs](#)). The cooperation includes technical support.

[\(Back to top\)](#)

### Americas: Conferences, SDI Events

#### [Call for Participation: I Geoinformatics Workshop \(UCIENCIA 2012\)](#)

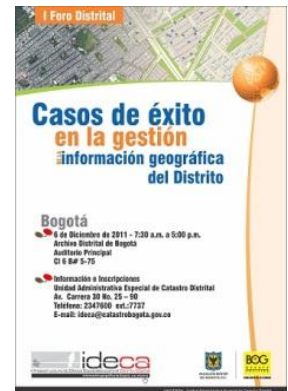
Source: Kate Lance

The GEYSED (Geoinformatics and Digital Signals) Development Center, from the Universidad de las Ciencias Informáticas (UCI) invites to professors, students, specialists and researchers in the field of Geoinformatics to participate in the First Geoinformatics Workshop to be held on February 20-22, 2012 in Havana, Cuba inside the VI Scientific Conference UCIENCIA. Papers submission deadline: **December 9, 2011**. Topics: Algorithms and techniques for processing geographical information; Applied geoinformatics; Cartography and Spatial Databases; Geoinformatics and Education; Spatial Data Infrastructure, and Geographical Information Systems.

#### [District Forum on IG Management](#)

Source: Elieth Hoyos

The Spatial Data Infrastructure of Bogota Capital District (in Spanish IDECA) is organizing the First District Forum entitled: "Success Stories in the management of geographic information of the District" that will take place on december 6, 2011 from 7:30 to 17:00, at the Disctric Archives of Bogota, Colombia. For more information please contact: [ideca@catastrobogota.gov.co](mailto:ideca@catastrobogota.gov.co)



[\(Back to top\)](#)

### YEAR 2011

[Year 2011](#) January February March April May June July August September October November [December](#)  
[Year 2012](#) [January](#) [February](#) [March](#) [April](#) [May](#) [June](#) [July](#) [August](#) [September](#) October November December

#### DECEMBER 2011

5-9	Washington DC, USA	<a href="#">National BIM Conference</a>
5-9	Port-of-Spain, Trinidad and Tobago	<a href="#">6th Caribbean Conference on Comprehensive Disaster Management (CDM)</a>
5-9 <b>*NEW*</b>	San Cristóbal de las Casas, Chiapas, México	<a href="#">GIS Workshop at Chiapas</a>
6 <b>*NEW*</b>	Bogota, Colombia	<a href="#">District Forum on IG Management</a> Contact: <a href="mailto:ideca@catastrobogota.gov.co">ideca@catastrobogota.gov.co</a>
Nov. 10 – Dec. 8	New Brunswick NJ, USA	<a href="#">ArcGIS: Editing and Data Development Series</a>
17 <b>*NEW*</b>	Denver CO, USA	<a href="#">Geodesy and Photogrammetry Course starts</a>



# Global Spatial Data Infrastructure

## Latin America and the Caribbean Newsletter

### YEAR 2012

[Year 2012](#) [January](#) [February](#) [March](#) [April](#) [May](#) [June](#) [July](#) [August](#) [September](#) [October](#) [November](#) [December](#)

#### JANUARY 2012

5-6	Redlands CA, USA	<a href="#">Geodesign Summit</a>
10-12	Vancouver, Canada	<a href="#">Eighth International Conference on Environmental, Cultural, Economic and Social Sustainability</a>
16-18	Los Angeles CA, USA	<a href="#">Eighth International Conference on Technology, Knowledge and Society</a>
22-26	Phoenix AZ, USA	<a href="#">MAPPS 2012 Winter Conference</a>
<b>*NEW*</b> 23-25	Denver CO, USA	<a href="#">International LIDAR Mapping Forum (ILMF)</a>
<b>*NEW*</b> Jan. 23- Feb.6	USA	<a href="#">GIS in Mining and Exploration Online Summit</a>

#### FEBRUARY 2012

2	World wide	<a href="#">World Wetlands Day 2012</a>
20-22	Havana, Cuba	<a href="#">I Geoinformatics Workshop (UCIENCIA 2012)</a>
24-28	New York NY, USA	<a href="#">Association of American Geographers Annual Meeting</a>
Feb.26- Mar.1	Annapolis MD, USA	<a href="#">National States Geographic Information Council Mid-Year Meeting</a>
<b>*NEW*</b> Feb. 27- Mar. 1	Mar del Plata, Argentina	<a href="#">XVIII International Sunflower Congress</a>
<b>*NEW*</b> Feb. 28- Mar. 1	Orlando FL, USA	<a href="#">RIEGL International Airborne and Mobile User Conference</a>

#### MARCH 2012

12-15	San Antonio TX, USA	<a href="#">GIS/CAMA Technologies Conference</a>
14-17	Paraná, Argentina	<a href="#">6th Latin American Geographic Colloquium "The New Latin American Regional Settings from a Geographic Perspective"</a> Contact: <a href="mailto:infomesvicologuio@uader.edu.ar">infomesvicologuio@uader.edu.ar</a> ; <a href="http://www.technology-conference.com/">http://www.technology-conference.com/</a>
19-23	Sacramento CA, USA	<a href="#">ASPRS 2012 Annual Conference</a>
21-23	Asunción, Paraguay	<a href="#">II National Congress of Agricultural Sciences: Integration, Competitiveness and Sustainable Development</a>

#### APRIL 2012

2-4	San Francisco CA, USA	<a href="#">Where 2.0</a>
<b>*NEW*</b> 10-12	Washington DC, USA	<a href="#">WhereCon 2012</a>
11-13	Sacramento CA, USA	<a href="#">CalGIS: 18th Annual California GIS Conference</a>
16-18	Loveland CO, USA	<a href="#">GIS-T 2012: GIS for Transportation</a>
16-20	Mar del Plata, Argentina	<a href="#">XIX Latin American Congress and XXIII Argentine Congress the Science of Soil</a>
19-21	Bahia Blanca, Argentina	<a href="#">IX National Conference on Physical Geography</a> Contact: <a href="mailto:geografiafisica@uns.edu.ar">geografiafisica@uns.edu.ar</a>
22-26	Kansas City MO, USA	<a href="#">MAGIC - 2012: Mid-America GIS Symposium</a>
25-28	Cordoba, Argentina	<a href="#">XI National and VIII Latin American Congress on Surveying</a> Contact: <a href="mailto:seceventos@agrimcba.org.ar">seceventos@agrimcba.org.ar</a>

#### MAY 2012

7-9	Rio de Janeiro RJ, Brazil	<a href="#">GEOBIA 2012: Geographic Object-Based Image Analysis</a> Contact: <a href="mailto:geobia2012@dpi.inpe.br">geobia2012@dpi.inpe.br</a>
8-10	New Orleans LA, USA	<a href="#">CTIA Wireless 2012</a>
14-17	Quebec City, Canada	<a href="#">GSDI-13: Spatially Enabling Government, Industry and Citizens</a>
15-17	Ontario, Canada	<a href="#">Canadian Hydrographic Conference (CHC2012)</a>
<b>*NEW*</b> 22-23	Washington DC, USA	<a href="#">Location Intelligence Conference/Oracle Spatial 2012</a>
<b>*NEW*</b> 29-31	São Paulo, Brazil	<a href="#">MundoGEO#Connect: "Sharing Information for a Better World"</a> Contact: <a href="mailto:connect@mundogeo.com">connect@mundogeo.com</a>



# Global Spatial Data Infrastructure

## Latin America and the Caribbean Newsletter

### JUNE 2012

3-6	Salvador Bahía, Brazil	<a href="#">33<sup>rd</sup> Inter-American Congress on Sanitary and Environmental Engineering AIDIS</a>
4-6	Rio de Janeiro RJ, Brazil	<a href="#">UN Conference on Sustainable Development (commonly called Earth Summit 2012) or 'Rio+20'</a>
4-7 <b>*NEW*</b>	Las Vegas NV, USA	<a href="#">Hexagon 2012</a>
6-8 <b>*NEW*</b>	Villa de Leyva, Colombia	<a href="#">6<sup>th</sup> Symposium of the Latin American and Caribbean Society of Environmental History - SOLCHA</a>
12-13	Buenos Aires, Argentina	<a href="#">First Latin-American Congress on Urban Ecology</a> - Challenges and Development Scenarios for Latin American Cities
14-15	Buenos Aires, Argentina	<a href="#">First International Course on Urban Ecology</a>
24-27	Chicago IL, USA	<a href="#">4<sup>th</sup> Urban Street Symposium</a>

### JULY 2012

1-3 <b>*NEW*</b>	Reston, VA, USA	<a href="#">COM.Geo 2012</a>
7-12	San Diego CA, USA	<a href="#">The Survey Summit</a>
23-27 <b>*NEW*</b>	San Diego CA, USA	<a href="#">ESRI User Conference 2012</a>

### AUGUST 2012

14-17	Río de Janeiro, Brazil	<a href="#">Latin America Geospatial Forum 2012</a>
-------	------------------------	---

### SEPTEMBER 2012

9-13 <b>*NEW*</b>	Lake Buena Vista FL, USA	<a href="#">National States Geographic Information Council Annual Meeting</a>
----------------------	--------------------------	---

[\(Back to top\)](#)

Please mention SDI-LAC as source of information in any correspondence you may have on items on this issue

To subscribe to SDI-LAC, please do so online at:  
<http://www.gsdi.org/newslist/gsdsubscribe.asp>  
 Nancy Aguirre, PAIGH, Editor [cnaquirre@ipgh.org](mailto:cnaquirre@ipgh.org)  
 Global Spatial Data Infrastructure Association,  
<http://www.gsdi.org>

DISCLAIMER:  
 GSDI, PAIGH and the Editor will not be held liable for any errors, mistakes, misprints or incorrect information.  
 Copyright © 2011. All rights reserved.