

Global Spatial Data Infrastructure Latin America and the Caribbean Newsletter

SDI-LAC

May

2013

Vol. 10, No.5

Spatial Data Infrastructure-Latin America and the Caribbean (SDI-LAC) is a regional, monthly, and free, electronic newsletter from the [Global Spatial Data Infrastructure Association](#) (GSDI). It focuses on aspects related with Spatial Data Infrastructure, and on GIS, remote sensing, and data management issues, related with SDI in Latin America and the Caribbean. It aims to raise awareness, provide useful information to strengthen national SDI initiatives, and support synchronization of regional efforts.



GSDI Definition

The [Pan-American Institute of Geography and History](#) (PAIGH), member organization of GSDI, and the [Permanent Committee on Geospatial Data Infrastructure for the Americas](#) (PC-IDEA), promote SDI development in the region. The newsletter is prepared by PAIGH for GSDI.

[Message from the Editor](#)

[Input to this Issue](#)

[Global and Regional SDI, News, Presentations](#)

[IGS News, Links, Publications](#)

[National SDI, News, Links, Presentations](#)

[Articles and Publications of the Month](#)

[Geospatial Research, Applications, Software, Data](#)

[Training and Funding Opportunities, Awards](#)

[Employment Opportunities](#)

[Other](#)

[Americas: Conferences, SDI Events](#) (Year [2013](#) and [2014](#))



Message from the Editor

This SDI-LAC issue highlights the following updates: The **Global and Regional SDI** section comprises the Call for Papers for GSDI 14 and AfricaGIS 2013 Conference; the GEO Challenge Grant; the 85th Anniversary of the PAIGH; GeoSUR's regional spatial data expansion; IDEZar in mobile devices; the OGC ILAF Corner; OGC's Directors election; and notes on relevant Conferences taking place worldwide. The **IGS section** includes comments on IGS Membership Renewal. The **National SDI** segment informs on the ongoing Cartographic Quality Control Standard of SUNIT, Bolivia; the New Topographic Maps at Scale of 1:250.000 of Ecuador; CNR-El Salvador launched GIS in the Cloud; and Jamaican National Spatial Plan, and Cadastral Mapping and Land Registration Projects. **Articles and Publications** of the month include the e-book on Servers programming maps to provide geographical data using free multidisciplinary technologies; free articles of the International Journal of Digital Earth; and an article on Open geospatial data: an assessment of global boundary datasets. **Geospatial Research and Applications** underline the launch of first Ecuadorian homemade satellite; the Risk Profile of Saint Lucia; Dragon Eye UAV for Volcanic research applications; the First Continental Ecological Observatory of USA; and the NASA HyspIRI satellite to determine the spectral and thermal characteristics of the world's ecosystems. The **Training and Funding Opportunities** section encompasses calls for national and international initiatives, among them, Prizes awarded by the PAIGH; and the Student Map App Challenge sponsored by

Google. Finally, several **Events taking place in the Americas** are listed in the last section.

Translation of SDI-LAC Portuguese is possible thanks to undergrad students from UNESP **Mateus de Barros Manhani** and **Esrom A. Rissate Júnior**, from UFPE **Caroline Martins** and the cartographic engineers: **Alexandre Scussel**, editorial assistant MundoGEO. **Annette Pic**, MSc in Remote Sensing; **Camila Bassetto Guedes**, advisor of the Operations Department of the DECEA; **Edilce Figueiredo Burity**, Technologist of IBGE/PE Geographic Information and Statistics; **Edmilson Martinho Volpi**, Natural Resources Secretary in SP; **Eduardo Freitas**, editor of the MundoGEO portal and magazine; **Flávio Porfírio**, UGP-Dam of the ITEP; **Juan Carlos Gironda Mamani**, a consultant in Geotechnology and IT solutions for Geoinformation; **Rodrigo Quirino** Technologist of IBGE/RJ Geographic Information and Statistics; **Silvana Camboim** Professor at UFPR; **Silvane Paixão**, PhD in Land Administration and Land Information Management. Under the general coordination of Silvane Paixão and review of Eduardo Freitas.

Back issues of the newsletter are at the GSDI website: <http://www.gsdi.org/newsletters.asp>

Editor, **Nancy Aguirre**, Pan-American Institute of Geography and History (PAIGH), <http://www.ipgh.org>, cnaguirre@ipgh.org

[\(Back to top\)](#)

Global Spatial Data Infrastructure Latin America and the Caribbean Newsletter

Input to this Issue

Thanks for their contributions to this SDI-LAC Newsletter issue to:

Peter Baumann	Professor of Computer Science, Jacobs University Bremen, Executive Director, rasdaman GmbH Bremen, Germany
Santiago Borrero	Secretary General, Pan-American Institute of Geography and History, PAIGH, Mexico
Arturo Brun-Martinez	Architect, Colombia
Joan Capdevila-Subirana	Regional Service of the National Geographic Institute in Catalunya, Spain
Rinku Roy Chowdhury	Assistant Professor, Department of Geography, Indiana University, USA
Jose Juan Flores	Consultant, Ministry of Lands, Plurinational State of Bolivia
Dieter Fritsch	Institute of Photogrammetry, University of Stuttgart, Germany
Kate Lance	GSDI listserv moderator, USA
Douglas Nebert	Lead Technical Architect, data.gov 2.0 at U.S. Geological Survey (USGS); Senior Advisor, Geospatial Technology at USGS/FGDC, USA
Harlan Onsrud	Harlan Onsrud, Executive Director, GSDI Association
Maribel Yasmina Santos	Secretary-elect AGILE Council, Association of Geographic Information Laboratories for Europe; Department of Information Systems, University of Minho, Portugal
Imma Serra	National Geographic Information Center, National Geographic Institute, Spain
M. Anwar Sounny-Slitine	University of Texas at Austin, Department of Geography and the Environment, USA
F. Javier Zarazaga-Soria	Associate Professor, IAAA laboratory, University of Zaragoza, Spain

[\(Back to top\)](#)

Global and Regional SDI, News, Presentations

AfricaGIS 2013

GSDI 14



UNECA Conference Center, Addis Ababa, Ethiopia
November 4-8, 2013

The Global Spatial Data Infrastructure Association (GSDI) - Advancing a Location Enabled World

Our Vision is a world where everyone can readily discover, access and apply geographic information to improve their daily lives.

Our Purpose is to encourage international cooperation that stimulates the implementation and development of national, regional and local spatial data infrastructures.

Our Mission is to advance geo-information best practices, knowledge sharing and capacity building for the improved sharing and application of geographic information.

Global Spatial Data Infrastructure Latin America and the Caribbean Newsletter

Invitation to the Global Geospatial Conference 2013 and Call for Abstracts Reminder

In case you have not been notified through another channel, we want to let you know that there are just few weeks left before the deadline for abstracts and full paper submissions for the combined AfricaGIS 2013 Conference and the GSDI 14 World Conference.

EIS-Africa, the GSDI Association, the International Geospatial Society, the United Nations Economic Commission for Africa (UNECA) and EiABC Addis Ababa University are hosting this combined conference, also known as Global Geospatial Conference 2013. It will be held at the UNECA Conference Center in Addis Abbaba, Ethiopia from November 4-8, 2013.

The Call for Papers may be found at <http://www.gsdi.org/gsdi14/papercall.html>. The deadline for abstracts and/or papers for oral presentations as well as several refereed and non-refereed publication outlets is **May 15**.

Although accepting abstracts on a wide range of topics, the joint conference theme is "Spatial Enablement in Support of Economic Development and Poverty Reduction".

The program features a rich range of plenary and technical sessions along with pre- and post-conference workshops, lightning rounds, business meetings, and social events. Highlights also include a major commercial exhibition and industry showcase.

Save the dates! Come and enjoy interacting with your professional peers from across Africa and the globe on 4-8 November 2013.

Important Links

Joint Conference Call for Abstracts and Papers: <http://www.gsdi.org/gsdiconf/gsdi14/papercall.html>

Conference Website: <http://www.gsdi.org/gsdi14>

Past GSDI World Conference Proceedings: <http://www.gsdi.org/gsdiConferences>

Past open access Books affiliated with the conference: <http://www.gsdi.org/openaccessbooks>

Other Important Dates: <http://www.gsdi.org/gsdiconf/gsdi14/dates.html>

Please note that all EIS-Africa and IGS members (from selected developing nations) will receive greatly reduced registration fees to attend the conference and exhibition.

GEO Challenge Grant

Source: Harlan Onsrud

The Group on Earth Observations (GEO) has contributed \$5,000 to help defray expenses of worthy applicants from economically disadvantaged nations in Africa to attend the combined AfricaGIS 2013 and GSDI 14 conference and training workshops before and after the conference. GEO would like to invite, encourage and challenge additional geospatial organizations and agencies from across the globe to make additional contributions.

To qualify to receive partial travel support, an applicant must have an abstract or paper accepted for the conference and be a resident in and citizen of any nation in Africa. Abstract submissions are due on or before **15 May 2013**. Representatives from contributing organizations will serve on the selection panel for participants to receive the travel support.

The Global Geospatial Conference 2013 will be held at the United Nations Economic Commission for Africa (UNECA) Conference Center in Addis Abbaba Ethiopia on 4-8 November 2013. Training workshops are scheduled to be held all day on Sunday November 3 and Friday November 8.

Global Spatial Data Infrastructure Latin America and the Caribbean Newsletter

If your organization can make a contribution to help support deserving peer professionals from across the African continent, please contact Sives Govender, Director, EIS-Africa, email: SGovender@eis-africa.org, phone: +27-12-3491068. If you are willing to fund and host a workshop, let him know that as well.

We look forward to seeing you in Addis Ababa in November 2013!

85th Anniversary of the Pan American Institute of Geography and History

Source: Santiago Borrero



The Pan-American Institute of Geography and History (PAIGH) was established on February 7, 1928; its headquarters were located in the city of Mexico. In 1949 the Institute signed an agreement with the Organization of American States (OAS), through which it became its first specialized agency. Since its foundation the PAIGH has supported and contributed decisively to the advancement of sciences that fall within its scope: Cartography, Geography, Geophysics, History and related sciences.

Moreover, based on the guidelines set out in the strategic plan "Pan-American Agenda 2010-2020", this Institute supports priority activities related to climate change, land use planning and disasters, and the development of Spatial Data Infrastructure in the region.

Renowned researchers and scientists, as well as the highest hierarchy authorities in the member states, have been major players in the evolution process of this institution.

Many years have passed and yet, the relevance and strategic importance of this Institute has been maintained and consolidated, based on the recognition of its transcendental mission through Technical Assistance Projects, Grants, Awards, Publications and regional initiatives for the development of its member countries.

The commemoration of the 85th Anniversary of the PAIGH will take place at its headquarters in Mexico City on **June 12, 2013**. During this event, the American Colonial History Award "Silvio Zavala", the Thought of the Americas Award "Leopoldo Zea", and the Award "Wallace W. Atwood" will be acknowledged.

We invite you to learn more about the PAIGH at: <http://www.ipgh.org>

GeoSUR expands its regional spatial data

Source: Santiago Borrero



GeoSUR Program operates and maintains the Geographic Information Network of Latin America and the Caribbean. More than eighty participating institutions operate map services that are currently linked to this Regional Portal. The network is decentralized, thus institutions operate and maintain their geoservices and data, whilst only other regional information is maintained directly by GeoSUR. For this region the GeoSUR Program GeoPortal provides access to spatial data locally, nationally and regionally. The data can be accessed via map viewers operated by participating institutions, the regional GeoSUR viewfinder or through metadata that describe the spatial data of the region. Using the GeoPortal requires no technical knowledge or specialized software. An Internet connection and browser suffice. The GeoPortal is free to access and use at no cost. GeoSUR Program is coordinated by CAF (Development Bank of Latin America) and the PAIGH (Pan-American Institute of Geography and History). On this occasion, GeoSUR is pleased to inform on the expansion of its regional spatial data. Deforestation, urban expansion, floods and ecosystems are some of the new regional geospatial data GeoSUR has incorporated. During the past year, with support from [Cartogeo](#), GeoSUR has added more than forty new regional maps to its viewer. The newly incorporated information is varied, and includes biodiversity data from [NatureServe](#), ecosystem maps of the [World Bank](#) and the [Andean Community](#), forests biomass and canopy height data of [NASA](#), land cover data from the [European Space Agency](#), [Worldclim](#) climate data,

Global Spatial Data Infrastructure Latin America and the Caribbean Newsletter

[OneGeology](#) initiative geological maps of South America, mineral resource maps and flood maps of USGS, and agriculture maps as well as land use data of Caribbean islands, among others. It is worth noting that some of these data provide regularly updated information, such as the maps of monthly deforestation of Gran Chaco contributed by [Guyra Paraguay](#), or the [Lincoln Institute](#) data on urban expansion of some cities in Latin America. All data is made available, for download or combination with other existing in the system. The increasing economic development in Latin America and the Caribbean region requires regional spatial data as tools to facilitate new development projects. In response to this need, the GeoSUR program increases the availability of public spatial data useful for the region's project planning. Access to and use of this information is free and available on the regional map viewer at www.geosur.info

IDEZar in mobile devices

Source: F. Javier Zarazaga-Soria

The Zaragoza City Council (Spain) has launched the gateway to its Web site (<http://www.zaragoza.es>) using Html5 technology. The geographic information provided by the Zaragoza City Council Spatial Data Infrastructure (IDEZar, <http://idezar.zaragoza.es>) is used as entry point to have access to the state of the City in real time. This information is available now from every mobile device now. This development has been done with the participation of the company GeoSpatiumLab (<http://geoslab.com>) and the Advanced Information System Laboratory from the University of Zaragoza (<http://iaaa.unizar.es>)

http://2.bp.blogspot.com/-AOFI36-QYXY/UUI27bFWIsI/AAAAAAAAAxs/bMX_yhdpLRE/s1600/home_mobile.PNG



OGC ILAF Corner - April 2013

Did you know that...

Source: Imma Serra and Joan Capdevila



In Ibero-America there are 22 member organizations of OGC (in Spain alone are 16). Listed below are organizations in Latin America with their type of membership.

- Mexico:
 - [CentroGeo](#) (NGO / Not For Profit Institute)
 - [National Institute of Statistics and Geography](#) (INEGI) (Associate)
 - [Mexico State Autonomous University](#) (University)
- Chile: [Ministry of National Heritage - SNIT Executive Secretary](#) (Associate)
- Colombia: [Geographic Institute "Agustín Codazzi"](#) (Associate)
- Brazil: [Fundação CPqD](#) (Research Institute / Not For Profit Institute)

ILAF wants to call and encourage organizations to participate and share experiences with the OGC development and objectives. Please log on to ILAF [website](#) or [subscribe](#) to the forum list at: [ila.forum \(at\) lists.opengeospatial.org](mailto:ila.forum@lists.opengeospatial.org)

OGC News

13/04: The OGC requests comment on Coordinate Reference System Extension to Web Coverage Service Interface Standard. [Link](#)

More on OGC at the Iberian and Latin American Forum [webpage!](#)

Global Spatial Data Infrastructure Latin America and the Caribbean Newsletter

The OGC Elects Directors

Source: Santiago Borrero

The Open Geospatial Consortium (OGC®) recently held its biennial election of directors. Of the 18 elected members of the consortium's 2010-2012 Board of Directors, 15 serving members were re-elected and three new members have been seated. The new OGC board members are Christopher Holmes, Walter Scott and Geoff Zeiss.

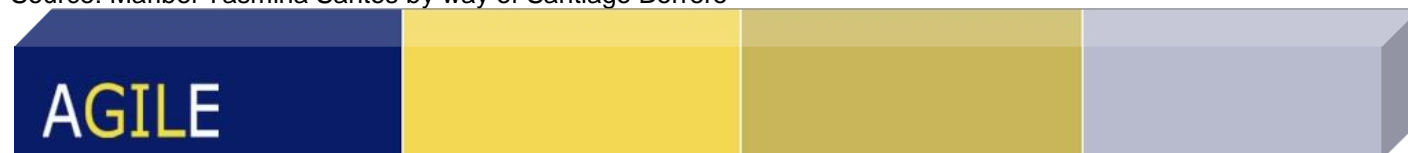
Chris Holmes is the Chairman and Founder of OpenGeo, a social enterprise that builds web-based geospatial technology. Chris is a Global Spatial Data Infrastructure Association (GSDI) Board Member, an Open Internet Tools Steering Committee Member, and the Chairman of the Project Steering Committee of GeoServer. He has given keynote addresses at geospatial and open source conferences around the world. Chris is a Stanford graduate and a 2005 Fulbright Scholar.

Dr. Walter S Scott is Executive Vice President and Chief Technical Officer of DigitalGlobe, which he founded in 1992. Dr. Scott is responsible for the development of its spaceborne imaging systems, US Government strategy, leadership of DG Labs (DigitalGlobe's R&D efforts), and technical oversight for engineering and technology across DigitalGlobe. Geoff Zeiss, Ph.D., is Principal at Between the Poles, a thought leadership consulting firm. Geoff has more than 20 years' experience in the geospatial industry and 15 years' experience working in enterprise geospatial infrastructure management with some of the largest utilities and communications organizations in the US and around the world, primarily as Director Utility Industry Program, Autodesk, Inc.

Two OGC staff members, Jeff Burnett and Mark Reichardt (also Chair of the Outreach and Membership Committee of GSDI), are members of the Board by appointment.

AGILE'13: Final Draft Programme and Key-notes

Source: Maribel Yasmina Santos by way of Santiago Borrero



Please find the final draft programme of the 16th AGILE Conference on Geographic Information Science, Geographic Information Science at the Heart of Europe, 14-17 May 2013, Leuven, Belgium, as well as the information about the four key-notes. This information will become available soon at the AGILE 2013 website (please visit <http://agile-online.org/>). The programme gives an overview of the schedule of the workshops (14/05) and conference days (15-17/05).

Reminder: UN/Germany Expert Meeting on Space-based Information for Early Warning Systems

Source: The UN-SPIDER team by way of Santiago Borrero



The dates for our UN/Germany UN-SPIDER Bonn Expert Meeting on Space-based Information for Early Warning Systems have been changed to 25-26 June 2013 shortly after the first announcement of the event in March. Please find below again all relevant facts for ease of reference.

Dates: 25-26 June 2013

Venue: UN Campus Bonn, Hermann-Ehlers-Str. 10, 53113 Bonn, Germany

Application Deadline: **15 May 2013**

Information and Online Application: www.un-spider.org/earlywarning

Should you have any questions regarding this event, please contact Ms. Antje HECHELTJEN (antje.hecheltjen@unoosa.org)

Global Spatial Data Infrastructure Latin America and the Caribbean Newsletter

Invitation to the 54th Photogrammetric Week in Stuttgart, September 9-13, 2013

Source: Dieter Fritsch by way of Santiago Borrero

This regular event was initiated by Carl Pulfrich as a "Vacation Course in Photogrammetry" in 1909; since 1973 it has been held at the University of Stuttgart. Today, the Photogrammetric Week Series enjoys international recognition as an upgrading seminar and a platform for the exchange of experience. It attracts since many years more than 500 participants from more than 50 countries. Its proceedings are well documented since 1975 on the Web (www.ifp.uni-stuttgart.de/phowo/index.en.html) and represent one of the best set of paper collections in the field of photogrammetry and related spatial sciences. This year the lectures by experts from Germany and abroad will be focused on the following topics:

- Data Collection -From Air, Space and Ground – An Update
- Advanced Methods of Computer Vision and Photogrammetry
- Solving the Future Mapping Problem, All About 3D Modelling

The presentations will be in English. Sufficient time will be allocated for discussions.

The scientific program and the demonstrations will be supplemented by fringe events in the evenings to offer sufficient opportunity for personal contacts and to renew friendship.

In addition, a tutorial on "All About 3D Modelling – From 2.5 Meshes to 3D Virtual Reality Models" will be held by the Institute for Photogrammetry (ifp), University of Stuttgart, on September 8, 2013.

[\(Back to top\)](#)

IGS News, Links, Publications



International
Geospatial Society



IGS Reminders – Membership Renewal

Source: News from the GSDI Association and the International Geospatial Society, Volume 3, Number 1, 2013

It is time to renew your membership in the International Geospatial Society (IGS). As a member you played a vital role in making the past year a great success.

Activities and Benefits

The International Geospatial Society (IGS) is the global society for geospatial specialists who want to affiliate with, help support, learn from and communicate with peer professionals across the world. Without the base financial support and volunteered personal time and effort of members the numerous activities in which IGS engages would not be possible. See a description of member benefits and the range of activities in which members have been engaged at <http://www.igeoss.org/BenefitsOfJoining>.

In terms of new initiatives, the organization was able to implement a program to allow geospatial specialists in developing nations to provide services in lieu of dues. Those services consist of providing or updating each year a personal professional profile in the geographic knowledge network. This effort has provided a much broader geographic distribution of representation in the organization. See the full list of members at <http://www.igeoss.org/members>.

We also expanded publication of GSDI and IGS Global News so it comes to you through email on a regular basis. The organization continues to advocate open access to geospatial conference proceedings, books, learning materials,

Global Spatial Data Infrastructure Latin America and the Caribbean Newsletter

newsletters and standards across global geospatial organizations to ensure that all are able to benefit from the resources being developed.

Submitting your Dues or Maintaining Free Membership

In order to renew your membership, please go to <http://www.igeoss.org/join> and pay the dues of \$US50 by credit card (\$25 for students). Dues payment is available only through use of a credit card. In the event that you are a citizen of and live within a qualifying economically disadvantaged nation, the online membership application at <http://www.igeoss.org/join> will provide you with the option of applying for free membership in IGS. The primary obligation is to provide the URL link to your professional profile in the GIKNetwork.

Information provided by Marilyn Gallant, GSDI Business Manager (mgallant@gsdi.org).

[\(Back to top\)](#)

National SDI, News, Links, Presentations

BOLIVIA

[The SUNIT Drives Forward Cartographic Quality Control Standard](#)

Source: Jose Juan Flores



On April 8, 2013 the Ministry of Lands of the Pluri-national State of Bolivia conducted an inter-agency meeting with members of the Technical Committee of the National Unified Land Information System (in Spanish SUNIT), with the aim of defining pertinent

management goals, and of maintaining and improving its coordination for the benefit of the country's georeferenced information users. The Minister of Lands, Jorge Barahona, welcomed members of the SUNIT Technical Committee, recognizing the importance of these coordination meetings, which will define the Working Plan that certainly include actions towards the "National Geo-referenced Information Users" on December 19, 2012, which identified important aspects to be improvement in the georeferenced information production, management and dissemination. Barahona pointed out that SUNIT consolidation is reflected with the addition of two new institutions: the Military Geographic Institute (in Spanish IGM) and the Vice Ministry of Civil Defense, which surely will provide significant contributions, thus adding to 16 Pluri-national State strategic institutions. The meeting was attended by representatives of SUNIT's member institutions: National Institute of Agrarian Reform (in Spanish INRA), National Institute of Agricultural and Forestry Innovation (in Spanish INIAF), National Naval Hydrographic Service (in Spanish SNHV), National Climate Change Programme (in Spanish PNCC), the Social Control Authority on Water and Sanitation, the Deputy Minister of Rural Development and Agriculture (in Spanish VDRA), National Irrigation Service (in Spanish SENARI), the National Protected Areas Service (in Spanish SERNAP), Deputy Minister of Water Resources and Irrigation, and the new members of the IGM and the Vice Ministry of Civil Defense. The Single Land Information System Unit under the Ministry of Lands presented a report on the National Plan for Soil Management and Conservation, a preliminary map on vulnerable areas to desertification, and a draft map of rural land value. The Soil Management and Conservation Plan aims to promote sustainable land use by way of recovering, preserving and improving soil productive capacity towards food security and wellbeing. Main tasks were identified during the meeting's conclusion including: information updating, fostering Cartographic Quality Control Regulations being developed under the auspices of IBNORCA, as well as certification and publication of new products for the benefit of georeferenced information users.

Global Spatial Data Infrastructure Latin America and the Caribbean Newsletter

ECUADOR

[New Topographic Maps at Scale of 1:250.000](#)

Source: <http://www.geoportaligm.gob.ec/>

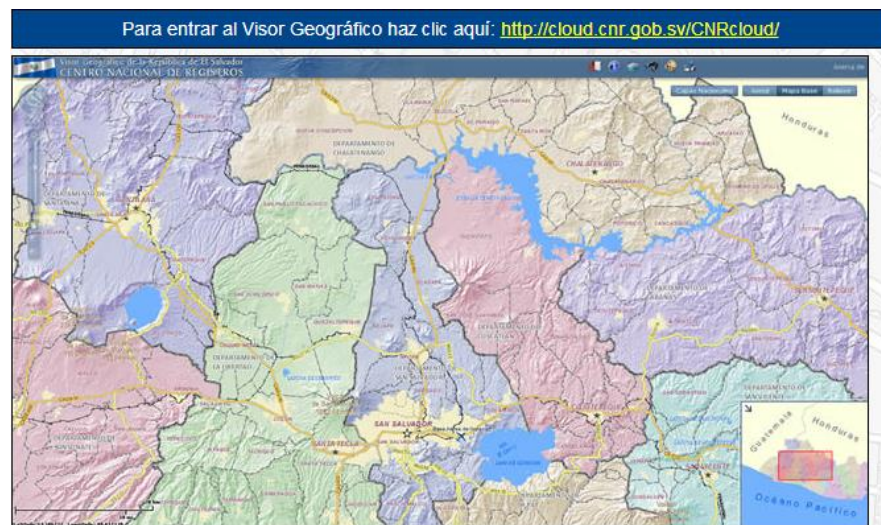
The Military Geographic Institute (in Spanish IGM) has provided for the general public the second version of the topographic maps of Ecuador at scale of 1:250.000 as the result of the 1:50.000 scale mapping generalization process undertaken by this Institute. This mapping includes 36 layers of continuous information in SHP format (compressed in zip format) available for download. The reference system of this mapping is WGS 84, UTM 17 South.

EL SALVADOR

CNR-EI Salvador develops GIS in the Cloud

Source: PAIGH-CAF-GeoSUR Geospatial Network of Latin America and the Caribbean

The National Registry Center of El Salvador, Headquarter of the National Geographic and Cadastral Institute, becomes the first in Latin America and the Caribbean region to develop geospatial information services in the cloud. After considerable preparatory effort led by Engineer Rigoberto Magana, Director of the National Geographic and Cadastral Institute (in Spanish IGCN) of the National Registration Center (NRC); once ready, it had full support of Dr. José Enrique Argumedo, Executive Director of the National Registry Center, which allowed developing this innovative activity both to El Salvador and the region.



The launch of the National Registry Center Geoportal in BETA version concludes this project, where you may visualize geographic information such as the official and topographic maps of the Republic of El Salvador both at scale of 1:200.000. According to announcement of Mr. Magaña, gradually, more geographic layers will be released, more and better services will be provided, and the BETA version of the Geoportal will be consolidated by way of the IGCN / CNR Territorial Systems Management Office.

This project that will place geospatial information and associated services of the Republic of El Salvador in the Cloud has had support of the Pan American Institute

of Geography and History (PAIGH) and the Development Bank of Latin America (in Spanish CAF), since its inception, as well as the enthusiastic participation of ESRI, a company led by Jack Dangermond, who from the beginning expressed interest in supporting initiatives in the Cloud by geographical institutes in the region. In the words of Santiago Borrero, Secretary General of PAIGH, and Eric van Praag, GeoSUR Program Coordinator, "Much of the future of these organizations depends on the way and intensity with which new technologies are addressed for spatial information management, as this new platform developed in the cloud has enabled." The initial, take-off phase of the project will last two years with financial, technological and institutional assets from IGCN / CNR, and support of PAIGH, CAF and ESRI. Please visit the BETA test site at:

http://www.cnr.gob.sv/index.php?option=com_content&view=article&id=953&Itemid=327

Geoportal log in at: <http://cloud.cnr.gob.sv/CNRcloud/>

Global Spatial Data Infrastructure Latin America and the Caribbean Newsletter

JAMAICA

[Jamaica: \\$30 Million Allocated for National Spatial Plan Project](#)

Source: Kate Lance



The Government of Jamaica has allocated some \$30 million for the continuation of works under the National Spatial Plan (NSP) project in the 2013/14 Estimates of Expenditure, now before the House of Representatives. The plan will provide the strategic framework to guide urban development and investment decision making. It will also ensure optimal use of the nation's land resources, and outline the framework for their effective use and management. Among the targets for this fiscal year are to: update and maintain geospatial datasets; prepare a first draft of the situational analysis report and consultation plan; the completion of several sector plans by the National Environment and Planning Agency (NEPA, <http://www.nepa.gov.jm/index.asp>); draft a national spatial plan (NSP); host 14 stakeholder consultation workshops; continue monitoring and review; and conduct growth centre surveys.

[Jamaica: \\$121 Million Earmarked for Cadastral Mapping and Land Registration Project](#): The Jamaican government has allocated some \$121 million to boost activities under the Cadastral Mapping and Land Registration project. The programme seeks to assist persons, particularly rural residents currently occupying lands but not in possession of titles for those properties, to formalise their holdings by providing them with those documents. This is expected to enable them to, among other things, access capital to undertake and improve farming activities, thereby empowering them through economic development. For this fiscal year, the Government intends to provide documents required for title application inclusive of cadastral surveys and maps, to 1,000 poor settlers in the project areas of St. Mary, St. Ann and Portland. Also under the project, digital cadastral maps and hard copies for all parcels surveyed will be supplied; training programmes will be undertaken for approximately 50 persons; while a completion ceremony will be held, and commemorative plate installed.

[\(Back to top\)](#)

Articles and Publications of the Month

e-book: Servers programming maps to provide geographical data using free multidisciplinary technologies

Published by Empresa Brasileira de Pesquisa Agropecuária EMBRAPA

Source: <http://www.idesf.santafe.gov.ar/idesf/>

Excerpt from the author's introduction: The increasing use of geotechnology has enabled the production of cartographic databases that gather great diversity of multidisciplinary geographic information. However, the publication or availability of this information to society in general is still poor, mainly due to the lack of resources for acquiring proprietary software and contracting professionals with technological expertise for integrated application programming that use free computational tools. Map servers can integrate both dynamic geographic information represented by thematic maps (derived from abstract and simplified land surface models), as well as satellite images, orthorectified aerial photographs, and georeferenced 3D or virtual reality models. Within this context, procedures are presented for developing a map server for providing digital cartographic databases on the World Wide Web in an interactive and dynamic way, and using free software. Routines are proposed for configuration of the software used, preparation and implementation of the cartographic map server on Windows and Linux, thus allowing spatial information integration from different multidisciplinary geographic sources and of various digital formats. [Full text may be found at: http://geoportal.cnpm.embrapa.br/EMBRAPA_data/Servidores_de_Mapas_fernando_et_al.pdf]



Global Spatial Data Infrastructure Latin America and the Caribbean Newsletter

International Journal of Digital Earth Editors' Choice

Source: PPGIS.net



To give you a taste of the content in International Journal of Digital Earth, the Editors have highlighted a selection of significant articles to aid your research. These articles have been made FREE for you until the end of 2013: <http://explore.tandfonline.com/content/est/tjde-editors-choice.php>

[Open geospatial data: an assessment of global boundary datasets](#)

Source: Kate Lance



Abstract: The visualization of sub-national data is a phenomenon that is shaping conversations in the context of development. The World Bank has published interactive maps of sub-national project locations and development indicators in 142 countries on its Mapping for Results (M4R) platform. This paper evaluates the accuracy and usability of three global administrative boundary datasets used in geovisualizing data: (1) Global Administrative Unit Layers (GAUL), (2) Database of Global Administrative Areas (GADM), and (3) the United Nations Second Administrative Level Boundaries dataset (UNSALB). [Full paper may be found at: <http://www.scribd.com/doc/126694489/Open-Geospatial-Data-an-Assessment-of-Global-Boundary-Datasets>]

[\(Back to top\)](#)

Geospatial Research, Applications, Software, Data

[Ecuador launched first homemade satellite](#)

Source: <http://mundogeo.com/>

Ecuador launched first homemade satellite from China, President Rafael Correa announced. "It's not a satellite bought in another country, it's a satellite made in Ecuador," Correa said proudly during his weekly address of the homegrown engineering team. The "Pegaso" (pegasus) nanosatellite was launched from China aboard an unmanned rocket on April 26. Measuring just 10 by 10 by 75 centimeters (four by four by 30 inches), and weighing 1.2 kilograms (2.6 pounds), Pegaso will beam live video images back to Earth from an onboard camera. The Ecuadoran Space Agency plans a second satellite launch in July.

Risk Profile of Saint Lucia

Source: NEMO News

File : /SLU_DRR_Profile.pdf

Uploaded by : slunemo <slunemo@yahoo.com>

Description : The Country Profile for Disaster Risk Reduction for Saint Lucia was compiled through financial support under the United Nations International Strategy for Disaster Risk Reduction, Disaster Preparedness and Prevention's European Commission for Humanitarian Aid (UNISDR-DIPECHO) Project. The principal objective of this project is to contribute to "Building the resilience of nations and communities to disasters by increasing awareness surrounding the importance of disaster risk reduction throughout the Caribbean." You can access the file at the URL: http://groups.yahoo.com/group/slunemo/files/SLU_DRR_Profile.pdf

[NASA Flies Dragon Eye UAV into Volcanic Plume](#)

Source: <http://www.gim-international.com/>

In March 2013, NASA Earth science researchers travelled to the Turrialba Volcano, near San José, Costa Rica, to fly a Dragon Eye unmanned aerial vehicle (UAV) into the volcano's sulphur dioxide plume and over its summit crater in order to study Turrialba's chemical environment. The project is designed to improve the remote-sensing capability of satellites and computer models of volcanic activity. The study, called "In Situ Validation and Calibration of Remotely Sensed Volcanic Emission Data and Models", launched 10 flights between 11 and 14 March into the volcanic plume and along the rim of the Turrialba summit crater approximately 10,500 feet (3,2km) above sea level (ASL). The launch site was located at 8,900 feet ASL, and flights ranged up to 12,500 feet ASL, more than 2,000 feet above the Turrialba

Global Spatial Data Infrastructure Latin America and the Caribbean Newsletter

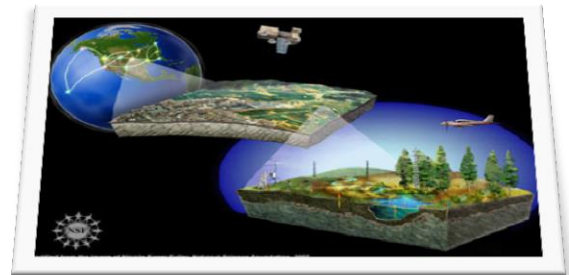
summit. Project objectives included improving satellite data research products, such as maps of concentration and distribution of volcanic gases, and transport-pathway models of volcanic plumes. This project is great example of how unmanned aircraft can be used for beneficial civilian purposes – in this case for better understanding Earth system processes and the impact of volcanism on the atmosphere, commented Matthew Fladeland, airborne science manager at Ames. By taking these retired military tools, it is possible to very efficiently and effectively collect measurements that improve NASA satellite data and aviation safety. The volcanoes of Costa Rica provide superb natural laboratories to test and develop these volcanological UAV systems.



[The First Continental Ecological Observatory, USA](#)

Source: Arturo Brun-Martinez

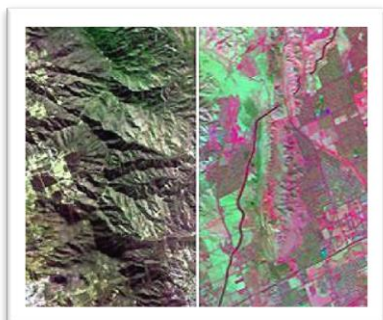
The National Ecological Observatory Network (NEON) is a continental-scale observatory designed to gather and provide 30 years of ecological data on the impacts of climate change, land use change and invasive species on natural resources and biodiversity. NEON is a project of the National Science Foundation, with many other U.S. agencies and NGOs cooperating. All NEON data and information products will be freely available via the Web. NEON's open-access approach to its data and information products will enable scientists, educators, planners, decision makers and the public to map, understand and predict the effects of human activities on ecology and effectively address critical ecological questions and issues. NEON will be the first observatory designed to detect and enable forecasting of ecological change at continental scales over multiple decades. NEON will use distributed sensor networks, coordinated airborne observations and experiments, linked by advanced cyberinfrastructure, to collect ecological data across the continental United States, Alaska, Hawaii and Puerto Rico. More in-depth detail about NEON's design and strategy plans can be found in "The NEON Strategy." NEON has partitioned the U. S. into 20 eco-climatic domains, each of which represents different regions of vegetation, landforms, climate, and ecosystem performance. In those domains, NEON will collect site-based data about climate and atmosphere, soils and streams and ponds, and a variety of organisms. Additionally, NEON will provide a wealth of regional and national-scale data from airborne observations and geographical data collected by Federal agencies and processed by NEON to be accessible and useful to the ecological research community. NEON will also manage a long-term multi-site stream experiment and provide a platform for future observations and experiments proposed by the scientific community. The data collected and generated across NEON's network – all day, every day, over a period of 30 years - will be synthesized into information products that can be used to describe changes in the nation's ecosystem through space and time. It will be readily available in many formats to scientists, educators, students, decision makers and the general public.



[NASA's HypsIRI: Seeing the Forest and the Trees and More](#)

Source: <http://www.spacedaily.com/>

To Robert Green, light contains more than meets the eye: It contains fingerprints of materials that can be detected by sensors that capture the unique set of reflected wavelengths. Scientists have used the technique, called imaging spectroscopy, to learn about water on the moon, minerals on Mars and the composition of exoplanets. "We have ideas about what makes up Earth's ecosystems and how they function," said Green, of NASA's Jet Propulsion Laboratory in Pasadena, California, and principal investigator of the campaign's Airborne Visible/Infrared Imaging Spectrometer (AVIRIS) instrument. "But a comprehensive understanding requires us to directly measure these things and how they change over landscapes and from season to season." Toward that goal, scientists and engineers ultimately



Global Spatial Data Infrastructure Latin America and the Caribbean Newsletter

plan to launch the HypSIRI satellite - a mission recommended by the 2007 National Academy of Sciences Decadal Survey - to determine the spectral and thermal characteristics of the world's ecosystems, which are sensitive to changes in vegetation health, as well as detecting and understanding changes in other surface phenomena including volcanoes, wildfires and droughts. The point of HypSIRI, however, is to collect and transmit all of the wavelengths, from the visible to the short wavelength infrared as well as selected wavelengths in the thermal-infrared, revealing the unique spectral signature of the light in each pixel. The signature is akin to a fingerprint, from which scientists can make more quantitative assessments of ecosystems. "With imaging spectroscopy we can unambiguously understand what things are from aircraft at an altitude of 65,000 feet, as revealed by the molecular and light-scattering characteristics, which determine the material's spectral fingerprint," Green said. This airborne science mission continues with the collection of additional imagery later this year and in 2014.

[\(Back to top\)](#)

Training and Funding Opportunities, Awards

Prizes awarded by the PAIGH

Source: Santiago Borrero

Calls are open for the following awards:

"Carlos A. Carvallo Yáñez" Award

It is granted to the original work in the field of cartography. The elements to be evaluated are: clarity and timeliness of the concepts presented, methodological and technological development, implementation or use possibilities in the Member States of PAIGH regardless of specific brands, equipment or software.

"Arch C. Gerlach" Award

Granted to the work recognized by the jury as the highest value and importance to the development of Geography in America, which constitutes a significant contribution to scientific development regardless of the topics addressed, as long as these are related to disciplines covered by the Geography Commission.

"Luiz Muniz Barreto" Award

It is delivered by the Geophysics Commission to the work which contributes to scientific development and that provides greater value and importance to the development of geophysics its allied sciences in America. Please submit nominations by **June 28, 2013**.

Pan-American Medal of PAIGH

It honors a scientist of the Member States of PAIGH that stands out for his career in any of the fields of interest of the Institute: Cartography, Geography, History, and Geophysics. The Medal may be awarded for each of the four respective Commissions. Submissions will be received until **August 30, 2013**.

Complete guidelines for each award may be found at: <http://www.ipgh.org/Premios/default.html>. For more information please contact: premios@ipgh.org

OGC Announces Student Map App Challenge, sponsored by Google

Source: Douglas Nebert



The Open Geospatial Consortium (OGC®) announces the OGC Student Map App Challenge, sponsored by Google, an OGC Principal Member. The Student Map App Challenge is a contest for students who have programming skills and an interest in maps and location services. Open standards from the OGC unlock the potential of the "spatial Web," creating opportunities for app developers to make all kinds of location information available to users, independent of platform. The OGC has launched the Student Map App Challenge to make entrepreneurial students aware of the enormous social and commercial potential of these

open standards. Three winning applicants will receive an OGC Student Map App Challenge Award and the opportunity to have their apps featured on the OGC website and in other media channels. Apps can make use of hundreds of public and private sector map data sources that are accessible through server-side implementations of OGC standards. These include weather, navigation, demographics, sensors, webcams, commercial establishments, hydrology, bird counts, accident statistics and many other kinds of data. [The OGC Student Map App Challenge page](#) provides search tools that can be used to find these existing OGC service instances. Most of these have no restrictions

Global Spatial Data Infrastructure Latin America and the Caribbean Newsletter

or few restrictions on their use, and thus they provide countless opportunities for mapping apps and location service apps. Students don't need to rely on others' data, however. Sources of spatial data that are not now accessible through OGC's open interfaces and encodings can be made accessible by students who develop server interfaces as well as client apps. Students must [register](#) by **15 June** 2013 and submit their apps by **15 July** 2013. Contestants and the public will be notified of the results on 30 August 2013. Visit the OGC website at <http://www.opengeospatial.org/contact>.

[Big Earth Data: the programming contest](#)

Source: Peter Baumann by way of Santiago Borrero



In the context of the European Space Agency (ESA) BigDataFromSpace Conference (<http://congrexprojects.com/13c10/>), the EarthServer initiative (<http://www.earthserver.eu>) is sponsoring a programming contest (http://www.earthserver.eu/BigDataFromSpace_contest) to establish innovative and surprising applications on multi-dimensional Earth data. The contest is supported by Jacobs University, rasdaman, ESA, and the European Commission. Students worldwide are invited to build apps/clients for Big Earth Data. A variety of large datasets, ranging from 2-D through 4-D, is provided for your perusal. No need for downloading, though - the rasdaman (<http://www.rasdaman.org>) Array Database System (http://en.wikipedia.org/wiki/Array_DBMS) gives versatile, fast query access on massive multi-dimensional raster data based on the OGC Web Coverage Processing Service (WCPS) open query standard (http://en.wikipedia.org/wiki/Web_Coverage_Processing_Service). Clients compose query strings (typically from graphical user interaction), send them to the server for evaluation, and visualize the results coming back. To ease client development, a versatile Web development toolkit is provided, offering input widgets like sliders and gauges as well as output widgets for diagramming, image display, and more. Any common client platform technology (Android, iOS, HTML5, X3D, ...) is acceptable as long as there is open-source support for it.

4th Open Source Opportunities in GIS Summer School

Source: Maribel Yasmina Santos by way of Santiago Borrero



The 4th Open Source Opportunities in GIS Summer School in Girona (Spain) is organized by the GIS and Remote Sensing Centre (SIGTE) of the University of Girona and the collaboration of the Geospatial Institute of the University of Nottingham and OpenGeo, that will take place from 8th to 12th of July 2013. Website: <http://www.sigte.udg.edu/summerschool2013/>. Regular registration: until **15th June**

Funded MA/Ph.D. positions at Indiana University Geography

Source: Rinku Roy Chowdhury

Because of available grants and teaching assistantships, the Indiana University Department of Geography has a few more funded graduate student lines, and is thus reopening the graduate admission process. Between Anthropology and Geography, there is a strong base on Land Change Science and Cultural/Political Ecology, which is also complemented by additional departments and Schools within Indiana University.

Majed Akhter (starting in the fall, <http://geography.arizona.edu/majed-akhter>)

Eduardo Brondizio (<http://www.indiana.edu/~anthro/people/faculty/ebrondiz.shtml>)

Tom Evans (<http://www.indiana.edu/~geog/people/evans.shtml>)

Global Spatial Data Infrastructure Latin America and the Caribbean Newsletter

Shane Greene (<http://www.indiana.edu/~anthro/people/faculty/lsgreene.shtml>)

Rebecca Lave (<http://mypage.iu.edu/~rlave/index.html>)

Rinku Roy Chowdhury (<http://www.indiana.edu/~geog/people/roychowdhury.shtml>)

Catherine Tucker (<http://www.indiana.edu/~act/assoc-faculty/catherine-tucker.php>)

Two years of funding for MA students and four for Ph.D. students are guaranteed. Please contact any on the above list for more information.

Joint Programmes including scholarships

Source: http://eacea.ec.europa.eu/erasmus_mundus/



This Action will foster cooperation between higher education institutions and academic staff in Europe and Third Countries with a view to creating poles of excellence and providing highly trained human resources. Joint programmes of outstanding academic quality are designed and implemented by a consortium of European universities from at least three different countries. Consortia may also include universities from other parts of the world. Scholarships / fellowships are open to higher education students and academics from all over the world. Programmes include obligatory study and research periods, in at least two universities, and award

recognised double, multiple or joint degrees.

Action 1 provides:

Support for high-quality joint programmes – [Erasmus Mundus Masters courses](#) (Action 1 A) and [Erasmus Mundus Joint Doctorates](#) (Action 1 B) – offered by a consortium of European, and possibly third-country, higher education institutions. Other types of organisations concerned by the content and outcomes of the joint programme can participate in the consortium.

Click [here](#) for a quick guide on how to apply for a scholarship.

Free Webinars on Solving Data Challenges with Feature Manipulation Engine (FME)

Source: <http://www.safe.com/>

You may register to upcoming webinars or view recorded webinars including:

Microsoft SQL Server – How to Improve Interoperability using FME

Reading and Writing XML with FME

Oracle Database – How to Improve Interoperability using FME

PostGIS 2.0 – How to Improve Interoperability using FME

How to Load Spatial and Non-Spatial Data into Teradata using FME

How to Efficiently Transform Non-Spatial Data using FME

Gain Total Control of Your LiDAR and Point Cloud Data

Deep Dive into FME Server 2013

Deep Dive into FME Desktop 2013

Harmonise Your Spatial Data for INSPIRE with FME

[\(Back to top\)](#)

Employment Opportunities

Postdoctoral Researcher School of the Coast and Environment/Environmental Sciences

Source: M. Anwar Sounny-Slitine

LSU

School of the Coast and Environment

The Department of Environmental Sciences within the Louisiana State University (LSU) School of the Coast and Environment is seeking a Postdoctoral Researcher to conduct research on coastal vulnerability, resilience, and sustainability. The position is renewable for two years and is funded by the National Science Foundation. More

Global Spatial Data Infrastructure Latin America and the Caribbean Newsletter

background on the principal investigator and related research projects can be found at: <http://www.environmental.lsu.edu/lam.shtml> or <http://www.rsgis.envs.lsu.edu/projects.asp>. Apply online at: <https://lsusystemcareers.lsu.edu/applicants/Central?quickFind=55815>. Position #037144.

UNDP Vacant Position

Source: NEMO News

The United Nations Development Program (UNDP) is pleased to announce the Vacant Position of Interim Director Caribbean Tsunami Information Centre (CTIC). For further details, please visit the website [here](#). Deadline for receipt of applications is Friday **10 May** 2013.

Monitoring and Evaluation Specialist Consultancy

Source: Carib-coral-reefs list



The Nature Conservancy has received financing from the World Bank toward the cost of the Sustainable Financing and Management of Eastern Caribbean Marine Ecosystems Project and intends to apply part of the proceeds for consulting services. The Nature Conservancy invites eligible consulting firms ("Consultants") to apply for the Monitoring and Evaluation (Indicator Set) Specialist position. For more details, please review the Terms of Reference.

The expected duration of this consultancy is approximately seven months from the date of execution of contract. The purpose of this consultancy is to develop an Eco-Regional Monitoring Management and Evaluation Plan for the marine protected area systems of Participating Countries (Antigua & Barbuda, Grenada, St. Kitts & Nevis, St. Lucia, and St. Vincent & the Grenadines). This plan will outline (a) the biophysical and socio-economic indicators to use for each country or across countries to monitor the status of and trends in the protected areas systems, (b) how to collect these indicators, and (c) the roles, responsibilities and frequency for collection. If you are interested in providing the above services for this project, please send a letter of interest and curriculum vitae to arrive no later than May 10, 2013 to: Robbie Bovino, The Project Manager for the Sustainable Financing and Management of Eastern Caribbean Marine Ecosystems Project, The Nature Conservancy, Email: rbovino@tnc.org and Brittany Isabelle, Conservation Finance Administrative Assistant, The Nature Conservancy, Email: bisabelle@tnc.org

[\(Back to top\)](#)

Other

[Space Situational Awareness \(SSA\)](#)

Source: <http://www.astrium.eads.net/>



Space debris: a new economic debate. Looking after the space environment for the long term. Our modern societies are increasingly dependent on the applications provided by our space systems, in both the civil and military sectors. The purpose of Space Situational Awareness (SSA) is to be able to manage this space traffic and its growth. One of the main consequences of this utilisation of space by and for mankind is the build-up in the number of objects in orbit around the Earth. These objects are either active (satellites in operation) or inactive (satellites which are no longer functioning, debris resulting from orbital injection, from break-up or even from collision, etc.). In some cases, there is a risk of objects falling back to Earth. The purpose of Space Situational Awareness (SSA) is to be able to manage this space traffic and its growth, in order to guarantee not only the integrity of present and future space systems (in particular against the risk of collision), but also the

safety of the Earth's population and infrastructures against the risk posed by orbital debris. A service such as this, in many ways similar to motorway or air traffic control, requires measurement systems (radars, telescopes), means of interpreting data and predicting the situation in space and, finally, means of producing and providing services tailored to the institutional, private and defence user communities (overflight alerts, operation planning, collision alerts, re-entry

Global Spatial Data Infrastructure Latin America and the Caribbean Newsletter

alerts, manoeuvre planning, and so on). Both the United States and Russia have this type of capability and a number of investigations have been carried out in Europe since the 1990s (institutional, defence and private sectors) aimed at enabling it to acquire a similar, independent, yet complementary capacity, within the framework of international cooperative agreements: [ESA's Space Situational Awareness Preparatory Programme](#).

[\(Back to top\)](#)

Americas: Conferences, SDI Events

[Location Intelligence Conference Brazil](#) and [MundoGEO#Connect LatinAmerica](#)

Source: Location Intelligence Brazil



This year *Directions Magazine* and MundoGEO are joined to promote the Location Intelligence Conference, to be held on June 19 alongside [MundoGEO#Connect LatinAmerica](#), in São Paulo (SP), Brazil. All lectures will be available in three languages: Portuguese, English and Spanish. The conference theme is: Location-based Technologies Applied to Businesses in Latin America. Experts in the field of geospatial technologies and businesses will be present to give talks on topics including: GIS Application to businesses; Geospatial Cloud Computing; LBS Applications and geolocation-based advertising; Integration with smart business solutions; Predictive analysis and modeling; Mobile Location-based Marketing; Operational Intelligence; and Visualization and modeling. See the [Agenda](#). Please contact info@locationintelligence.net for details on sponsorship opportunities.

[CaGIS/ASPRS 2013 Specialty Conference](#)

Source: <http://www.asprs.org>



Call for Abstracts is now open. The Conference will be held on October 27-31, 2013 in San Antonio, Texas, USA. [Click Here to Submit Your Abstracts Online](#). The conference theme is: Imaging and Mapping for Disaster Management: From the Individual to the Global Community, which asks the critical emergency preparedness questions: Where did the event occur?

Where are people in relation to the event? How fast/far/in what direction is the event moving? Where and by what route can people (and animals, supplies, relief workers, and aid) come into or leave the area of an event? The critical component necessary to answer all of these questions is accurate, current geospatial information. This conference will explore the wide range of tools, technology, and applications employed to prevent, prepare for, and respond to emergencies of local, national, and global scales. For a complete list of the relevant topic and categories, please visit the [Conference Web Site here](#).

[The Esri UC agenda is live. Welcome to mapvana.](#)

Source: ESRI, newsletter@esri.com



Esri International User Conference (ESRI UC) will take place on July 6-12, 2013 in San Diego, CA, USA. The 2013 Esri International User Conference (Esri UC) is sourcing a world of moderated paper sessions, technical workshops, demo theaters, and plenary talks to GIS's main stage. Time to meet ArcGIS 10.2, developers.esri.com, and the ArcGIS platform breakthroughs that are helping you put geography to work: Learn new GIS techniques from more than 700 technical sessions which include workshops and demo theater presentations; Discover new answers by collaborating with GIS innovators in more than 300 moderated paper sessions; Explore leading-edge solutions within 20 software islands and the world's largest GIS EXPO with more than 330 exhibits. See the [Agenda at a Glance](#)

[\(Back to top\)](#)

Global Spatial Data Infrastructure Latin America and the Caribbean Newsletter

YEAR 2013

Year 2013 [January](#) [February](#) [March](#) [April](#) [May](#) [June](#) [July](#) [August](#) [September](#) [October](#) [November](#) [December](#)

MAY 2013

April 29 – May 1 *NEW*	Jacksonville FL, USA	SERUG - Southeast Region User Group Conference
3-5 *NEW*	Tegucigalpa, Honduras	14th Ibero-American Conference on Geographic Information Systems (CONFIBSIG)
5-10	Quito, Ecuador	Latin American Forum on Noteworthy Instruments for Urban Intervention
5-8	Boise ID, USA	AASHTO GIS-T 2013
6-11	Córdoba Argentina	6th CPCI General Assembly and 3rd Provincial Cadastre Meeting
7-8	Muncie IN, USA	2013 Indiana GIS Conference
7-9	Houston TX, USA	ESRI Petroleum GIS Conference
7-10	Havana, Cuba	Vegetable Biotechnology Congress
8-10	Santo Domingo, Dominican Republic	Call for International Seminar: Poverty, Inequality and Health in Latin America and the Caribbean: Overcoming whirled
13	San Antonio TX, USA	URISA LeadershipAcademy 2013
14-16	Redlands CA, USA	ESRI Forestry GIS Conference
14-17	Cancun, Mexico	Meeting of theAméricas AGU
14-17	Cancun, Mexico	Earthquakes and Tsunamis - Historical and Geological Records & Modeling at the AGU Meeting of the Americas
15-17	Webinar	IV National Working days on Social History and Second Meeting of the International Network of Social History
16-17 *NEW*	Mendoza, Argentina	First Congress onTransport, Sustainability and Land
17-27	San Francisco CA, USA	International Conference on Software Engineering - ICSE 2013
19-22	Ocho Ríos, Jamaica	IFIP 12th International Conference on Social Implications of Computers in Developing Countries
20	San Francisco CA, USA	GTSE 2013 Workshop collocated with ICSE 2013
20-22	Washington DC, USA	Location Intelligence &Oracle Spatial and Graph User Conference
20-23	Cincinnati OH, USA	World Environmental & Water Resources Congress 2013
21-23	Washington DC, USA	UCGIS 2013 Symposium
21-24 *UPDATED*	Denver CO, USA	2013 The National Map Users Conference and Community for Data Integration Workshop and Training <i>This event has been postponed.</i>
22-24	Ciudad de General Roca, Argentina	II Iberoamerican Meeting on Policy Management and Cultural Industries "Promoting Rights through Culture"
23 *NEW*	Charlotte NC, USA	Webinar: ArcGIS Online - Transforming Your Organization
26	San Francisco CA, USA	GTSE 2013, SEMAT Workshop on a General Theory of Software Engineering (GTSE)
28-30	Buenos Aires, Argentina	Argentinean Congress on Landscape Ecology CAEP 2013
May 28-Jun.1	Lawrence KS,USA	Changing Nature: Migrations, Energies, Limits
May 30-Jun.1 *UPDATED*	Villa Mercedes, San Luis. Argentina	XXII Geography Teachers National Meeting and VII Regional Tourism and Geography Working days "Reassessing spaces, histories and identities"

JUNE 2013

2-26	San José, Costa Rica	34th International Course on Protected Areas and Biological Corridors: Tools for Mitigation and Adaptation to Climate Change
3-5	State College PA, USA	2013 PA GIS Conference
3-6	Las Vegas, NV, USA	Hexagon 2013
8-9	San Francisco CA, USA	OpenStreetMap's Annual U.S. State of the Map Conference
9-11 *NEW*	Austin TX, USA	67th International Convention-Forest Products Society
Jun 10 – Jul 25	Atlanta GA, USA	Research Experiences for Undergraduates (REU) Site: Addressing Social and Environmental Disparities through Community Geography and Geographic Information Systems
12-14	México City, México	SIGSA/ESRIUsers National Meeting 2013
12-15	San Jose, Costa Rica	Third IUFRO Latin American Congress

Global Spatial Data Infrastructure Latin America and the Caribbean Newsletter

13	Caracas, Venezuela	Esri User Conference and National Envi 2013
17-20	Miami FL, USA	URISA's GIS in Public Health Conference
17-20 *NEW*	Tyler TX, USA	The 24th Biannual SaGES Colloquium & FIG Regional Conference
18-21	Sao Paulo, Brazil	MundoGEO#ConnectLatin America 2013
19-20	São Paulo, Brazil	Location Intelligence Brazil
20 *NEW*	Charlotte NC, USA	Webinar: Imagery and LiDAR in ArcGIS 10.1
18-21	Victoria BC, Canada	CoastGIS 2013 Conference: Monitoring and Adapting to Change on the Coast The 11th International Symposium for GIS and Computer Cartography for Coastal Zone Management
19	Sao Paulo, Brazil	Location Intelligence Brazil
25-27	Toronto, Canada	Optech Third Imaging and Lidar Solutions Conference, ILSC 2013
27-30 *NUEVO*	La Paz, Bolivia	I International Fair of Energy, Environment & Water

JULY 2013

Jul.1 – Sep. 30	On line	Learning Course: Integrated watershed management
Jul. 3 – Aug. 3	Fort Collins CO, USA	ProtectedArea Management Course
3-5 *NEW*	Tegucigalpa, Honduras	14th Iberoamerican Conference on Geographic Information Systems (CONFIBSIG)
6-9	San Diego CA, USA	ESRI Education GIS Conference
6-9	San Diego CA, USA	ESRI Survey Summit
7-9	San Diego CA, USA	ESRI Business and Location Analytics Summit
7-12	East Lansing MI, USA	15th International Medical Geography Symposium (IMGS 2013)
8-12	San Diego CA, USA	ESRI International UserConference
8-13	Cartago, Turrialba, Costa Rica	IX International Course Tools for Carbon Sequestration Monitoring Systems Land Use
10	Montreal QC, Canada	CSWS 2013 Fourth Canadian Semantic Web Symposium
15-25	Cartago, Turrialba, Costa Rica	International Course: Extension methodologies for sustainable rural development
16-18 *NEW*	Atlanta GA, USA	Business Continuity & Organizational Resilience for Utilities Conference
22-24	San Jose CA, USA	COM.Geo 2013
22-26	San Diego CA, USA	CMSC 2013
22-26	Rockport Maine, USA	2013 MAPPS SummerConference
23-26	Barquisimeto, Venezuela	5th International Congress on Historical Sciences in Venezuela (1st Call)

AUGUST 2013

1-4	Denver CO, USA	NCGE 2013 National Conference on Geography Education
11-15	Newfoundland and Labrador, Canada	Canadian Association of Geographers 2013 Annual Meeting More: http://www.mun.ca/cag2013/
12-23	Cartago, Turrialba, Costa Rica	14th International Course economic and institutional foundations for the Management and Assessment of Environmental Services
14-16 *NUEVO*	Cancun, Mexico	LACCEI 2013
21-24	Colorado Springs, CO USA	GeoGathering 2013
25-29	Arlington VA, USA	Advances in Geospatial Technologies for Health
26-27	Raleigh NC, USA	2nd International Conference on Hydrology & Ground Water Expo
27-29 *NEW*	Victoria BC, Canada	34th Canadian Symposium on Remote Sensing
26-30	Turrialba, Costa Rica	V Adaptation to Climate Change International Course: The Role of Ecosystem Services
29-31	Ibagué, Colombia	20th Colombian Congress of Geography

SEPTEMBER 2013

Sep. 2 – Nov.25	Turrialba, Costa Rica	E-Learning:Land use planning at the municipal level
7-10	Cambridge MA,USA	International Map Industry Association (IMIA) Americas Annual Meeting and Member Showcase

Global Spatial Data Infrastructure Latin America and the Caribbean Newsletter

8-10 *NEW*	Boston MA, USA	Map Conference
8-11	Daytona Beach FL, USA	Lucity Annual Conference and Training (ACT) 2013
9-13	Turrialba, Costa Rica	International Course of Forest Inventory Analysis Data
11-13	Rio de Janeiro, Brazil	Latin America Geospatial Forum 2013
16-17	Buenos Aires, Argentina	2nd UNI-COM Latin American Congress: Quality of Life in Latin America and the Caribbean
16-19	Providence RI, USA	GIS-Pro 2013: URISA's 51st Annual Conference for GIS Professionals
16-20 *NEW*	Nashville TN, USA EUA	ION GNSS+ 2013
16-27	Turrialba, Costa Rica	International Course: Using the SWAT Model as a tool for Watershed Management
17-20	La Plata, Argentina	7th Argentine Congress on Hydrogeology and 6th Hispano-Latin American Seminar on current topics in Groundwater Hydrology
23-25 *NEW*	Saint John, New Brunswick, Canada	Geomatics Atlantic 2013
23-25	Edmonton Alberta, Canada	Ga3 - Geospatial - anywhere, anytime for anyone
24-26	Atlanta GA, USA	Conferencia Servicio de Campo del Este 2013
25-28	Lake Tahoe CA, USA	AAG Pacific Coast Division Fall Regional Meeting
25-27	Manizales, Colombia	2nd Colombian Bioinformatics Computational Biology Congress (CCBCOL)
Sep.30-Oct.4	Turrialba, Costa Rica	Climate-smart Territories at the tropic. Information: conferenciawallace@catie.ac.cr

OCTOBER 2013

1-4 *NEW*	Manizales Caldas, Colombia	EIISI 2013 4th International Meeting and 7th National Engineering Research and Information Systems Meeting
1-5 *NEW*	Ciego de Ávila, Cuba	11th International Congress on Hydraulics engineering and 7th International Seminary on Integrated Water Use
3-4	Polvorines, Argentina	II National Congress on Geographic Information Technologies and II Days on Geographic Information Systems Deadline for abstracts (300 words): April 30, 2013. E mail: iicongresotig2013@gmail.com / infosig@unqs.edu.ar
4-5	Entre Ríos-Concordia, Argentina	26th Forestry Working Days from Entre Rios
6-10 *NEW*	Silicon Valley, CA USA	BigData 2013
7-31	Turrialba, Costa Rica	25th Intensive Course International Diversified Management of Natural Tropical Forests: Managing the Challenges of Climate Change
9-11	Buenos Aires, Argentina	4th Congress on Environmental Sciences
10-12	Omaha NE, USA	AAG Great Plains/Rocky Mountains Division Regional Meeting
10-13	Oakland CA, USA	North American Association for Environmental Education: 41st annual conference
14-17	Belize Ciity, Belize	ICRI 28th General Meeting (ICRI GM28)
15-19 *NEW*	Chillán, Chile	34th National Congress and 19th International Congress on Geography
16-18 *NEW*	Santiago, Chile	GENERA Latinoamérica 2013
16-18 *NEW*	Lima, Perú	Esri Latin America User Conference
16-18	Washington DC, USA	GIS in Transit Conference
17-19	Eau Claire WI, EUA USA	AAG West Lakes Division Regional Meeting
18-19	Worcester MA, USA	New England/St. Lawrence Valley (NESTVAL) Division Regional Meeting
21-25	Ibagué, Tolima	10th International Course Tools for Carbon Sequestration Monitoring Systems Land Use
22-25 *NEW*	Lima, Perú	5th International Congress on Computing and Telecommunications
23-25	Santiago de Chile, Chile	LARS Latin American Remote Sensing Week - 2013

Global Spatial Data Infrastructure Latin America and the Caribbean Newsletter

23-26	Mendoza, Argentina	4th National Congress on Geography of Public Universities and 10th Cuyanans Workings day The complexity, permanent attribute of geography science
24-26	Nacogdoches TX, USA	AAG Southwest Division (SWAAG) Annual Meeting
25-26	Toledo OH, USA	AAG East Lakes Division Regional Meeting (jointly with CAG, Ontario)
27-31	Kansas City MO, USA	National States Geographic Information Council (NSGIC) Annual Meeting 2013
Oct. 27 – Nov. 1	Burlingame CA, USA	ACM International Conference on Information and Knowledge Management (CIKM 2013)
Oct.30-Nov.2	Annapolis MD, USA	AAG Middle Atlantic Division Regional Meeting (jointly with AAG Applied Geography Specialty Group)
Oct.31-Nov.2	Tampa FL, USA	Fifty-fourth Annual Meeting Society for the History of Discoveries
Oct.31-Nov.3	Trevelin – Chubut, Argentina	International Congress of Geography / Geography Week 74

NOVEMBER 2013

4-8	Addis Abbaba, Ethiopia.	AfricaGIS 2013 Conference and the GSDI 14 World Conference
4-8	Turrialba, Costa Rica	Biodiversity Analysis: from Functional Diversity to Ecosystem Services
5-8	Orlando FL, USA	21st International Conference on Advances in Geographic Information Systems (ACM SIGSPATIAL GIS 2013)
6-9	Havana, Cuba	3rd International Congress on Local Development “For Local Sustainable Development”
13-14 *NEW*	Alexandria VA, USA	MAPPS International Market Conference – Entering and Expanding Global Business Opportunities
13-14 *NEW*	Alexandria VA, USA	International Conference on Exporting for Geospatial, Engineering and Related Services
13-16	Atlanta GA, USA	60th Annual North American Meetings of the Regional Science Association International
21-24	Chicago IL, USA	38th Annual Meeting of the Social Science History Association (SSHA)
24-26	Roanoke VA, USA	Southeast (SEDAAG) Division Regional Meeting
Nov. 25 – Dec.6	Turrialba, Costa Rica	International Course: Comprehensive Management of Irrigation: Resilience to natural hazards geological and climatic

DECEMBER 2013

2-6	Lima, Peru	15th UN Industrial Development Organization (UNIDO) Conference 2013
-----	------------	---

Year 2014

Year 2014 [January](#) February March April May June July August September October November December

JANUARY 2014

29-30 *NEW*	Redlands CA, USA	Geodesign Summit Asks Attendees to Reimagine Their World
-----------------------	------------------	--

[\(Back to top\)](#)

Global Spatial Data Infrastructure Latin America and the Caribbean Newsletter

Please mention SDI-LAC as source of information in any correspondence you may have on items on this issue

To subscribe to SDI-LAC, please do so online at:
<http://www.gsdi.org/newslist/gsdisubscribe.asp>
Nancy Aguirre, PAIGH, Editor cnaguirre@ipgh.org
Global Spatial Data Infrastructure Association,
<http://www.gsdi.org>

DISCLAIMER:

GSDI, PAIGH and the Editor will not be held liable for any errors, mistakes, misprints or incorrect information from third parties Copyright © 2013. All rights reserved.

[\(Back to top\)](#)