

THE LAND INFORMATION CENTER (LIC), DEPARTMENT OF LAND AND SURVEYS, MINISTRY OF  
NATURAL RESOURCES AND AGRICULTURE GRANT  
ATTACHMENT D

**GSDI SMALL GRANTS PROGRAM REPORT TEMPLATE**

Reports for 2014 GSDI Small Grants are due December 31, 2014. They should be in English and they should be sent digitally to [grants@godi.org](mailto:grants@godi.org). The required format is in a .PDF file or in .DOC or .RTF files with 12-point Times Roman or Arial font. Reports should be between two to four pages long and they should follow the template below.

-----

**2014 GSDI Small Grant Project Final Report**

**Title of Project/Activity**

Developing a Reliable Agriculture GIS Database for Belize through Partnership with Key Stakeholders

**Focal Point Institution**

Land Information Center (LIC), Department of Land and Surveys, Ministry of Natural Resources and Agriculture

**Contact Person (business street address, phone/fax, email, and website)**

Gina Young, Ag. Deputy Commissioner  
Department of Lands and Surveys, Ministry of Natural Resources and Agriculture,  
Queen Elizabeth Boulevard, City of Belmopan  
Phone: (501)828-5066  
Fax: (501)802-2333  
Email: [plio@mnra.gov.bz](mailto:plio@mnra.gov.bz) or [pp.planner@mnra.gov.bz](mailto:pp.planner@mnra.gov.bz)

**List of Collaborators (Contact Information)**

Department of Agriculture, Central Farm – Mrs. Fay Garnett, [fay.garnett@agriculture.gov.bz](mailto:fay.garnett@agriculture.gov.bz)  
University of Belize – Cecy Castillo, [ccastillo@ub.gov.bz](mailto:ccastillo@ub.gov.bz)  
Belize Livestock Producers Association – Alistair McPherson, [blpa@btl.net](mailto:blpa@btl.net)  
SIRDI – Marcos Osorio, [sirdi.belize@gmail.com](mailto:sirdi.belize@gmail.com)

**Summary of Deliverables as per Grant Proposal**

Data collection and standardization of Agricultural data  
Report on data integration and development of farms data  
Develop a comprehensive farms geodatabase to be uploaded on the NSDI Geoportal

**Itemized Use of Project's Budget (including summary of labor hours)**

Date	Description	Approx. Labor Hours
<b>8-Jul-14</b>	<b>GSDI Grant funds received</b>	
30-Jul-14	Hotel accommodation for 2 nights for <b>4</b> data collectors 30-31 July, 2014 in Corozal	16 hours per person for 3 days
16-Jul-14	Fuel for data collection in Corozal 15 gallons (without GST)	
14-Jul-14	Fuel for data collection in Corozal 10 gallons (without GST)	
16-Jul-14	GST on fuel for Corozal data collection at 12.5% of \$138.33 + \$91.89	
15-Aug-14	Food catering for GSDI NSDI Farms Stakeholder presentation	
14-Jul-14	Hotel accommodation for 2 nights for <b>3</b> data collectors 14 - 15 July, 2014 in Corozal	16 hours per person for 3 days
Jul-14 to Mar-15	Contribution from LIC staff (PLIO and SLIO)	12 days each x 2 hours (48 hrs)
Jul -14 to Aug -14	Preparation of stakeholder session and preparation of data by interns	10 days each x 8 hours (160 hrs)
Nov-14 to Mar-15	Contributions made by Principal Planner	20 hours
Jul-14 to Mar-15	Total Labour Hours for LSD Staff – this includes data collection from 3 staff members Jul-14 = 144 hours; other contributions from LIC staff = 48 hours; contribution from Principal Planner = 20 hours. Total = <b>212 hours</b> . This does not include contributions made by Interns (352 hours)	
<b>TOTAL</b>		<b>564 hours</b>

## **Timeline of Project**

Project commenced in July 2014 and was expected to be completed in December 2014

## **Potential or Actual Follow-up Activities**

- This project has the potential to expand to other areas or districts; there is a need to include other agricultural products such as Banana and Citrus.
- Integrate existing agriculture data available with NSDI stakeholders.
- Build on the farms geodatabase created and expand data collection.

## **Unanticipated obstacles you encountered**

- Farms data provided by stakeholders are not appropriate for mapping, it is mostly tabular data
- Lack of adequate support from key stakeholders
- Lack of expertise in the use of GPS and field data collection

## **Do you think you have reached your goal?**

- The goal has been partially reached; due to unforeseen circumstances the project was not fully completed.
- The farms geodatabase created has been uploaded to the NSDI geoportal (<http://geoserver.bnsdi.gov.bz/data/search>).

## **Photos, maps, graphics, or illustrations of project activities**

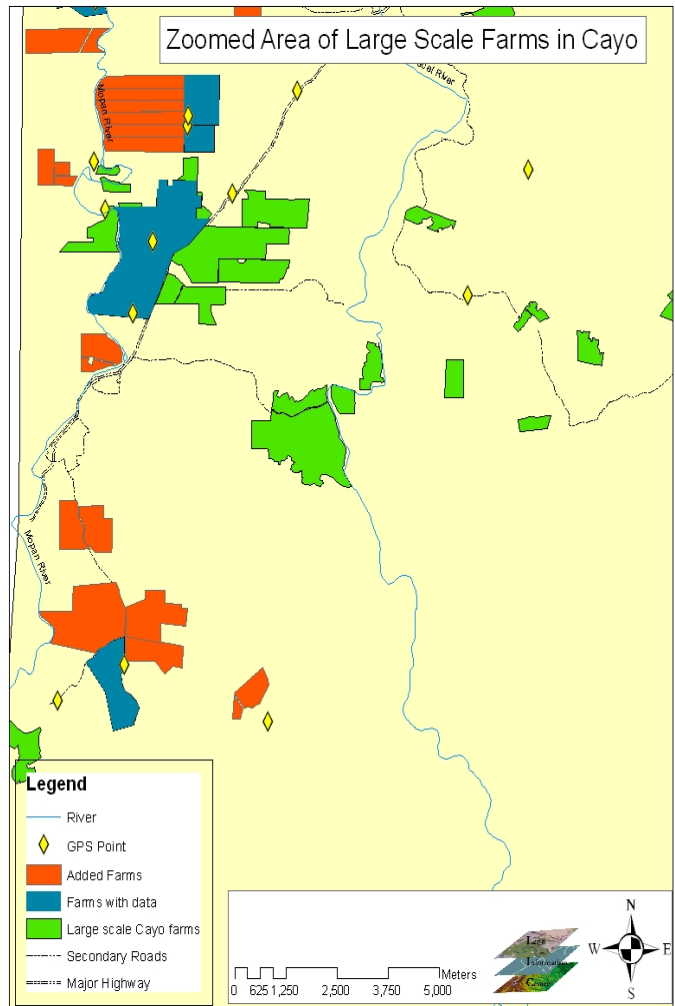
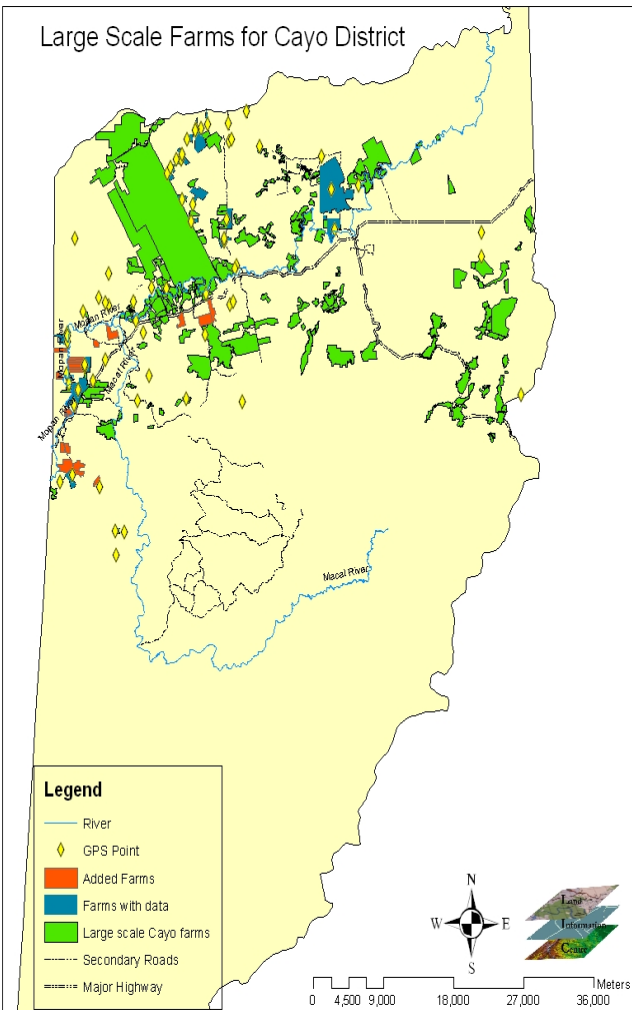
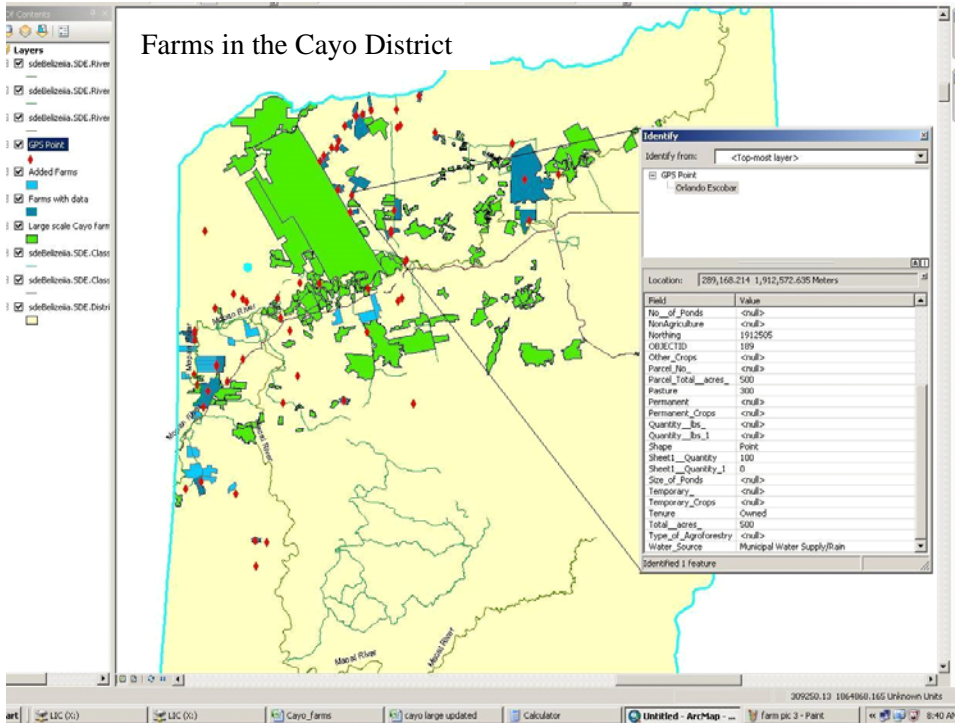
Include in the report or as attachment in .jpg format

Maps and presentations are attached.

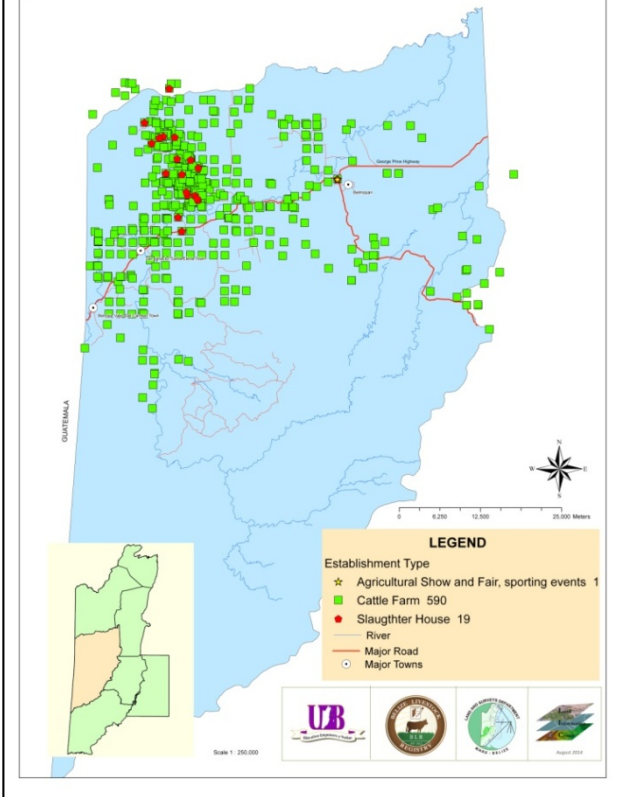
---

*For more information about the GSDI or to subscribe to the GSDI News List, please see <http://gsdi.org>. For questions about this report, please contact [grants@gsdi.org](mailto:grants@gsdi.org).*

# ATTACHMENTS (MAPS)



### Distribution of Cattle Establishments in the Cayo District



**Cayo\_cattle\_final\_map - ArcMap**

File Edit View Bookmarks Insert Selection Geoprocessing Customize Windows Help

1:500,000

Geostatistical Analyst Drawing Aerial

Editor

**Table of Contents**

- Layers
  - Major Towns
  - Final\_Cayo\_Cattle Establishment
    - Agricultural Sh
    - Cattle Farm 59
    - Slaughter Hou
  - Cayo\_Rivers Category
  - River
  - Cayo\_roads CLASS
  - Major Road
  - 2
  - CayoDistrictBnd

**Identify**

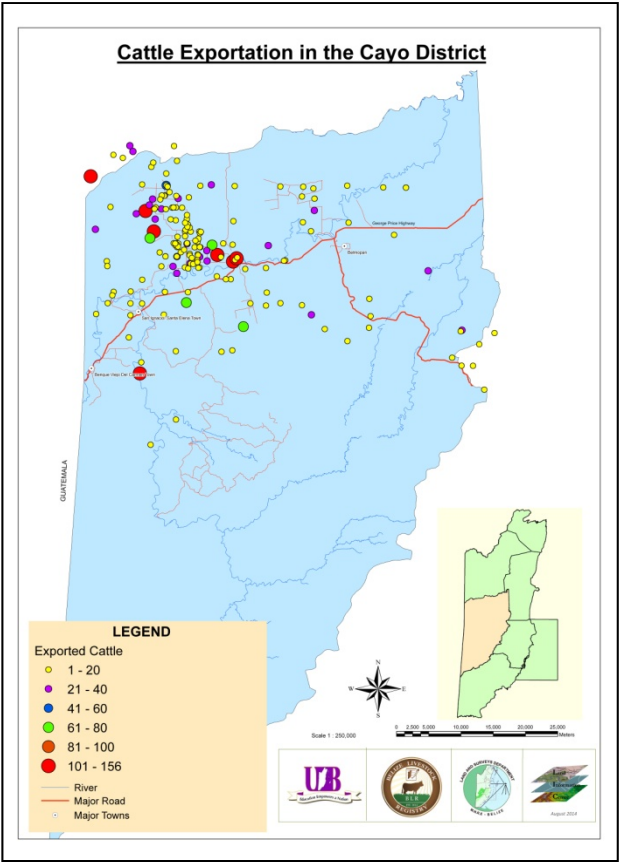
Identify from: <Top-most layer>

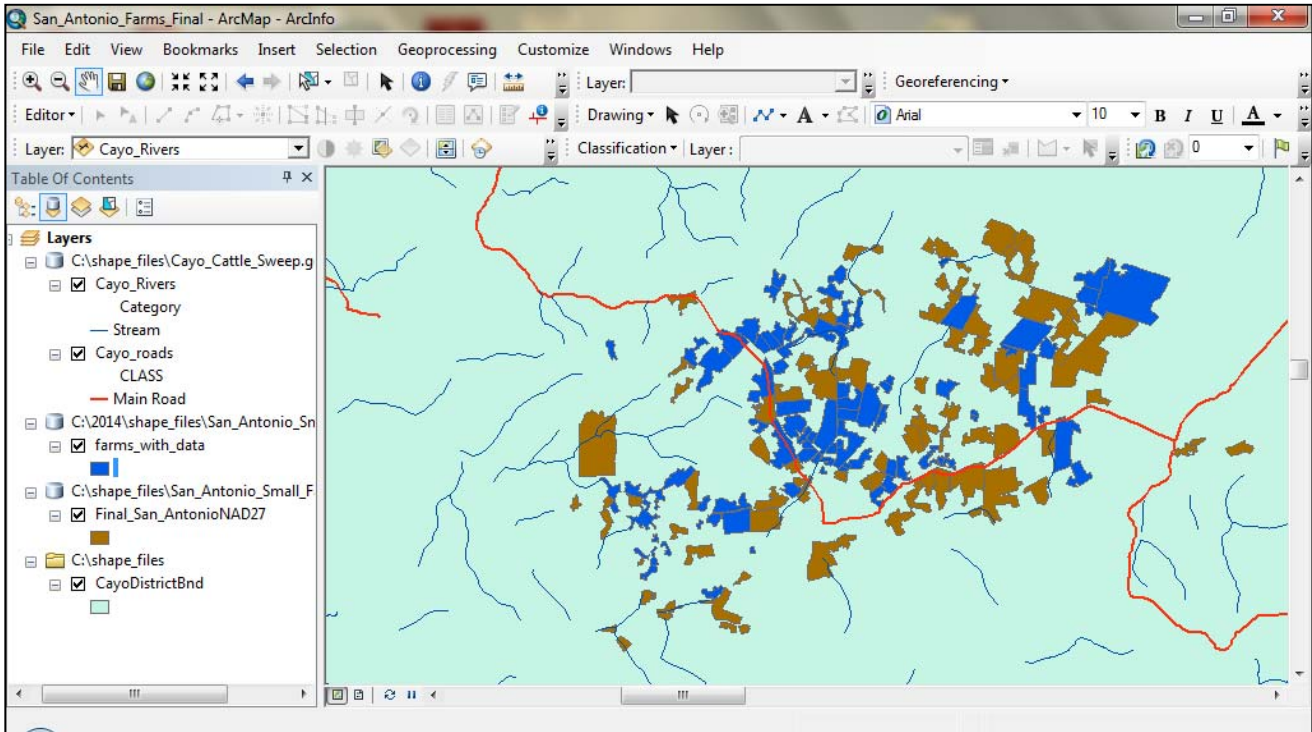
Location: 304,969.504 1,915,800.050 Meters

Field	Value
Comments	<null>
Company_Representative	Alejandra Vasquez
Consumed_Unactive	<null>
Damaged_Unactives	1
Date	41528
Death_Unactive	<null>
Defective_Unactives	<null>
District	Cayo
Email	<null>
Establishment_Location	Valley of Peace
Establishment_Address	Valley of Peace
Establishment_Code	0840453000003
Establishment_Name	Alejandra Vasquez
Establishment_Type	Cattle Farm
Exported_Unactives	<null>
Farm_Size_Acres	40.00 Acres
Farmer_Address	Valley of Peace
Farmer_Code	900001021
Farmer_Gender	M
Farmer_Name	Vasquez, Alejandra
Farmers_wit_Morethanone_Farm_Actives	<null>
Farmers_wit_Morethanone_Farm_Unactives	<null>
Females_Cattle	9
GPS_Easting	-88°50'6.47"
GPS_Easting_DEC	-88.835131
GPS_Northing	17°19'10.7"
GPS_Northing_DEC	17.319639
Irrigated_Pasture_Acreage	0
Live_Cattle	12
Mailing_Address	Valley of Peace
Male_Cattle	3
Notable_equipment_or_Machinery	<null>
Notable_infrastructure	<null>
OBJECTID	581
Shape	Point
Status	1
Tagger_or_person_responsible	Jose Marin
Telephone	669-3515 / 663-6495
Tenure	Lease
Theft_Unactive	<null>
Unactive_Cattle	1
Undefined_Unactives	<null>

**Data placed as attributes to cattle farm points**

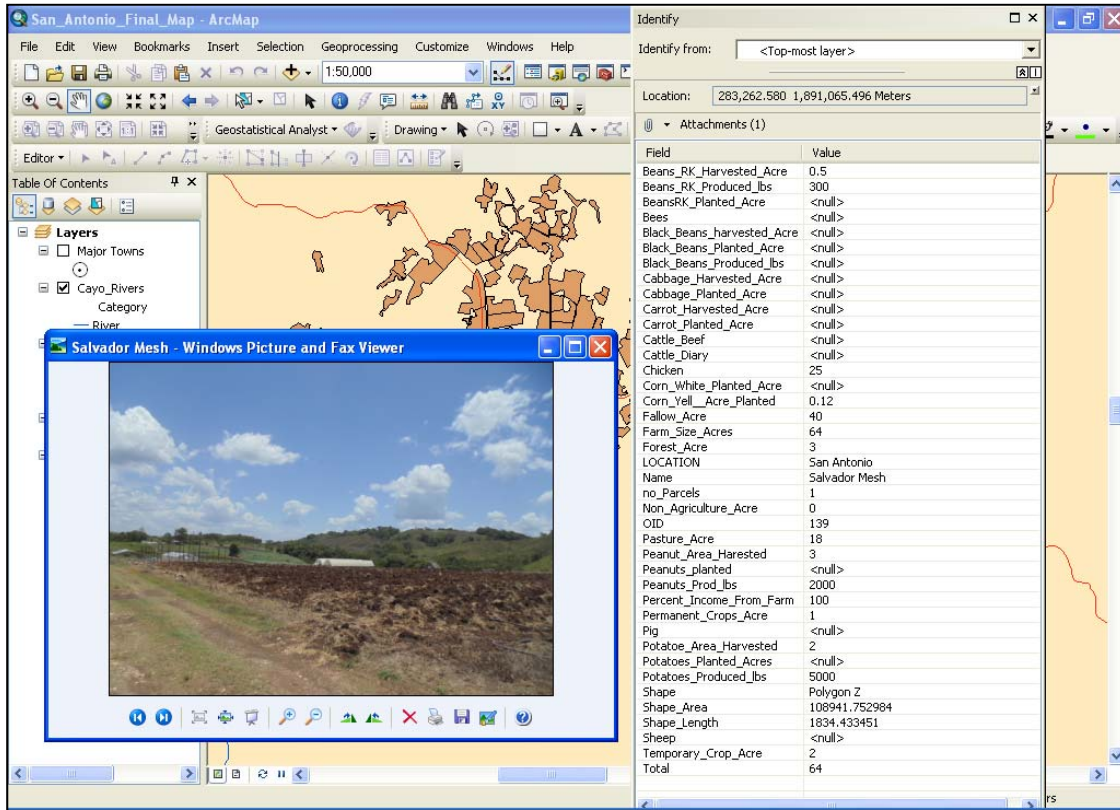
### Cattle Exportation in the Cayo District



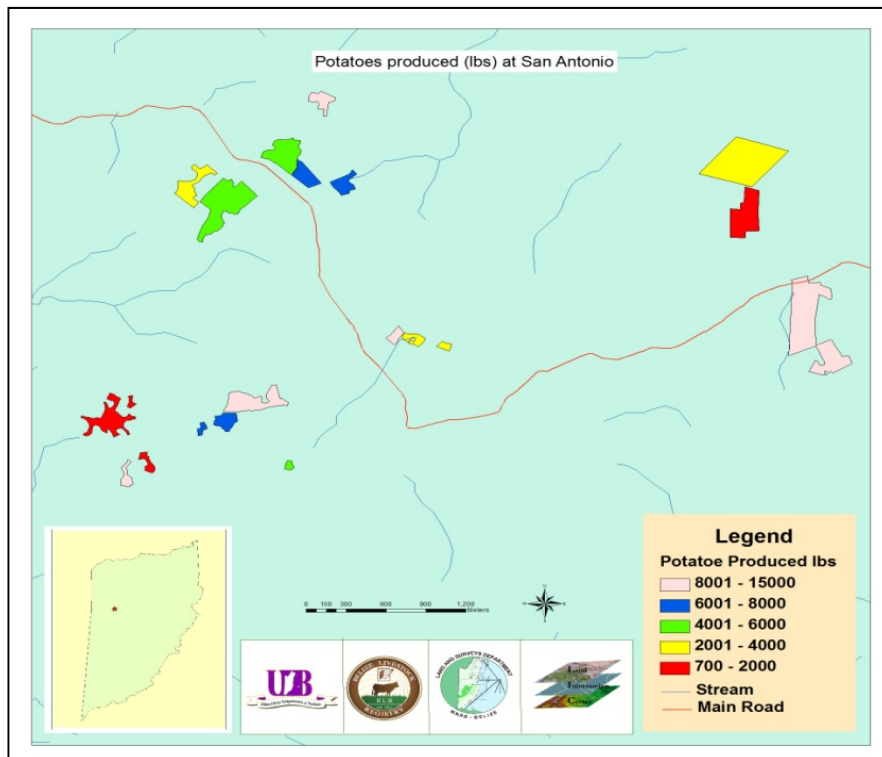


**Cayo Farms with both farm and crop data**

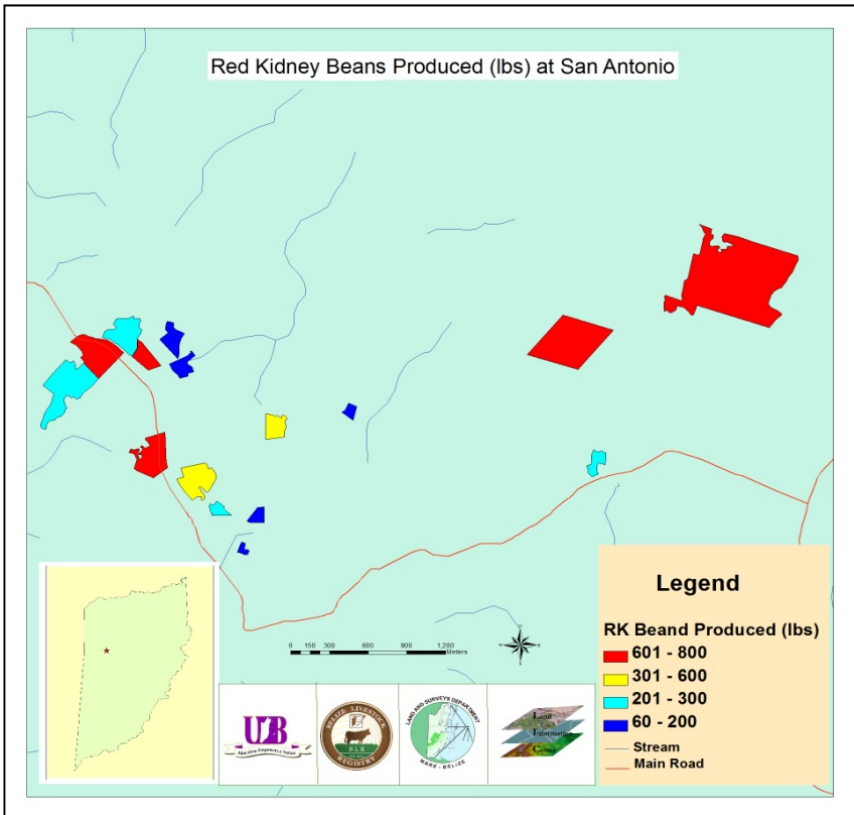
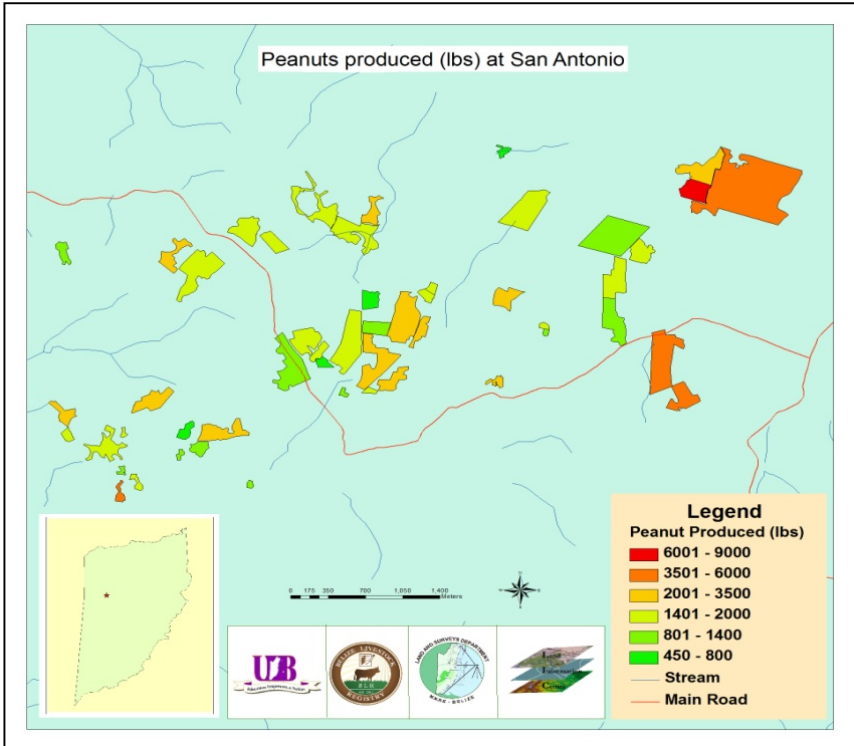


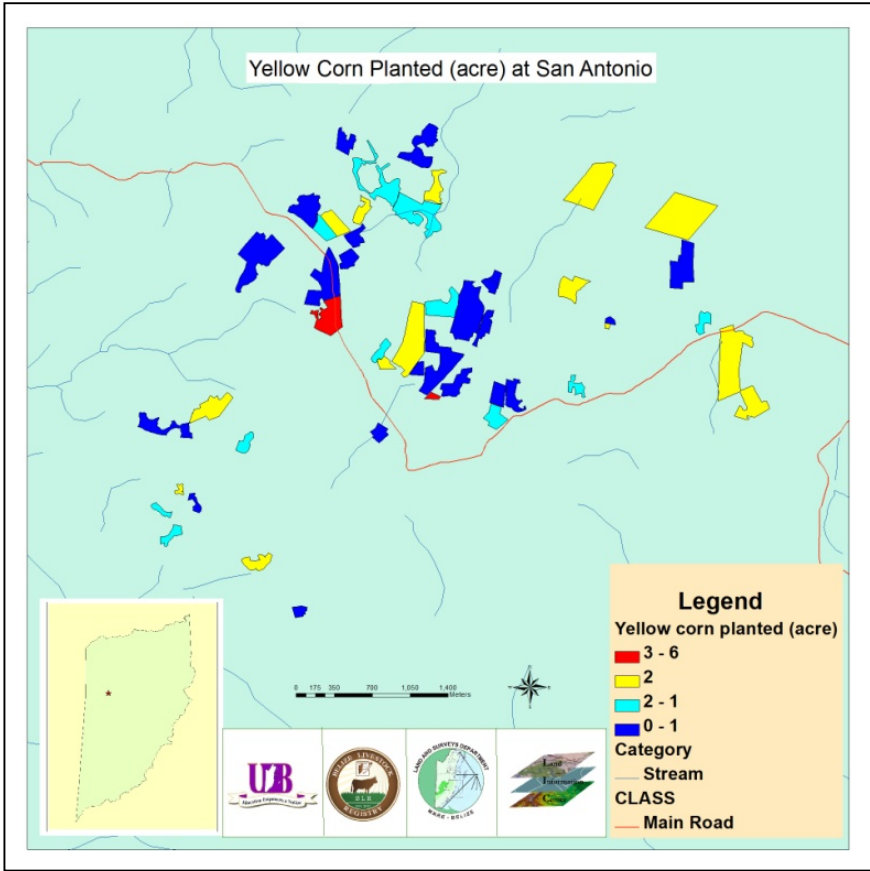


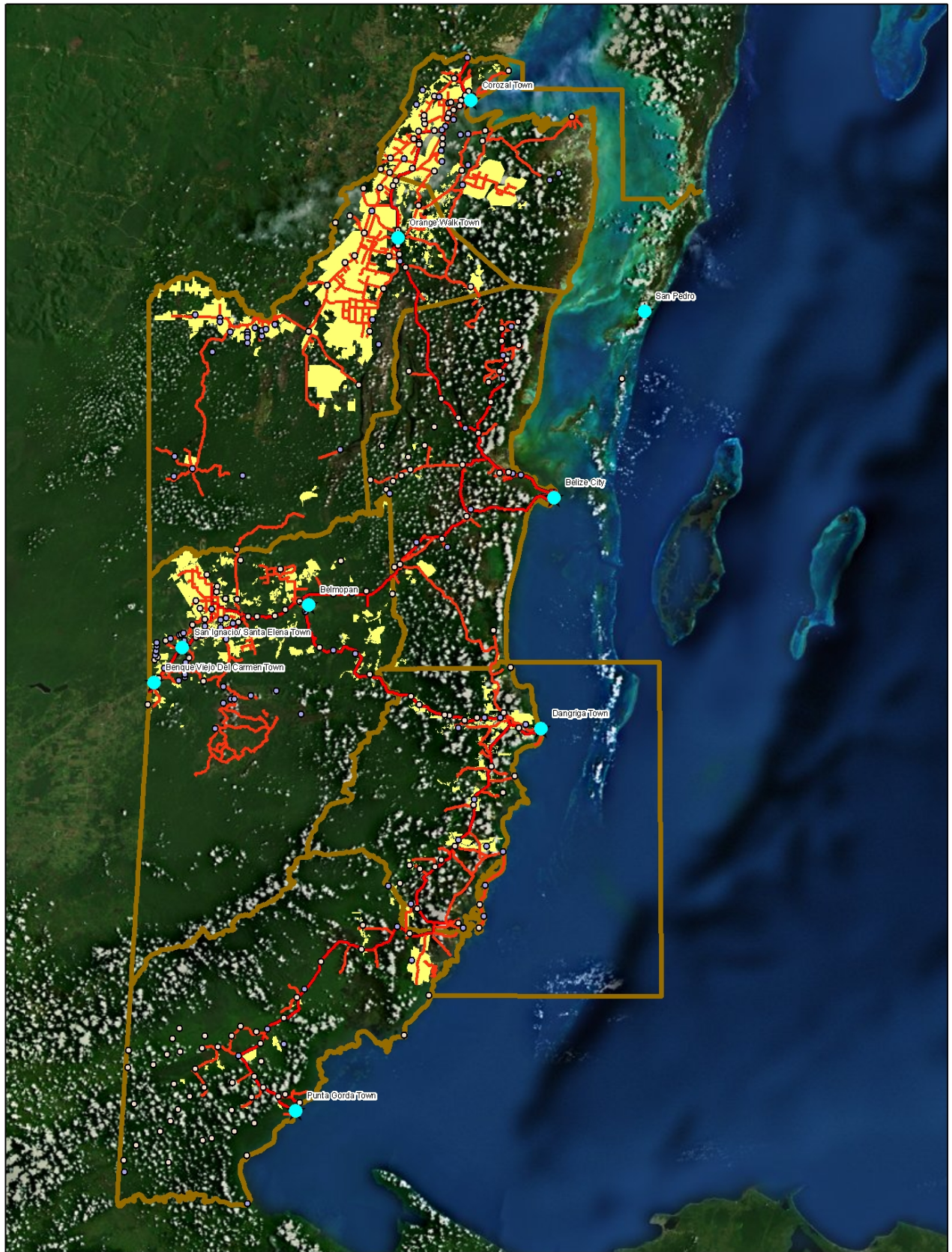
Crop, farm and pictures of farms were integrated into the geodatabase











**Belize Farm Coverage**